

## Product datasheet for **RC225747**

### alpha 2 Glycine Receptor (GLRA2) (NM\_001118886) Human Tagged ORF Clone

#### Product data:

Product Type:	Expression Plasmids
Product Name:	alpha 2 Glycine Receptor (GLRA2) (NM_001118886) Human Tagged ORF Clone
Tag:	Myc-DDK
Symbol:	alpha 2 Glycine Receptor
Synonyms:	GLR
Mammalian Cell Selection:	Neomycin
Vector:	pCMV6-Entry (PS100001)
E. coli Selection:	Kanamycin (25 ug/mL)



[View online »](#)

**ORF Nucleotide Sequence:**

>RC225747 ORF sequence  
 Red=Cloning site Blue=ORF Green=Tags(s)

TTTTGTAATACGACTCACTATAGGGCGGCCGGAATTCGTCGACTGGATCCGGTACCGAGGAGATCTGCC  
 GCC**CGCATCGCC**

ATGAACCGGCAGCTAGTGAACATTTTGACAGCCTTGTTCATTTTCTTAGAGACAAACCCTTCAGGA  
 CGGCTTTCTGCAAAGACCATGACTCCAGGCTGGAAAACAACCTTACAGACCCTATCTCCTTCAGATTT  
 CTTGGACAAGTTAATGGGAAGGACATCAGGATATGATGCAAGAATCAGGCCAAATTTAAAGGTCCTCCA  
 GTAACCGTTACTTGCAATATTTTATCAACAGTTTGGATCAGTCACAGAAACGACCATGGACTACCGAG  
 TGAATATTTTCTGAGACAACAGTGAATGATTCACGGCTGGCGTACAGTGAGTACCCAGATGACTCCCT  
 GGACTTGGACCCATCCATGCTAGACTCCATTTGAAAACAGATTTGTTCTTTGCCAATGAGAAGGGTGCC  
 AACTTCCACGATGCACCACTGACAACAATTGCTACGGATTTGAAAAATGGCAAAGTCTCTACAGTA  
 TCAGACTCACCTTGACCTTATCCTGTCCATGGACTTGAAGAATTTCCGATGGATGCCAGACCTGTAC  
 AATGCAGCTGGAGAGTTTGGGTACACGATGAATGACCTGATATTTGAGTGGTTAAGTGATGGTCCAGTG  
 CAAGTTGCTGAAGGATTGACCCTGCCCCAGTTTATTTGAAAGAAGAGAAGGAAGTGGCTACTGTACAA  
 AGCACTACAACACTGAAAGTTTACCTGCATTGAGGTCAAGTTTCATCTGGAACGCCAAATGGGATATTA  
 TTTGATCCAGATGACATCCCAAGCCTGCTTATAGTAATTTTGCCTGGGTTTCCTTTGGATAAATATG  
 GATGCAGCCCCTGCCAGGTCGCACTGGGCATCACCACAGTCTAACGATGACCACCCAGAGTTCAGGCT  
 CCAGGGCATCTCTGCCAAAGTCTCCTATGTAAAAGCGATTGACATCTGGATGGCGGTGTGCCTTCTGTT  
 TGTGTTTGTGCTTACTGGAATACGCAGCGGTGAACCTCGTCTCCAGGCAACACAAGGAGTTCCTGCGC  
 CTCCGAAGAAGACAGAAGAGGCAGAATAAGGAAGAAGACGTTACTCGTAAAAGTCGTTTAAATTTAGCG  
 GTTATGGGATGGTCACTGCCTCCAAGTGAAGATGGAACAGCTGTCAAGGCCACACCTGCCAACCCACT  
 CCCACAACCGCCAAAAGATGGAGATGCTATCAAGAAGAAGTTTGTGGACCGGGCAAAAAGGATTGACACG  
 ATATCTCGAGCTGCCTTCCATTGGCCTTCTCATTTCACATCTTTACTGGATCACATACAAGATCA  
 TTCGGCATGAAGATGTCCACAAGAAA

**ACGCGT**ACGCGGCCGCTCGAGCAGAACTCATCTCAGAAGAGGATCTGGCAGCAAATGATATCCTGGATT  
 ACAAGGATGACGACGATAAGGTTTAA

**Protein Sequence:**

>RC225747 protein sequence  
 Red=Cloning site Green=Tags(s)

MNRQLVNILTALFAFFLETNHFRTAFCKDHSRSGKQPSQTLSPSDFLDKLMGRTSGYDARIRPNFKGPP  
 VNVTCNIFINSGSVTETMDYRVNIFLRQWNSRLAYSEYPDDSLDLPSMLDSIWKPDFFANEKGA  
 NFHDVTTDNKLLRISKNGKVLYSIRLTLTLSCPMDLKNFPMQVQCTMQLESFGYTMNDLIFEWLSGDPV  
 QVAEGLTLPQFILKEEKELGYCTKHYNTGKFTCIEVKFHLERQMGYYLIQMIYPSLLIVILSWVSFWINM  
 DAAPARVALGITTVLMTTQSSGSRASLPKVSIVYKAIIDIWMAVCLLFVFAALLEYAANFVSRQHKFLR  
 LRRRQKRQNKEDVTRESRFNFSGYGMGHCLQVKDGTAVKATPANPLPQPPKDGDAIKKKFVDRAKRIDT  
 ISRAAFPLAFLIFNIFYWITYKIIIRHEDVHKK

**TR**TRPLEQKLISEEDLAANDILDYKDDDDKV

**Chromatograms:**

[https://cdn.origene.com/chromatograms/mk6134\\_c09.zip](https://cdn.origene.com/chromatograms/mk6134_c09.zip)

**Restriction Sites:**

Sgfl-Mlul

**Cloning Scheme:**


**ACCN:** NM\_001118886

**ORF Size:** 1356 bp

**OTI Disclaimer:** The molecular sequence of this clone aligns with the gene accession number as a point of reference only. However, individual transcript sequences of the same gene can differ through naturally occurring variations (e.g. polymorphisms), each with its own valid existence. This clone is substantially in agreement with the reference, but a complete review of all prevailing variants is recommended prior to use. [More info](#)

**OTI Annotation:** This clone was engineered to express the complete ORF with an expression tag. Expression varies depending on the nature of the gene.

**Components:** The ORF clone is ion-exchange column purified and shipped in a 2D barcoded Matrix tube containing 10ug of transfection-ready, dried plasmid DNA (reconstitute with 100 ul of water).

**Reconstitution Method:**

1. Centrifuge at 5,000xg for 5min.
2. Carefully open the tube and add 100ul of sterile water to dissolve the DNA.
3. Close the tube and incubate for 10 minutes at room temperature.
4. Briefly vortex the tube and then do a quick spin (less than 5000xg) to concentrate the liquid at the bottom.
5. Store the suspended plasmid at -20°C. The DNA is stable for at least one year from date of shipping when stored at -20°C.

**RefSeq Size:** 3458 bp

**RefSeq ORF:** 1359 bp

**Locus ID:** 2742

**UniProt ID:** [P23416](#)

**Cytogenetics:** Xp22.2

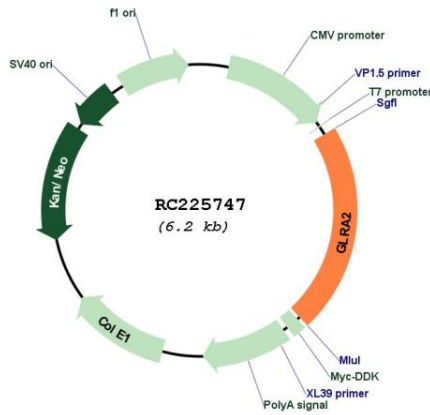
**Protein Families:** Druggable Genome, Ion Channels: Cys-loop Receptors, Transmembrane

**Protein Pathways:** Neuroactive ligand-receptor interaction

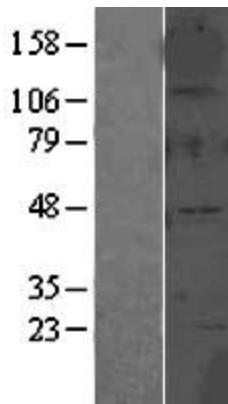
**MW:** 52 kDa

**Gene Summary:** The glycine receptor consists of two subunits, alpha and beta, and acts as a pentamer. The protein encoded by this gene is an alpha subunit and can bind strychnine. Several transcript variants encoding different isoforms have been found for this gene.[provided by RefSeq, Jan 2010]

**Product images:**



Circular map for RC225747



Western blot validation of overexpression lysate (Cat# [LY426528]) using anti-DDK antibody (Cat# [TA50011-100]). Left: Cell lysates from untransfected HEK293T cells; Right: Cell lysates from HEK293T cells transfected with RC225747 using transfection reagent MegaTran 2.0 (Cat# [TT210002]).