

## Product datasheet for **RC225744**

### CRPPA (NM\_001101426) Human Tagged ORF Clone

#### Product data:

Product Type:	Expression Plasmids
Product Name:	CRPPA (NM_001101426) Human Tagged ORF Clone
Tag:	Myc-DDK
Symbol:	CRPPA
Synonyms:	hISPD; ISPD; LGMDR20; MDDGA7; MDDGC7; Nip
Mammalian Cell Selection:	Neomycin
Vector:	pCMV6-Entry (PS100001)
E. coli Selection:	Kanamycin (25 ug/mL)



[View online »](#)

**ORF Nucleotide Sequence:**

>RC225744 representing NM\_001101426  
 Red=Cloning site Blue=ORF Green=Tags(s)

TTTTGTAATACGACTCACTATAGGGCGGCCGGGAATTCGTCGACTGGATCCGGTACCGAGGAGATCTGCC  
 GCC**CGCATCGCC**

ATGGAGGCCGGCCGCCGGCCAGCGCCAGGCCGGCGGAGCCGGTCTTGCCTGAGTGGTACGCGCGCC  
 CGGACCACACGGCTTCCGCCTCCCTGCAGAGCGTGGCCGGGACCGAGCCGGGCGCCACCCGCAAGCCGT  
 GGCAGCTGTGTTGCCTGCCGGGGGTGCGGGGAGAGGATGGGGTCCCCACCCCAAGCAATTCTGCCCC  
 ATCCTGGAGAGCCGCTCATCAGCTACACCCTACAGGCCCTGGAGAGATGTTGGATAAAGGACATTG  
 TTGTGGCAGTAACTGGAGAGAACATGGAAGTAATGAAAAGTATTATTCAGAAGTATCAGCATAAACGCAT  
 CTCCTGGTGAAGCTGGAGTGACCCGCCACAGGTCAATTTTCAATGGACTAAAAGCACTGGCAGAAGAT  
 CAGATCAACTCTAACTCTAAGCCAGAAGTAGTGATTATCCATGATGCTGTGAGACCATTGTTGAGG  
 AAGGTGTCCTTCTAAAGTTGTACAGCTGCTAAGGAACACGGGGCAGCAGGAGCCATTCGACCTTTGT  
 ATCTACTGTCGTCAGTCCATCTGCTGATGGTTGCTTAGACTACTGCTAGAACGTGCCAGACACAGAGCA  
 AGTGAAATGCCCAAGCTTTTCTATTTGATGTGATTTATGAAGCATATCAGCAGTGTAGTACTATGACT  
 TGGAAATTTGAACTGAGTGTTTGAATTTGGCCCTAAAATACTGTTGCACTAAAGCCAAACTGTAGAAGG  
 ATCACCTGACCTCTGGAAGGTGACCTACAAACGAGATCTCTATGCGGCTGAATCGATTATTAAGGAGAGA  
 ATTTCCCAAGAGATTTGTGTAGTTATGGATACAGAAGAAGATAACAAACATGTAGGTCATCTTCTTGAAG  
 AAGTGCTGAAAAGTGAATTAATCATGTAAAAGTCACATCTGAGGCTCTGGGTCATGCTGGCAGACATCT  
 TCAGCAAATCATCTTAGATCAATGCTACAATTTTGTGTTGTTGATGTTACAACCTCTGATTTTCAAGAA  
 ACCCAGAAGTTACTGAGCATGCTGAAGAGAGTAGTCTTTGCATTTTATCCTGTTGTTGTTGTTTTCAG  
 TTCATTTTCTTGATTTTAAATTAGTACCTCCAGTCAGAAAATGGAAAACCTAATGCAGATTAGAGAAT  
 TGCAAAGGAAGTAAAAGAAAGAAATATTTTGTATATGGGCTTCTCATATCTTACCCACAGGATGATCAG  
 AAGCTACAGGAGAGTTTAAAGCAAGGTGCTATCATTATTGCTTCATTAATCAAGGAAAGAAATTCTGGAC  
 TCATTGTCAGCTTCTGATAGCA

**ACGCGT**ACGCGGCCGCTCGAGCAGAACTCATCTCAGAAGAGGATCTGGCAGCAAATGATATCCTGGATT  
 ACAAGGATGACGACGATAAGGTTTAA

**Protein Sequence:**

>RC225744 representing NM\_001101426  
 Red=Cloning site Green=Tags(s)

MEAGPPGSARPAEPGPCLSGQRGADHTASASLQSVAGTEPGRHPQAVAAVLPAAGCGERMVPTPKQFCP  
 ILERPLISYTLQALERVWIKDIVVAVTGENMEVMKSI IQKYQHKRISLVEAGVTRHRSIFNGLKALAED  
 QINSKLSKPEVVI IHDAVRPFVEEGVLLKVVTAAKEHGAAGAIRPLVSTVVSPSADGCLDYSLERARHRA  
 SEMPQAFLLFDVI YEAYQQCSYDLEFGTECLQLALKYCCTKAKLVEGSPDLWKVTKRDL YAAESI IKER  
 ISQEICVMDTEEDNKHVGHLL EEV LKSELNHVKVTSEALGHAGRHLQQI IILDQCYNFVCVNTTSDFQE  
 TQKLLSML EESSLCILYPVVVSVHFLDFKLVPPSQMENLMQIREFAKEVKERNILLYGLLISYPQDDQ  
 KLQESLRQGAI I IASLIKERN SGLIGQLLIA

**TR**TRPLEQKLISEEDLAANDILDYKDDDDKV

**Chromatograms:**

[https://cdn.origene.com/chromatograms/mk8035\\_b03.zip](https://cdn.origene.com/chromatograms/mk8035_b03.zip)

**Restriction Sites:**

Sgfl-Mlul

**Cloning Scheme:**


**ACCN:** NM\_001101426

**ORF Size:** 1353 bp

**OTI Disclaimer:** The molecular sequence of this clone aligns with the gene accession number as a point of reference only. However, individual transcript sequences of the same gene can differ through naturally occurring variations (e.g. polymorphisms), each with its own valid existence. This clone is substantially in agreement with the reference, but a complete review of all prevailing variants is recommended prior to use. [More info](#)

**OTI Annotation:** This clone was engineered to express the complete ORF with an expression tag. Expression varies depending on the nature of the gene.

**Components:** The ORF clone is ion-exchange column purified and shipped in a 2D barcoded Matrix tube containing 10ug of transfection-ready, dried plasmid DNA (reconstitute with 100 ul of water).

**Reconstitution Method:**

1. Centrifuge at 5,000xg for 5min.
2. Carefully open the tube and add 100ul of sterile water to dissolve the DNA.
3. Close the tube and incubate for 10 minutes at room temperature.
4. Briefly vortex the tube and then do a quick spin (less than 5000xg) to concentrate the liquid at the bottom.
5. Store the suspended plasmid at -20°C. The DNA is stable for at least one year from date of shipping when stored at -20°C.

**RefSeq:** [NM\\_001101426.4](#)

**RefSeq ORF:** 1356 bp

**Locus ID:** 729920

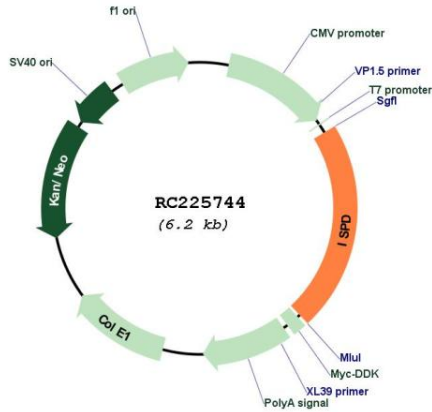
**UniProt ID:** [A4D126](#)

**Cytogenetics:** 7p21.2

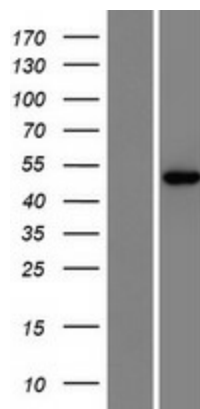
**MW:** 49.7 kDa

**Gene Summary:**

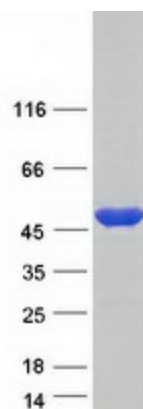
This gene encodes a 2-C-methyl-D-erythritol 4-phosphate cytidyltransferase-like protein. Mutations in this gene are the cause of Walker-Warburg syndrome. Alternate splicing results in multiple transcript variants. [provided by RefSeq, May 2012]

**Product images:**


Circular map for RC225744



Western blot validation of overexpression lysate (Cat# [LY426161]) using anti-DDK antibody (Cat# [TA50011-100]). Left: Cell lysates from untransfected HEK293T cells; Right: Cell lysates from HEK293T cells transfected with RC225744 using transfection reagent MegaTran 2.0 (Cat# [TT210002]).



Coomassie blue staining of purified CRPPA protein (Cat# [TP325744]). The protein was produced from HEK293T cells transfected with CRPPA cDNA clone (Cat# RC225744) using MegaTran 2.0 (Cat# [TT210002]).