

Product datasheet for **RC225741**

C9orf61 (FAM189A2) (NM_001127608) Human Tagged ORF Clone

Product data:

Product Type:	Expression Plasmids
Product Name:	C9orf61 (FAM189A2) (NM_001127608) Human Tagged ORF Clone
Tag:	Myc-DDK
Symbol:	C9orf61
Synonyms:	C9orf61; ENTREP; X123
Mammalian Cell Selection:	Neomycin
Vector:	pCMV6-Entry (PS100001)
E. coli Selection:	Kanamycin (25 ug/mL)



[View online »](#)

ORF Nucleotide Sequence:

>RC225741 ORF sequence
 Red=Cloning site Blue=ORF Green=Tags(s)

TTTTGTAATACGACTCACTATAGGGCGGCCGGAATTCGTCGACTGGATCCGGTACCGAGGAGATCTGCC
 GCC**CGCATCGCC**

ATGATACTCCTGGTAAACCTCTTTGTGCTGCTCTCTGTGGTTTGTGTCCTTAAATCTAGCTGGATTTA
 TCCTAGGCTGCCAAGGGGCCAGTTTGTGTCCAGCGTGCCAGGTGTGATCTGGTGGACTTAGGTGAAGG
 CAAGATTTGCTTCTGTTGTGAAGAATTTCAACCAGCCAAGTGCACAGACAAGAAAATGCCTTGAAACT
 TTTCCGGTTCAGCCCTGTAGTGTGTTACCTTACTTAAGAAAGTCTCTTTGCCCTGTGTGCCTTGA
 ATGCCCTGACCACCCTGTGCTTGGTGGCCGCTGCCCTCCGCTACCTCCAGATATTCGCAACCAGGAG
 ATCCTGCATCGATGAATCCAGATTTCTGCTGAAGAAGCGGAGGATCATGGACGCATCCCCGACCCTGAT
 GATTTTGTGCCGCTGTGCCTCCCTTCTATTTGCCACGTTTACTCGTGCACACCCCGGATGAACC
 GCAGGATGGTTGGTCTGATGTTATCCCTGCCACACATCTACGGAGCTCGAATCAAAGGTGTGGAAGT
 GTTCTGTCTCTGGATCCCCCGCCCATATGAAGCTGTGGTGTGAGCCAGATGGACCAGGAGCAGGGATCT
 TCATCCAAATGTGAGAAGGATCAGAAGCTGTGTGATCCATTGGATCTGGGCTGCACACAAGTACTC
 AAGATGGGGACATTCTAACATACCTGCCGAAGAAAATGCATCCACCTCAACTCCAGTTCAACCCTGGT
 GCGTCCTATCAGAAGCCGGAGAGCCCTCCACCTTGAGGACCAGGTCAAGAGTGACCTGTGCTCCAT
 CCTTCTGAGGAGAGAGCTGCCCCAGTGTGCTGAGTGTGAAGCTGCAACACAGACTGAAAGGAGACTGGATC
 TGGCTGCAGTGACTCTGAGGAGAGGCTTGTAGATCTAGAGCTTCGCGATGCAGACCCGCGTCTTTGATAGA
 TTACAAATCCTACATGGACCAAGCTGCTGGTGGCGAGGTTCTGGAGCAGTCTCTTGTACCATGACC
 CCAGACATCCATGAACTGTAGAAAACATTAATCTGTTTTGAAATCTGATGAGGAGCACATGGAGGAAG
 CCATCACAAGTCCAGTTTTCTAGAACAGATAATGGCCCATTCAGCCAGCACATCCAGGGCCACAA
 GCTGCCCTCGCGGAGACAGCCTGGCCTGTGCACCTCCAGAGCTGCGGGACCTTCACACCTTCACACCA
 GCGGGGAGGCCCGAGCCGAGAGGAGGCCCGCGAGTGGAGGCTGAGCGCCACACAGCCTCATTGGGG
 TCATCCGAGAGACTGTCTG

ACGCGTACGCGGCCGCTCGAGCAGAACTCATCTCAGAAGAGGATCTGGCAGCAAATGATATCCTGGATT
 ACAAGGATGACGACGATAAGGTTTAA

Protein Sequence:

>RC225741 protein sequence
 Red=Cloning site Green=Tags(s)

MILLVNLVLLSVVCLLNLVLAGFILGCQGAQFVSSVPRCDLVDLGEGKICFCEEFQPAKCTDKENALKL
 FPVQPCSAVHLLKLVFALCALNALLTTVCLVAAALRYLQIFATRRSCIDESQISAEAEADHGRIPDPD
 DFVPPVPPPSYFATFYSTPRMNRMMVGPDIPLPHIYGARIKGVVEVFCPLDPPPPYEAVVSQMDQEQGS
 SFQMSEGSEAAVIPLDLGCTQVTQDGDIPNIPAEENASTSPSSTLVRPIRSRRALPPLRTRSKSDPVLH
 PSEERAAPVLSCEAATQTERRLDLAAVTLRRGLRSRASRCRPSRLIDYKSYMDTKLLVARFLEQSSCTMT
 PDIELHVENIKSVLKSDEEHMEEAITSASFLEQIMAPLQPSTSRRAKLPSSRRQPLLHLQSCGDLHTFTP
 AGRPRAERRRRVEAERPHSLIGVIRETVL

TRTRPLEQKLISEEDLAANDILDYKDDDDKV

Chromatograms:

https://cdn.origene.com/chromatograms/mk6461_c12.zip

Restriction Sites:

Sgfl-MluI

Cloning Scheme:


ACCN: NM_001127608

ORF Size: 1350 bp

OTI Disclaimer: The molecular sequence of this clone aligns with the gene accession number as a point of reference only. However, individual transcript sequences of the same gene can differ through naturally occurring variations (e.g. polymorphisms), each with its own valid existence. This clone is substantially in agreement with the reference, but a complete review of all prevailing variants is recommended prior to use. [More info](#)

OTI Annotation: This clone was engineered to express the complete ORF with an expression tag. Expression varies depending on the nature of the gene.

Components: The ORF clone is ion-exchange column purified and shipped in a 2D barcoded Matrix tube containing 10ug of transfection-ready, dried plasmid DNA (reconstitute with 100 ul of water).

Reconstitution Method:

1. Centrifuge at 5,000xg for 5min.
2. Carefully open the tube and add 100ul of sterile water to dissolve the DNA.
3. Close the tube and incubate for 10 minutes at room temperature.
4. Briefly vortex the tube and then do a quick spin (less than 5000xg) to concentrate the liquid at the bottom.
5. Store the suspended plasmid at -20°C. The DNA is stable for at least one year from date of shipping when stored at -20°C.

RefSeq: [NM_001127608.2](#)

RefSeq Size: 2107 bp

RefSeq ORF: 1353 bp

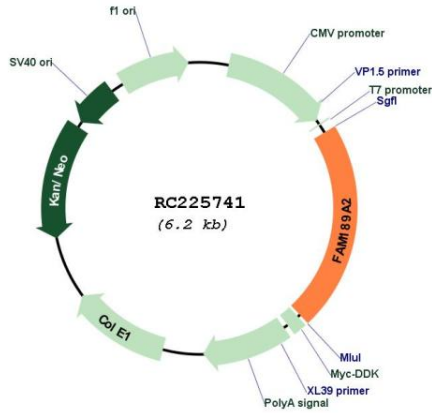
Locus ID: 9413

UniProt ID: [Q15884](#)

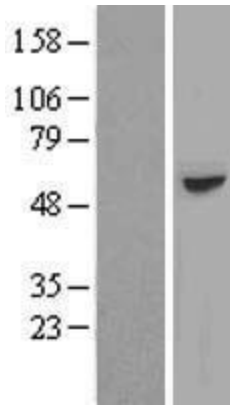
Cytogenetics: 9q21.12

Protein Families: Transmembrane
 MW: 49.7 kDa

Product images:



Circular map for RC225741



Western blot validation of overexpression lysate (Cat# [LY426821]) using anti-DDK antibody (Cat# [TA50011-100]). Left: Cell lysates from untransfected HEK293T cells; Right: Cell lysates from HEK293T cells transfected with RC225741 using transfection reagent MegaTran 2.0 (Cat# [TT210002]).