

Product datasheet for **RC225731**

SLC14A1 (NM_001128588) Human Tagged ORF Clone

Product data:

Product Type:	Expression Plasmids
Product Name:	SLC14A1 (NM_001128588) Human Tagged ORF Clone
Tag:	Myc-DDK
Symbol:	SLC14A1
Synonyms:	HsT1341; HUT11; JK; Jk(b); RACH1; RACH2; UT-B1; UT1; UTE
Mammalian Cell Selection:	Neomycin
Vector:	pCMV6-Entry (PS100001)
E. coli Selection:	Kanamycin (25 ug/mL)



[View online »](#)

ORF Nucleotide Sequence:

>RC225731 representing NM_001128588
 Red=Cloning site Blue=ORF Green=Tags(s)

TTTTGTAATACGACTCACTATAGGGCGGCCGGAATTCGTCGACTGGATCCGGTACCGAGGAGATCTGCC
 GCC**CGCATCGCC**

ATGAATGGACGGTCTTTGATTGGCGGCGCTGGTACGCCCGTCATGGTCCTGTTTGAAGGACCCCTTTG
 GAACTAAAGCTGGTGACGCAGCGCAGAGGAATCGCCCGCTAAGCTTGCCCTGGCAGATGGGTGCA
 GGAACAGGAGCCAGAGGAAGAGATAGCCATGGAGGACAGCCCACTATGGTTAGAGTGGACAGCCCACT
 ATGGTTAGGGGTGAAAACCAGGTTTCGCCATGTCAAGGGAGAAGGTGCTCCCAAAGCTCTTGGCTATG
 TCACCGGTGACATGAAAGAACTTGCCAACCAGCTTAAAGACAAACCCGGTGGTGTCCAGTTCATTGACTG
 GATTCTCCGGGCATATCCAAGTGGTGTTCGTCACAACCCCGTCAGTGAATCCTGATTCTGGTAGGA
 CTTCTTGTTCAGAACCCTGGTGGGCTCTACTGGCTGGCTGGGAACAGTGGTCTCCACTCTGATGGCC
 TCTTGCTCAGCCAGGACAGTCAATAAGCATCTGGGCTCTATGGCTACAATGCCACCCTGGTGGGAGT
 ACTCATGGCTGTCTTTTCGGACAAGGGAGACTATTTCTGGTGGCTGTTACTCCCTGTATGTCTATGTCC
 ATGACTTGCCCAATTTCTCAAGTGCATTGAATCCATGCTCAGCAAATGGGACCTCCCGCTCTCACCC
 TCCCTTCAACATGGCGTTGTCAATGTACCTTTCAGCCACAGGACATTACAATCCGTTCTTTCCAGCCAA
 ACTGGTCATACCTATAACTACAGCTCCAATATCTCCTGGTCTGACCTCAGTGCCTGGAGTTGTTGAAA
 TCTATACCAGTGGGAGTTGGTCAGATCTATGGCTGTGATAATCCATGGACAGGGGGCATTCTTCTGGGAG
 CCATCCTACTCTCTCCCACTCATGTGCCTGCATGCTGCCATAGGATCATTGCTGGGCATAGCAGCGGG
 ACTCAGTCTTTCAGCCCAATTTGAGAACATCTACTTTGGACTCTGGGTTTCAACAGCTCTCTGGCTGC
 ATTGCAATGGGAGGAATGTTTCATGGCGCTCACCTGGCAAACCCACCTCCTGGCTCTTGGCTGTGCCCTGT
 TCACGGCCTATCTTGGAGTCGGCATGGCAAATTTATGGCTGAGGTTGGATTGCCAGCTTGTACCTGGCC
 CTCTGTTTGGCCACGCTATTGTTCTCATGACCACAAAAAATTCACATCTACAAGATGCCCTC
 AGTAAAGTTACTTATCCTGAAGAAAACCGCATCTTCTACCTGCAAGCCAAGAAAAGAATGGTGGAAAGCC
 CTTTG

ACGCGTACGCGGCCGCTCGAGCAGAACTCATCTCAGAAGAGGATCTGGCAGCAAATGATATCCTGGATT
 ACAAGGATGACGACGATAAGGTTTAA

Protein Sequence:

>RC225731 representing NM_001128588
 Red=Cloning site Green=Tags(s)

MNGRSLIGGAGDARHGPVWVKDPFGTKAGDAARRGIARLSLALADGSQEQEPEEEIAMEDSPTMVRVDSPT
 MVRGENQVSPCQGRRCFPKALGYVTGDMKELANQLKDKPVVLQFIDWILRGISQVVFVNNPVSGILILVG
 LLVQNPWWALTGWLTVVSTLMALLLSQDRSLIASGLYGYNATLVGVLMVAVFSDKGDYFWLLLPVCAMS
 MTCPIFSSALNSMLSKWDLPVFTLPFNALSMYLSATGHYNPFFPAKLVIPITTAAPNISWSDL SALELLK
 SIPVGVQIYGCNPNWTGGIFLGAILLSSPLMCLHAAIGSLLGIAAGLSLAPFENIYFGLWGFNSLAC
 IAMGGMFALTWQTHLLALGCALFTAYLVGVMANFMAEVLPACTWPFCLATLLFLIMTTKNSNIYKMPL
 SKVTYPEENRIFYLQAKKRMVESPL

TRTRPLEQKLISEEDLAANDILDYKDDDDKV

Chromatograms:

https://cdn.origene.com/chromatograms/mg3381_c09.zip

Restriction Sites:

Sgfl-Mlul

Cloning Scheme:


ACCN: NM_001128588

ORF Size: 1335 bp

OTI Disclaimer: Due to the inherent nature of this plasmid, standard methods to replicate additional amounts of DNA in E. coli are highly likely to result in mutations and/or rearrangements. Therefore, OriGene does not guarantee the capability to replicate this plasmid DNA. Additional amounts of DNA can be purchased from OriGene with batch-specific, full-sequence verification at a reduced cost. Please contact our customer care team at custsupport@origene.com or by calling 301.340.3188 option 3 for pricing and delivery.

The molecular sequence of this clone aligns with the gene accession number as a point of reference only. However, individual transcript sequences of the same gene can differ through naturally occurring variations (e.g. polymorphisms), each with its own valid existence. This clone is substantially in agreement with the reference, but a complete review of all prevailing variants is recommended prior to use. [More info](#)

OTI Annotation: This clone was engineered to express the complete ORF with an expression tag. Expression varies depending on the nature of the gene.

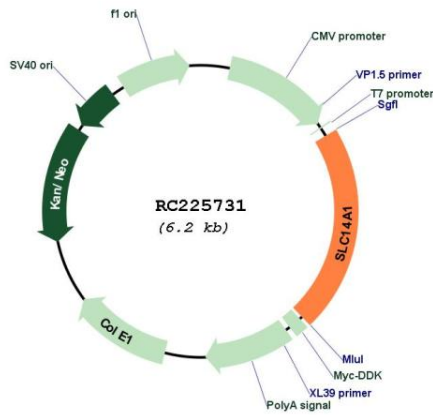
Components: The ORF clone is ion-exchange column purified and shipped in a 2D barcoded Matrix tube containing 10ug of transfection-ready, dried plasmid DNA (reconstitute with 100 ul of water).

- Reconstitution Method:**
1. Centrifuge at 5,000xg for 5min.
 2. Carefully open the tube and add 100ul of sterile water to dissolve the DNA.
 3. Close the tube and incubate for 10 minutes at room temperature.
 4. Briefly vortex the tube and then do a quick spin (less than 5000xg) to concentrate the liquid at the bottom.
 5. Store the suspended plasmid at -20°C. The DNA is stable for at least one year from date of shipping when stored at -20°C.

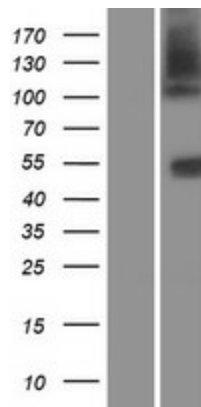
RefSeq: [NM_001128588.4](#)
 RefSeq ORF: 1338 bp
 Locus ID: 6563
 UniProt ID: [Q13336](#)
 Cytogenetics: 18q12.3
 Protein Families: Transmembrane
 MW: 48.2 kDa

Gene Summary: The protein encoded by this gene is a membrane transporter that mediates urea transport in erythrocytes. This gene forms the basis for the Kidd blood group system. [provided by RefSeq, Mar 2009]

Product images:



Circular map for RC225731



Western blot validation of overexpression lysate (Cat# [LY431384]) using anti-DDK antibody (Cat# [TA50011-100]). Left: Cell lysates from untransfected HEK293T cells; Right: Cell lysates from HEK293T cells transfected with [RC228356] using transfection reagent MegaTran 2.0 (Cat# [TT210002]).