

## Product datasheet for **RC225723**

### Endothelin B Receptor (EDNRB) (NM\_001122659) Human Tagged ORF Clone

#### Product data:

Product Type:	Expression Plasmids
Product Name:	Endothelin B Receptor (EDNRB) (NM_001122659) Human Tagged ORF Clone
Tag:	Myc-DDK
Symbol:	Endothelin B Receptor
Synonyms:	ABCDS; ET-B; ET-BR; ETB; ETB1; ETBR; ETRB; HSCR; HSCR2; WS4A
Mammalian Cell Selection:	Neomycin
Vector:	pCMV6-Entry (PS100001)
E. coli Selection:	Kanamycin (25 ug/mL)



[View online »](#)

**ORF Nucleotide Sequence:**

>RC225723 representing NM\_001122659  
 Red=Cloning site Blue=ORF Green=Tags(s)

TTTTGTAATACGACTCACTATAGGGCGGCCGGAATTCGTCGACTGGATCCGGTACCGAGGAGATCTGCC  
 GCCGCGATCGCC

ATGCAGCCGCCTCCAAGTCTGTGCGGACGCGCCCTGGTTGCGCTGTTCTTGCCCTGCGGCCTGTCGCGGA  
 TCTGGGGAGAGGAGAGAGCTTCCCGCCTGACAGGGCCACTCCGCTTTTGCAAACCGCAGAGATAATGAC  
 GCCACCCACTAAGACCTTATGGCCCAAGGGTTCCAACGCCAGTCTGGCGCGGTCTTGGCACCTGCGGAG  
 GTGCTAAAGGAGACAGGACGGCAGGATCTCCGCCACGCACCATCTCCCTCCCCGTGCCAAGGACCCA  
 TCGAGATCAAGGAGACTTCAAATACATCAACACGGTTGTGCTGCTTGTGTTCTGCTGTTGGGATCAT  
 CGGGAATCCACACTTCTGAGAATTATCTACAAGAACAAGTGCATGCGAAACGGTCCCAATATCTTGATC  
 GCCAGCTTGGCTCTGGGAGACCTGCTGCACATCGTCATTGACATCCCTATCAATGTCTACAAGCTGCTGG  
 CAGAGGACTGGCATTGGAGCTGAGATGTGAAGCTGGTGCCTTTCATACAGAAAGCCTCCGTGGGAAT  
 CACTGTGCTGAGTCTATGTGCTGAGTATTGACAGATATCGAGCTGTTGCTTCTTGGAGTGAATTA  
 GGAATTGGGGTTCCAAAATGGACAGCAGTAGAAATGTTTTGATTGGGTGGTCTCTGTGGTTCTGGCTG  
 TCCTGAAGCCATAGTTTTGATATAATTACGATGGACTACAAAGGAAGTTATCTGCGAATCTGCTTGTCT  
 TCATCCCGTTTCAAGACAGCTTTCATGCACTTTTACAAGACAGCAAAGATTGGTGGCTGTTCACTTTC  
 TATTTCTGCTTGGCATTGGCCATCACTGCATTTTTTATACACTAATGACCTGTGAAATGTTGAGAAAGA  
 AAAGTGGCATGCAGATTGCTTTAAATGATCACCTAAAGCAGAGACGGGAAGTGGCCAAAACCGTCTTTTG  
 CCTGGTCTTGTCTTGGCCCTGCTGGCTTCCCTTACCTCAGCAGGATTCTGAAGCTCACTCTTTAT  
 AATCAGAATGATCCCAATAGATGTGAACCTTTGAGCTTCTGTTGGTATTGGACTATATTGGTATCAACA  
 TGGCTTCACTGAATTCCGATTAACCCAATTGCTCTGTATTTGGTGGAGCAAAGATTCAAAAACCTGCTT  
 TAAGTCATGCTTATGCTGCTGGTGGCAGTCATTTGAAGAAAAACAGTCCTTGGAGAAAAGCAGTCGTGC  
 TTAAGTTCAAAGCTAATGATCAGGATATGACAACTCCGTTCCAGTAATAAATACAGCTCATCT

ACGCGTACGCGGCCGCTCGAGCAGAACTCATCTCAGAAGAGGATCTGGCAGCAAATGATATCCTGGATT  
 ACAAGGATGACGACGATAAGGTTTAA

**Protein Sequence:**

>RC225723 representing NM\_001122659  
 Red=Cloning site Green=Tags(s)

MQPPPSLCGRALVALVLACGLSRIWGEERGFPPDRATPLLQTAEIMTPPTKTLWPKGSNASLARS LAPAE  
 VPKGDRTAGSPRTISPPPCQGP I E I K E T F K Y I N T V V S C L V F V L G I I G N S T L L R I I Y K N K M R N G P N I L I  
 A S L A L G D L L H I V I D I P I N V Y K L L A E D W P F G A E M C K L V P F I Q K A S V G I T V L S L C A L S I D R Y R A V A S W S R I K  
 G I G V P K W T A V E I V L I W V S V V L A V P E A I G F D I I T M D Y K G S Y L R I C L L H P V Q K T A F M Q F Y K T A K D W W L F S F  
 Y F C L P L A I T A F F Y T L M T C E M L R K K S G M Q I A L N D H L K Q R R E V A K T V F C L V L V F A L C W L P L H L S R I L K L T L Y  
 N Q N D P N R C E L L S F L L V L D Y I G I N M A S L N S C I N P I A L Y L V S K R F K N C F K S C L C C W C Q S F E E K Q S L E E K Q S C  
 L K F K A N D H G Y D N F R S S N K Y S S

TRTRPLEQKLISEEDLAANDILDYKDDDDKV

**Chromatograms:**

[https://cdn.origene.com/chromatograms/mk6175\\_b03.zip](https://cdn.origene.com/chromatograms/mk6175_b03.zip)

**Restriction Sites:**

Sgfl-Mlul

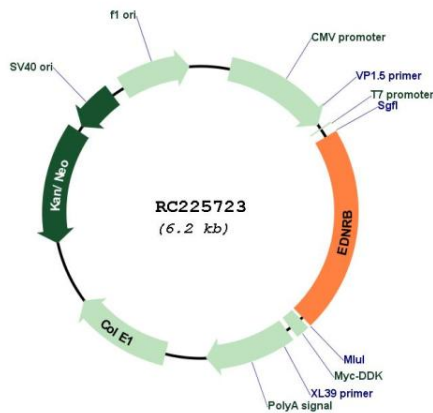


**Protein Pathways:** Calcium signaling pathway, Melanogenesis, Neuroactive ligand-receptor interaction

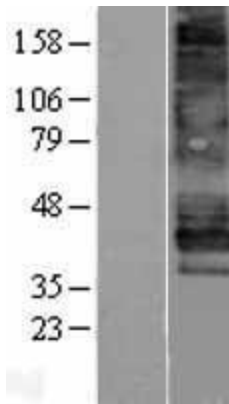
**MW:** 49.64 kDa

**Gene Summary:** The protein encoded by this gene is a G protein-coupled receptor which activates a phosphatidylinositol-calcium second messenger system. Its ligand, endothelin, consists of a family of three potent vasoactive peptides: ET1, ET2, and ET3. Studies suggest that the multigenic disorder, Hirschsprung disease type 2, is due to mutations in the endothelin receptor type B gene. Alternative splicing and the use of alternative promoters results in multiple transcript variants. [provided by RefSeq, Oct 2016]

**Product images:**



Circular map for RC225723



Western blot validation of overexpression lysate (Cat# [LY426542]) using anti-DDK antibody (Cat# [TA50011-100]). Left: Cell lysates from untransfected HEK293T cells; Right: Cell lysates from HEK293T cells transfected with RC225723 using transfection reagent MegaTran 2.0 (Cat# [TT210002]).