

## Product datasheet for **RC225722**

### **SPATC1 (NM\_001134374) Human Tagged ORF Clone**

#### **Product data:**

Product Type:	Expression Plasmids
Product Name:	SPATC1 (NM_001134374) Human Tagged ORF Clone
Tag:	Myc-DDK
Symbol:	SPATC1
Synonyms:	SPATA15
Mammalian Cell Selection:	Neomycin
Vector:	pCMV6-Entry (PS100001)
E. coli Selection:	Kanamycin (25 ug/mL)



[View online »](#)

**ORF Nucleotide Sequence:**

>RC225722 representing NM\_001134374  
 Red=Cloning site Blue=ORF Green=Tags(s)

TTTTGTAATACGACTCACTATAGGGCGGCCGGGAATTCGTCGACTGGATCCGGTACCGAGGAGATCTGCC  
 GCC**CGGATCGCC**

ATGTCTCTACTACCAATTATGAAGGGCTTCGGCATCAGATAGAGAGGCTGGTGGCGGAAAAATGAGGAAC  
 TGAAGAAGTTGGTGGCTCATTTCGGGAGAATCACGAGCTCAAGTCAGCGATCAAGACTCAGGCAGGCGG  
 GCTCGGCATCAGCGGGTTCACGAGTGGGCTTGGTGGGCAACAGCAGGCCTTTCCTCAGCCAGAACAAT  
 GGTGTCTTCTGCCCCCGTCCCCAGCAGTGGCAAACGACGAGTCTCGAAGAAGTGGGGATCATGGCCT  
 TGGCACCCCTGGCCGAGATGCTAACAGCTTGCAGCCAGCGCCACACCGGGCTCACTCATGAGCCCTT  
 GACAGGCACCCTCAGCACGCTGCTGTCTGGCCAGCACCCACGTACAGAGCAGCCCTCACCAGCTTC  
 CTGACCAGTCCCATTGCGGGACCCCTAACAGGCACACTGGCCAGTTCCTGGGCTGCCCTCCACTGGCA  
 CCCTGACTCCCAGCAGCCTCGTGGCAGGCCCTGTGGCCATGTCCAGAGCAGCCCTGATAGCCCTGT  
 GATGGGACGGTGGCTGTCTCTCTGAGCAGCCCTCCTCAGCTCCACTGCCACCCACCAGGGTCTCT  
 CAGAACCTGCTGGCAACCCCATGAGCAACCTGGTCTGCCAGAGGCCCAAGGCTGCGGCTGGCTGAGC  
 CACTCCGCGGAGGCCCACTGGGCCAGTCCCAGCTTGCCTGGTACCCACTGCCACCACCAAAGTCCC  
 ACTCTCCACTGAGCCCCCAGTCGACCCAGGACCCAGAGCCTCTCAGCATGGCGTTTGCAGGAGCACCC  
 CTCCAGACCTCCACCCCTATCGGAGCCATGGGCACACCTGCTCCCAAGACGGCCTTCTCCTTCAACACTT  
 CGGACACACAGGCCAGCCAGTCCCGCCAGGAACAAGTGGTCCCTGCATCTGTCCCACCTCCCCAC  
 CACCTCCCCACGGTACCGTCTTGCCTTGCCTTGCCTTGCCTTGCCTTGCCTTGCCTTGCCTTGCCTT  
 CCCTCAAGCACCCACATCGCCAGGGTCCCGCCATCCCTTCCCCTTCCCCTTCCCCTTCCCCTTCCCCT  
 AGAACCTGCCTGTCCCCACTGTCTCCACACAACGCCACTCCCACCTCGTACCTCATCTCCCCGGC  
 TTCAGTCAATGACTCTCGAGGTCCAGCACACAGAACCGTTCGACGAAGAGCATGATGGAGTGGAAACGG  
 AAGCTGGCCACCGAAGACCAGCAAGTTCCTCCGAGAACCCCGAGGCTTCCCTGAACCCAG

**ACGCGT**ACGCGGCCGCTCGAGCAGAACTCATCTCAGAAGAGGATCTGGCAGCAATGATATCCTGGATT  
 ACAAGGATGACGACGATAAGGTTTAA

**Protein Sequence:**

>RC225722 representing NM\_001134374  
 Red=Cloning site Green=Tags(s)

MSLLTNYEGLRHQIERLVRENEELKKLVRLIRENHELKSAIKTQAGGLGISGFTSGLGEATAGLSSRQNN  
 GVFLPPSPAVANERVLEEVGIMALAPLAEMLTSLQPSATPGSLMSPLTGTLSTLLSGPAPTSQSSPLTSF  
 LTSPFIAGPLTGLASSLGLPSTGTLTPSSLVAGPVAMSQSSPLIAPVMGTAVVLSLSSPLLSSSTATPPGVS  
 QNLLANPMSNLVLEAPRLRLAEPLRGGPTGPQSPACVVPTATTKVPLSTEPPQSTQDPEPLSMAFAGAP  
 LQTSTPIGAMGTPAPKTAFSFNTSDTQAQPSAAQEQVVPASVPTSPTTSPVTVLASAPALAPQVATSYT  
 PSSSTTHIAQGAPHPSPRMHNSPTQNLVPHCPPHNAHSPRTPSSPASVNDSTRGPRTEPSTKSMMEVER  
 KLAHRKTSKFPENPRGFPEPQ

**TR**TRPLEQKLISEEDLAANDILDYKDDDDKV

**Chromatograms:**

[https://cdn.origene.com/chromatograms/mk8035\\_b05.zip](https://cdn.origene.com/chromatograms/mk8035_b05.zip)

**Restriction Sites:**

SgfI-MluI

**Cloning Scheme:**


**ACCN:** NM\_001134374

**ORF Size:** 1323 bp

**OTI Disclaimer:** The molecular sequence of this clone aligns with the gene accession number as a point of reference only. However, individual transcript sequences of the same gene can differ through naturally occurring variations (e.g. polymorphisms), each with its own valid existence. This clone is substantially in agreement with the reference, but a complete review of all prevailing variants is recommended prior to use. [More info](#)

**OTI Annotation:** This clone was engineered to express the complete ORF with an expression tag. Expression varies depending on the nature of the gene.

**Components:** The ORF clone is ion-exchange column purified and shipped in a 2D barcoded Matrix tube containing 10ug of transfection-ready, dried plasmid DNA (reconstitute with 100 ul of water).

**Reconstitution Method:**

1. Centrifuge at 5,000xg for 5min.
2. Carefully open the tube and add 100ul of sterile water to dissolve the DNA.
3. Close the tube and incubate for 10 minutes at room temperature.
4. Briefly vortex the tube and then do a quick spin (less than 5000xg) to concentrate the liquid at the bottom.
5. Store the suspended plasmid at -20°C. The DNA is stable for at least one year from date of shipping when stored at -20°C.

**RefSeq:** [NM\\_001134374.2](#)

**RefSeq ORF:** 1326 bp

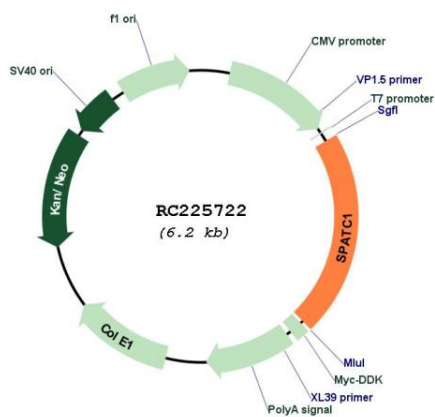
**Locus ID:** 375686

**UniProt ID:** [Q76KD6](#)

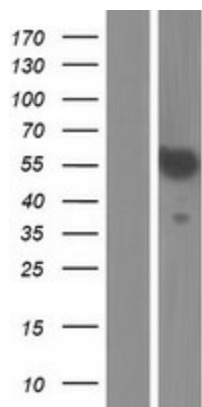
**Cytogenetics:** 8q24.3

**MW:** 45.2 kDa

Product images:



Circular map for RC225722



Western blot validation of overexpression lysate (Cat# [LY427404]) using anti-DDK antibody (Cat# [TA50011-100]). Left: Cell lysates from untransfected HEK293T cells; Right: Cell lysates from HEK293T cells transfected with RC225722 using transfection reagent MegaTran 2.0 (Cat# [TT210002]).