

## Product datasheet for RC225719

### PIP3E (IPCEF1) (NM\_001130700) Human Tagged ORF Clone

#### Product data:

Product Type:	Expression Plasmids
Product Name:	PIP3E (IPCEF1) (NM_001130700) Human Tagged ORF Clone
Tag:	Myc-DDK
Symbol:	IPCEF1
Synonyms:	PIP3-E
Vector:	pCMV6-Entry (PS100001)
E. coli Selection:	Kanamycin (25 ug/mL)
Cell Selection:	Neomycin
ORF Nucleotide Sequence:	>RC225719 representing NM_001130700 Red=Cloning site Blue=ORF Green=Tags(s)

TTTTGTAATACGACTCACTATAGGGCGCCGGGAATTCGTCGACTGGATCCGGTACCGAGGAGATCTGCC  
GCC**CGGATCGCC**

ATGACATCATACATGGCTATTGATGGCAGTGCTCTTCAGGTTCCCTTGCCTCAGAAGCCAGGAGGAAAA  
CTCAAGGTTTTCTCACGATGAGTCGGAGGAGGATATCGTGAAAGATCTGGGCCATGCTGACTGCCAAGG  
GTGGCTGTATAAGAAAAAGGAAAAGGGAAGTTTCTAAGCAACAAATGGAAAAAGTTCTGGGTGATACTG  
AAGGGGTGCTCACTGTACTGGTATAGCAATCAAATGGCAGAGAAAGCTGATGGATTTGTCAACCTGCCTG  
ATTTCACTGTGGAAAGAGCATCTGAATGCAAGAAAAAGCATGCTTTTAAGATCAGCCATCCACAGATCAA  
GACCTTTTATTTGCAGCTGAGAATGTGCAGGAAATGAACGTGTGGTTAAATAAACTTGGATCGGCTGTA  
ATCCATCAGGAATCCACTACAAAGGATGAAGAATGTTACAGTGAAGTGAACAGGAAGATCCAGAAATAG  
CTGCGGAGACACCACCCCTCCTCACGCTTCCCAGACTCAGTCTTTGACTGCACAGCAGGCATCTTCATC  
CTCACCCAGCCTGAGTGGAAACGTCGTATTCTTTCTCTCCCTGGAAAATACAGTGAAGACACCCAGCAGT  
TTTCTTCTCCTTATCTAAAGAGAGACAATCCTTGCTGTGCAAGTTCATTACCTGTACCCTCAGAGGCAGCATCCACAA  
GGCCCTGGAAAACAGTTTTGTGCATCAGAAAGTGGATTTTTGAACTCTTTATCTAGTGATGATACTTCT  
TCATTGAGTAGCAATCATGACCATCTTACTGTCCAGATAAGCCTGCTGGATCAAAGATCATGGACAAAAG  
AAGAGACAAAAGTGTCTGAAGATGATGAAATGGAGAAGCTGTACAAATCATTAGAGCAAGCTAGTCTATC  
TCCTCTTGGGGACCGACGACCTTCGACTAAAAAGGAGTTGAGAAAATCCTTTGTTAAGCGGTGTA AAAAT  
CCATCTATAAACGAGAACTCCACAAAATCCGAACATTGAATAGCACATTAAGTGTAAAGAACATGATC  
TGGCCATGATTAACAGTTGCTGGATGACCCGAAGCTGACAGCCAGGAAATACAGAGAGTGGAAAGTCAT  
GAACACCCCTGCTGATCCAGGACATCTATCAGCAGCAGCGGGCTTCGCCTGCCCTGATGACTGATGAC  
ACCCCCAGGAACTCAAGAAATCACCTTCTTCTCCCTCTGTTGAAAATTCATT

**ACGCGT**ACGCGGCCGCTCGAGCAGAAACTCATCTCAGAAGAGGATCTGGCAGCAAATGATATCCTGGATT  
ACAAGGATGACGACGATAAGGTTTAA



[View online »](#)

Protein Sequence: >RC225719 representing NM\_001130700  
 Red=Cloning site Green=Tags(s)

MTSYMAIDGSALQVPLRQKPRRKQTQGF LTMSRRRISCKDLGHADCQGWLYKKKEKGSFLSNKWKKFVWIL  
 KGSSLYWYSNQMAEKADGFVNLPDFTVRASECKKKHAFKISHPQIKTFYFAAENVQEMNVWLNKLGSAV  
 IHQESTTKDEECYSESEQEDPEIAAETPPPHASQTQSLTAQQASSSSPSL SGTSYSFSSLENTVKT PSS  
 FPSSLSKERQSLPDTVNSLSAAEDEGQPI TFAVQVHSPVPSEAGIHKALENSFVTSESGFLNSLSSDDTS  
 SLSSNHDHLTVDPK PAGSKIMDKKETK VSEDDMEKLYKSL EQASL SPLGDRRPSTKELRKS FVKRCKN  
 PSINEK LHKIRTLNSTLKCKEHLAMINQLLDDPKLTARKYREWKVMNTLLIQDIYQQRAS PPD TDD  
 TPQELKKSPSSPSVENSI

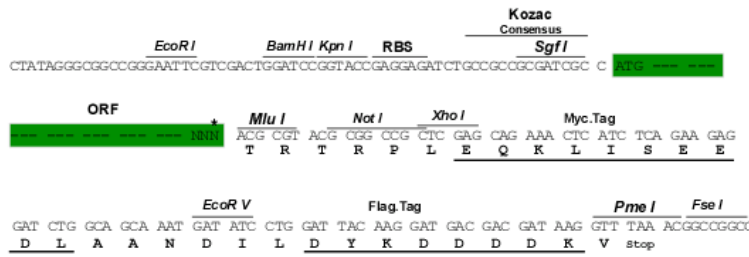
TRTRPLEQKLISEEDLAANDILDYKDDDDKV

Restriction Sites:

Sgfl-MluI

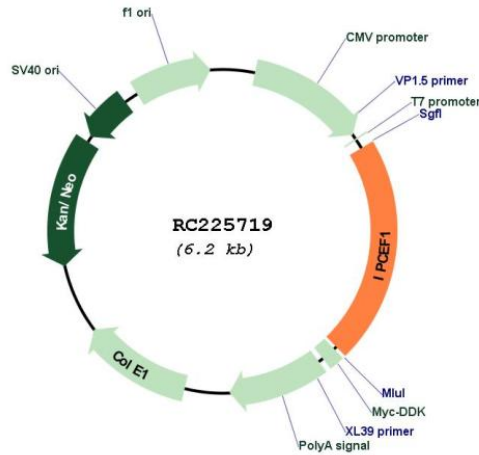
Cloning Scheme:

Cloning sites used for ORF Shuttling:



\* The last codon before the Stop codon of the ORF

Plasmid Map:



ACCN: NM\_001130700

<b>ORF Size:</b>	1314 bp
<b>OTI Disclaimer:</b>	The molecular sequence of this clone aligns with the gene accession number as a point of reference only. However, individual transcript sequences of the same gene can differ through naturally occurring variations (e.g. polymorphisms), each with its own valid existence. This clone is substantially in agreement with the reference, but a complete review of all prevailing variants is recommended prior to use. <a href="#">More info</a>
<b>OTI Annotation:</b>	This clone was engineered to express the complete ORF with an expression tag. Expression varies depending on the nature of the gene.
<b>Components:</b>	The ORF clone is ion-exchange column purified and shipped in a 2D barcoded Matrix tube containing 10ug of transfection-ready, dried plasmid DNA (reconstitute with 100 ul of water).
<b>Reconstitution Method:</b>	<ol style="list-style-type: none"><li>1. Centrifuge at 5,000xg for 5min.</li><li>2. Carefully open the tube and add 100ul of sterile water to dissolve the DNA.</li><li>3. Close the tube and incubate for 10 minutes at room temperature.</li><li>4. Briefly vortex the tube and then do a quick spin (less than 5000xg) to concentrate the liquid at the bottom.</li><li>5. Store the suspended plasmid at -20°C. The DNA is stable for at least one year from date of shipping when stored at -20°C.</li></ol>
<b>RefSeq:</b>	<a href="#">NM_001130700.1</a> , <a href="#">NP_001124172.1</a>
<b>RefSeq Size:</b>	6818 bp
<b>RefSeq ORF:</b>	1317 bp
<b>Locus ID:</b>	26034
<b>UniProt ID:</b>	<a href="#">Q8WWN9</a>
<b>Cytogenetics:</b>	6q25.2
<b>MW:</b>	49.1 kDa
<b>Gene Summary:</b>	Enhances the promotion of guanine-nucleotide exchange by PSCD2 on ARF6 in a concentration-dependent manner.[UniProtKB/Swiss-Prot Function]