

## Product datasheet for RC225718

### PIP3E (IPCEF1) (NM\_001130699) Human Tagged ORF Clone

#### Product data:

**Product Type:** Expression Plasmids  
**Product Name:** PIP3E (IPCEF1) (NM\_001130699) Human Tagged ORF Clone  
**Tag:** Myc-DDK  
**Symbol:** IPCEF1  
**Synonyms:** PIP3-E  
**Vector:** pCMV6-Entry (PS100001)  
**E. coli Selection:** Kanamycin (25 ug/mL)  
**Cell Selection:** Neomycin  
**ORF Nucleotide Sequence:** >RC225718 representing NM\_001130699  
 Red=Cloning site Blue=ORF Green=Tags(s)

TTTTGTAATACGACTCACTATAGGGCGCCGGAATTCGTCGACTGGATCCGGTACCGAGGAGATCTGCC  
 GCC**CGGATCGCC**

ATGACATCATACATGGCTATTGATGGCAGTGCTCTTCAGGTTCCCTTGCCTCAGAAGCCAGGAGGAAAA  
 CTC AAGTTTTCTCACGATGAGTCGGAGGAGGATATCGTGAAAGATCTGGGCCATGCTGACTGCCAAGG  
 GTGGCTGTATAAGAAAAAGGAAAAGGGAAGTTTCTAAGCAACAAATGGAAAAAGTTCTGGGTGATACTG  
 AAGGGGTCTGACTGTACTGGTATAGCAATCAAATGGCAGAGAAAGCTGATGGATTTGTCAACCTGCCTG  
 ATTTCACTGTGGAAAGAGCATCTGAATGCAAGAAAAAGCATGCTTTTAAGATCAGCCATCCACAGATCAA  
 GACCTTTATTTTGCAGCTGAGAATGTGCAGGAAATGAACGTGTGGTTAAATAAACTTGGATCGGCTGTA  
 ATCCATCAGGAATCCACTACAAAGGATGAAGAATGTTACAGTGAAGTGAACAGGAAGATCCAGAAATAG  
 CTGCGGAGACACCACCCCTCCTCACGCTTCCCAGACTCAGTCTTTGACTGCACAGCAGGCATCTTCATC  
 CTCACCCAGCCTGAGTGGAAACGTCGATTTCTTTCTTCCCTGGAAAATACAGTGAAGACACCCAGCAGT  
 TTTCTTCTCCTTATCTAAAGAGAGACAATCCTTGCTGTGCAAGTTCATTCACCTGTACCCTCAGAGGCAGGCATCCACAA  
 ATGAGGGACAACCAATAACGTTTTGCTGTGCAAGTTCATTCACCTGTACCCTCAGAGGCAGGCATCCACAA  
 GGCCCTGGAAAACAGTTTTGTCACATCAGAAAGTGGATTTTTGAACTCTTTATCTAGTGATGATACTTCT  
 TCATTGAGTAGCAATCATGACCATCTTACTGTCCAGATAAGCCTGCTGGATCAAAGATCATGGACAAAAG  
 AAGAGACAAAAGTGTCTGAAGATGATGAAATGGAGAAGCTGTACAAATCATTAGAGCAAGCTAGTCTATC  
 TCCTCTTGGGGACCGACGACCTTCGACTAAAAAGGAGTTGAGAAAATCCTTTGTTAAGCGGTGTA AAAAT  
 CCATCTATAAACGAGAACTCCACAAAATCCGAACATTGAATAGCACATTAAGTGTAAAGAACATGATC  
 TGGCCATGATTAACAGTTGCTGGATGACCCGAAGCTGACAGCCAGGAAATACAGAGAGTGGAAAGTCAT  
 GAACACCCCTGCTGATCCAGGACATCTATCAGCAGCAGCGGGCTTCGCTGCCCTGATGACTGATGAC  
 ACCCCCCAGGAACTCAAGAAATCACCTTCTTCCCTCTGTTGAAAATCCATT

**ACGCGT**ACGCGGCCGCTCGAGCAGAAACTCATCTCAGAAGAGGATCTGGCAGCAAATGATATCCTGGATT  
 ACAAGGATGACGACGATAAGGTTTAA



Protein Sequence: >RC225718 representing NM\_001130699  
 Red=Cloning site Green=Tags(s)

MTSYMAIDGSALQVPLRQKPRRKQTQGF LTMSRRRISCKDLGHADCQGWLYKKKEKGSFLSNKWKKFVWIL  
 KGSSLYWYSNQMAEKADGFVNLPDFTVRASECKKKHAFKISHPQIKTFYFAAENVQEMNVWLNKLGSAV  
 IHQESTTKDEECYSESEQEDPEIAAETPPPPHASQTQSLTAQQASSSSPSL SGTSYFSSELENTVKT PSS  
 FPSSLSKERQSLPDTVNSLSAAEDEGQPI TFAVQVHSPVSEAGIHKALENSFVTSSEGLNSLSSDDTS  
 SLSSNHDHLTVDPK PAGSKIMDKETK VSEDEMEKLYKLEQASLSPLGDRRPSTKELRKS FVKRCKN  
 PSINEK LHKIRTLNSTL KCKEHLAMINQLLDDPKLTARKYREWKVMNTLLIQDIYQQRAS PDDTDD  
 TPQELK KSPSSPSVENSI

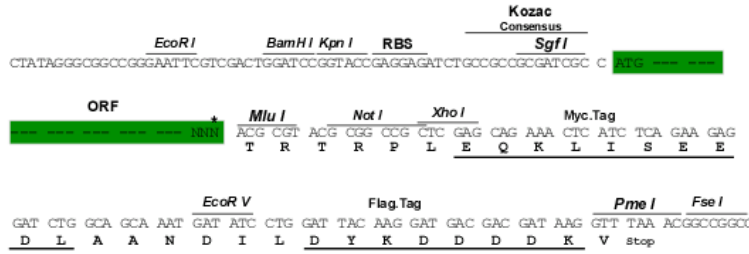
TRTRPLEQKLISEEDLAANDILDYKDDDDKV

Restriction Sites:

Sgfl-MluI

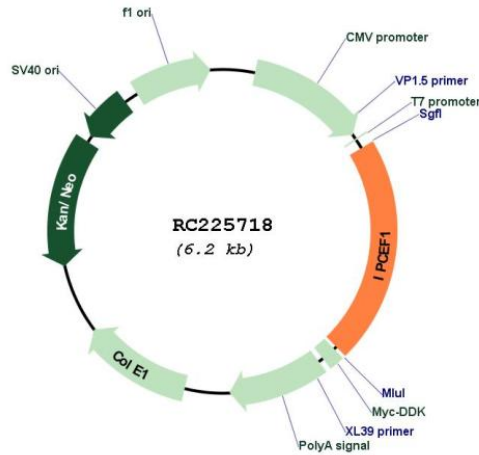
Cloning Scheme:

Cloning sites used for ORF Shuttling:



\* The last codon before the Stop codon of the ORF

Plasmid Map:



ACCN: NM\_001130699

<b>ORF Size:</b>	1314 bp
<b>OTI Disclaimer:</b>	The molecular sequence of this clone aligns with the gene accession number as a point of reference only. However, individual transcript sequences of the same gene can differ through naturally occurring variations (e.g. polymorphisms), each with its own valid existence. This clone is substantially in agreement with the reference, but a complete review of all prevailing variants is recommended prior to use. <a href="#">More info</a>
<b>OTI Annotation:</b>	This clone was engineered to express the complete ORF with an expression tag. Expression varies depending on the nature of the gene.
<b>Components:</b>	The ORF clone is ion-exchange column purified and shipped in a 2D barcoded Matrix tube containing 10ug of transfection-ready, dried plasmid DNA (reconstitute with 100 ul of water).
<b>Reconstitution Method:</b>	<ol style="list-style-type: none"><li>1. Centrifuge at 5,000xg for 5min.</li><li>2. Carefully open the tube and add 100ul of sterile water to dissolve the DNA.</li><li>3. Close the tube and incubate for 10 minutes at room temperature.</li><li>4. Briefly vortex the tube and then do a quick spin (less than 5000xg) to concentrate the liquid at the bottom.</li><li>5. Store the suspended plasmid at -20°C. The DNA is stable for at least one year from date of shipping when stored at -20°C.</li></ol>
<b>RefSeq:</b>	<a href="#">NM_001130699.1</a> , <a href="#">NP_001124171.1</a>
<b>RefSeq Size:</b>	6858 bp
<b>RefSeq ORF:</b>	1317 bp
<b>Locus ID:</b>	26034
<b>UniProt ID:</b>	<a href="#">Q8WWN9</a>
<b>Cytogenetics:</b>	6q25.2
<b>MW:</b>	49.1 kDa
<b>Gene Summary:</b>	Enhances the promotion of guanine-nucleotide exchange by PSCD2 on ARF6 in a concentration-dependent manner.[UniProtKB/Swiss-Prot Function]