

Product datasheet for **RC225717**

MEF2A (NM_001130927) Human Tagged ORF Clone

Product data:

Product Type:	Expression Plasmids
Product Name:	MEF2A (NM_001130927) Human Tagged ORF Clone
Tag:	Myc-DDK
Symbol:	MEF2A
Synonyms:	ADCAD1; mef2; RSRFC4; RSRFC9
Mammalian Cell Selection:	Neomycin
Vector:	pCMV6-Entry (PS100001)
E. coli Selection:	Kanamycin (25 ug/mL)



[View online »](#)

ORF Nucleotide
Sequence:

>RC225717 representing NM_001130927
Red=Cloning site Blue=ORF Green=Tags(s)

TTTTGTAATACGACTCACTATAGGGCGGCCGGAATTCGTCGACTGGATCCGGTACCGAGGAGATCTGCC
GCCGCGATCGCC

ATGGGGCGGAAGAAAATACAAATCACACGCATAATGGATGAAAGGAACCGACAGACTTTAAGAAAGAAAG
GCCTTAATGGTTGTGAGAGCCCTGATGCTGACGATTACTTTGAGCACAGTCCACTCTCGGAGGACAGATT
CAGCAAATAAATGAAGATAGTATTTTTATTTCAAACGAGGCCCTCCTGGTCTGCCACCTCAGAATTT
TCAATGTCTGTACAGTTCAGTGACCAGCCCAATGCTTTGCTCCTACCTAACCAGGGAGTTCAGTGG
TGTCCCATCTTTGGCAGCCAGCTCAACGTTAACAGATTCAAGCATGCTCTCTCCACCTCAAACCAATT
ACATAGAAATGTGTCTCCTGGAGCTCCTCAGAGACCACCAAGTACTGGCAATGCAGGTGGGATGTTGAGC
ACTACAGACCTCACAGTGCCAAATGGAGCTGGAAGCAGTCCAGTGGGGAATGGATTTGTAAGTCAAGAG
CTTCTCCAAATTTGATTGGAGCTACTGGTGCAAAATAGCTTAGGCAAAGTCATGCCTACAAAGTCTCCCC
TCCACCAGGTGGTGGTAATCTTGAATGAACAGTAGGAAACCAGATCTTCGAGTTGTCATCCCCCTTCA
AGCAAGGCATGATGCCTCCACTATCGGAGGAAGAGGAATTGGAGTTGAATACCCAAAGGATCAGTAGTT
CTCAAGCCACTCAACCTCTTGTACCCAGTCTGTCTGTGACAACCCCAAGCTTGCCTCCGCAAGGACT
TGTGTAATCAGCAATGCCGACTGCCTACAACACTGATTATTCACTGACCAGCGTGACCTGTGAGCCCTT
CAAGGCTTCAACTCGCCAGGAATGCTGTGCTGGGACAGGTGTCGGCCTGGCAGCAGCACCACCTAGGAC
AAGCAGCCCTCAGCTCTTGTGTCTGGAGGGCAGTTATCTCAGGGTTCATTTATCCATTAATACCAA
CCAAAACATCAGCATCAAGTCCGAACCGATTTACCTCCTCGGGATCGTATGACCCATCGGGCTCCAG
CAGCAGCAGCAGCAGCAGCAGCAGCAGCAGCAGCCGCCACCACCAGCCAGCCCAACCCCGCAGC
CCCAGCCCGACAGGAAATGGGGCGCTCCCTGTGGCAGTCTGAGCAGCTCTAGTACTCCTATGATGG
CAGTGATCGGGAGGATCCACGGGGCGACTTCCATTCTCCAATTGTCTTGCCGACCCCAACACTGAG
GACAGAGAAAGCCCTTGTAAAGCGAATGAGGATGGACGCTGGGTGACC

AGCGGACCGACGCGTACGCGGCCGCTCGAGCAGAAACTCATCTCAGAAGAGGATCTGGCAGCAAATGATATCC
TGGATTACAAGGATGACGACGATAAGGTTAA

Protein Sequence:

>RC225717 representing NM_001130927
Red=Cloning site Green=Tags(s)

MGRKKIQITRIMDERNRQTLRKKGLNGCESPDADDYFEHSPLSEDRFSKLNEDSDFIFKRGPPGLPPQNF
SMSVTVPVTPSPNALSYTNPGSSLVSPSLAASSTLTDSSMLSPPTLHRNVSPGAPQRPSTGNAGGMLS
TTDLTPVNGAGSSPVNGFVNSRASPNLIGATGANS LGKVMPTKSPPPPGGNLGMNSRKPDLRVVIPP
SKGMMPPLSEEELELNTQRISSSQATQPLATPVVSVTTPSLPPQGLVYSAMPAYNTDYSLSADLSAL
QGFNSPGMLSLGQVSAWQQHHLGQAALSSLVAGGQLSQGSNLSINTNQNISIKSEPI SPPRDRMTPSGFQ
QQQQQQQQPPPPPPQPQPQPQPRQEMGRSPVDSLSSSSSYDGDREDPRGDFHSPIVLGRPPNTE
DRESPSVKRMRMDAWVT

SGPTRRRLKQLISEEDLAANDILDYKDDDDKV

Chromatograms:

https://cdn.origene.com/chromatograms/mk8059_h06.zip

Restriction Sites:

Sgfl-RsrII

Cloning Scheme:


ACCN: NM_001130927

ORF Size: 1311 bp

OTI Disclaimer: The molecular sequence of this clone aligns with the gene accession number as a point of reference only. However, individual transcript sequences of the same gene can differ through naturally occurring variations (e.g. polymorphisms), each with its own valid existence. This clone is substantially in agreement with the reference, but a complete review of all prevailing variants is recommended prior to use. [More info](#)

OTI Annotation: This clone was engineered to express the complete ORF with an expression tag. Expression varies depending on the nature of the gene.

Components: The ORF clone is ion-exchange column purified and shipped in a 2D barcoded Matrix tube containing 10ug of transfection-ready, dried plasmid DNA (reconstitute with 100 ul of water).

Reconstitution Method:

1. Centrifuge at 5,000xg for 5min.
2. Carefully open the tube and add 100ul of sterile water to dissolve the DNA.
3. Close the tube and incubate for 10 minutes at room temperature.
4. Briefly vortex the tube and then do a quick spin (less than 5000xg) to concentrate the liquid at the bottom.
5. Store the suspended plasmid at -20°C. The DNA is stable for at least one year from date of shipping when stored at -20°C.

RefSeq: [NM_001130927.1](#), [NP_001124399.1](#)

RefSeq ORF: 1314 bp

Locus ID: 4205

UniProt ID: [Q02078](#)

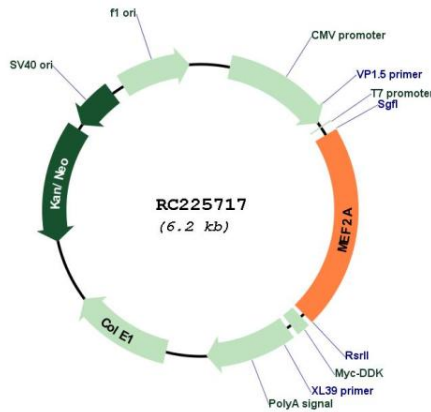
Cytogenetics: 15q26.3

Protein Families: Transcription Factors

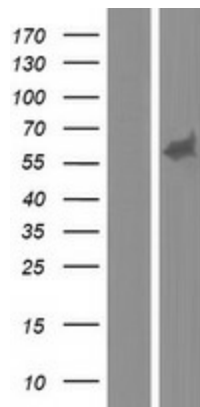
MW: 46.3 kDa

Gene Summary: The protein encoded by this gene is a DNA-binding transcription factor that activates many muscle-specific, growth factor-induced, and stress-induced genes. The encoded protein can act as a homodimer or as a heterodimer and is involved in several cellular processes, including muscle development, neuronal differentiation, cell growth control, and apoptosis. Defects in this gene could be a cause of autosomal dominant coronary artery disease 1 with myocardial infarction (ADCAD1). Several transcript variants encoding different isoforms have been found for this gene.[provided by RefSeq, Jan 2010]

Product images:



Circular map for RC225717



Western blot validation of overexpression lysate (Cat# [LY427317]) using anti-DDK antibody (Cat# [TA50011-100]). Left: Cell lysates from untransfected HEK293T cells; Right: Cell lysates from HEK293T cells transfected with RC225717 using transfection reagent MegaTran 2.0 (Cat# [TT210002]).