

## Product datasheet for **RC225706**

### **GCNT7 (NM\_080615) Human Tagged ORF Clone**

#### **Product data:**

Product Type:	Expression Plasmids
Product Name:	GCNT7 (NM_080615) Human Tagged ORF Clone
Tag:	Myc-DDK
Symbol:	GCNT7
Synonyms:	C20orf105; dj1153D9.2; gcnt
Mammalian Cell Selection:	Neomycin
Vector:	pCMV6-Entry (PS100001)
E. coli Selection:	Kanamycin (25 ug/mL)



[View online »](#)

**ORF Nucleotide Sequence:**

>RC225706 representing NM\_080615  
 Red=Cloning site Blue=ORF Green=Tags(s)

TTTTGTAATACGACTCACTATAGGGCGGCCGGAATTCGTCGACTGGATCCGGTACCGAGGAGATCTGCC  
 GCC**GCGATCGCC**

ATGAGCCAGCTTCGAGCCACAAAGTCTGGACTTGTCTGAGGGCAGTCATTTGCATCTTCATTTTTCTTT  
 ACTTAAGGAATCCAACCTCTGCAGAATCAGAAGAAGAACCTGCCCAACCAGAAAGTAGTAGAATGTGGCTT  
 TTACCCAGATGAACTGTGTTCCGCTTTATTTGAAGGAAAAGGGCGGCCCCCAAATGCAAAATTTTGC  
 AAAACCCCTCATAAATCTGAAATACATGCTCATTTACACACACCAGGAAACTGCTCCAGGATTTCTCGGG  
 GGCTGCATTTATAACCAGACCCTGTCTGCAGAAGAGGGCGATTTCTCTTTGGCATATATTATAACTAT  
 TCATAAGGAGCTGGCCATGTTTGTGCAGCTTCTCAGAGCTATTTATGTACCTCAAATGTTTATTGTATT  
 CATGTTGATGAAAAGGCCCAATGAAGTATAAGACTGCTGTGCAAACCTGGTAACTGTTTTGAAAACG  
 TTTTTATTTCTCCAAGACAGAGAAGGTGGCTTATGCTGGCTTTACAAGACTACAGGCAGATATTAATTG  
 TATGAAAGTTCTAGTGCATTCTAAATTTCAATGGAAGTATGTCATCAATCTTTGTGGACAGGATTTCC  
 ATCAAAACCAACAGAGAAATCATACACTACATCAGAAGCAAATGGAGTGATAAAAAATTAATCTCCTGGAG  
 TAATCCAACCATTCACATTAATCCAAGACAAGTCAAAGTCATCTCGAATTCGTTCTTAAAGGAAGTAT  
 CTATGCACCTCCAAATAACAGATTCAAAGACAAACCACCCATAACTTAACCATTTATTTTGAAGTGCT  
 TACTATGTACTTACAAGGAAGTTGTAGAGTTCATACTGACTGACATCCATGCAAAAGACATGCTTCAGT  
 GGTCCAAGACATCCGCAGCCCAGAGCAACACTACTGGGTGACCTGAACCGACTAAAAGATGCTCCAGG  
 TGCTACACCAAACGCTGGCTGGGAAGGAAATGTTTCGAGCCATTAAGCGGAAAAGTGAGGAAGGAAATGTT  
 CATGATGGATGTAAGGCCGCTACGTCGAAGACATCTGCGTATACGGACCAGGAGACCTGCCGTGGCTCA  
 TTCAGTCGCCTTCTCTGTTTCCCAACAAATTCGAACCTCGACAGACCCGCTTGTGGTTACCTGCTTAGA  
 CGGGCGGCACAGACTTCAAGTCTGAGGCAGGCAGGAAGTTCCTATAGAGCCACACTGGCATTTTCAACAG  
 CAGAGTCAATTAATATGAGACTGAACCCG

**ACGCGT**ACGCGGCCGCTCGAGCAGAAACTCATCTCAGAAGAGGATCTGGCAGCAAATGATATCCTGGATT  
 ACAAGGATGACGACGATAAGGTTTAA

**Protein Sequence:**

>RC225706 representing NM\_080615  
 Red=Cloning site Green=Tags(s)

MSQLRATKSGLVVRAVICIFIFLYLRNPTPAESEEPAQPEVVECGFYPDELCSALFEGKGAAPQIAKFC  
 KTPHKSEIHAHLHTPGNCSRISRGLHFITRPLSAEEGDFSLAYIITIHKELAMFVQLLRAIYVPQNVYCI  
 HVDEKAPMKYKTAVQTLVNCFENVFISSKTEKVAYAGFTRLQADINCMKVLVHSKFQWNYVINLCGQDFP  
 IKTNREIIHYIRSKWSDKNITPGVIQPLHIKSKTSQSHLEFVPKGSIYAPPNNRFKDKPPHNLTIYFGSA  
 YYVLTRKFVEFILTDIHAKDMLQWSKDIRSPEQHYWVTLNRLKDAPGATPNAGWEGNVRAIKRKSEEGNV  
 HDGCKGRYVEDICYGPGDLPWLIQSPSLFANKFEPSTDPLVVTCLERRHRLQVLRQAEVPIEPHWHFQQ  
 QSHFNMLNR

**TR**TRPLEQKLISEEDLAANDILDYKDDDDKV

**Chromatograms:**

[https://cdn.origene.com/chromatograms/mk8034\\_g07.zip](https://cdn.origene.com/chromatograms/mk8034_g07.zip)

**Restriction Sites:**

SgfI-MluI

**Cloning Scheme:**


**ACCN:** NM\_080615

**ORF Size:** 1290 bp

**OTI Disclaimer:** The molecular sequence of this clone aligns with the gene accession number as a point of reference only. However, individual transcript sequences of the same gene can differ through naturally occurring variations (e.g. polymorphisms), each with its own valid existence. This clone is substantially in agreement with the reference, but a complete review of all prevailing variants is recommended prior to use. [More info](#)

**OTI Annotation:** This clone was engineered to express the complete ORF with an expression tag. Expression varies depending on the nature of the gene.

**Components:** The ORF clone is ion-exchange column purified and shipped in a 2D barcoded Matrix tube containing 10ug of transfection-ready, dried plasmid DNA (reconstitute with 100 ul of water).

- Reconstitution Method:**
1. Centrifuge at 5,000xg for 5min.
  2. Carefully open the tube and add 100ul of sterile water to dissolve the DNA.
  3. Close the tube and incubate for 10 minutes at room temperature.
  4. Briefly vortex the tube and then do a quick spin (less than 5000xg) to concentrate the liquid at the bottom.
  5. Store the suspended plasmid at -20°C. The DNA is stable for at least one year from date of shipping when stored at -20°C.

**RefSeq:** [NM\\_080615.1](#), [NP\\_542182.1](#)

**RefSeq ORF:** 1293 bp

**Locus ID:** 140687

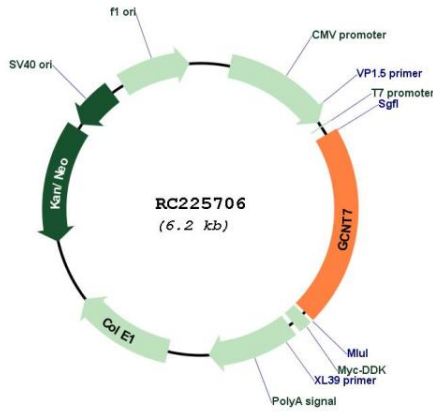
**UniProt ID:** [Q6ZNI0](#)

**Cytogenetics:** 20q13.31

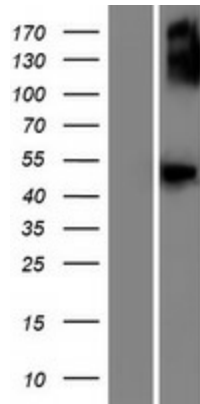
**MW:** 49.1 kDa

Gene Summary: Glycosyltransferase.[UniProtKB/Swiss-Prot Function]

**Product images:**



Circular map for RC225706



Western blot validation of overexpression lysate (Cat# [LY429947]) using anti-DDK antibody (Cat# [TA50011-100]). Left: Cell lysates from untransfected HEK293T cells; Right: Cell lysates from HEK293T cells transfected with RC225706 using transfection reagent MegaTran 2.0 (Cat# [TT210002]).