

## Product datasheet for **RC225700**

### **Cbl c (CBLC) (NM\_001130852) Human Tagged ORF Clone**

#### **Product data:**

Product Type:	Expression Plasmids
Product Name:	Cbl c (CBLC) (NM_001130852) Human Tagged ORF Clone
Tag:	Myc-DDK
Symbol:	Cbl c
Synonyms:	CBL-3; CBL-SL; RNF57
Mammalian Cell Selection:	Neomycin
Vector:	pCMV6-Entry (PS100001)
E. coli Selection:	Kanamycin (25 ug/mL)



[View online »](#)

**ORF Nucleotide Sequence:**

>RC225700 representing NM\_001130852  
 Red=Cloning site Blue=ORF Green=Tags(s)

TTTTGTAATACGACTCACTATAGGGCGGCCGGGAATTCGTGACTGGATCCGGTACCGAGGAGATCTGCC  
 GCC**CGGATCGCC**

ATGGCTCTGGCGGTGGCCCCGTGGGGGCGACAGTGGGAAGAGGCCCGCGCCCTGGCCGGGCAGTCAGGA  
 TGCTGCAGCGCCTAGAAGAGCAATGCGTCGACCCCGGCTGTCCGTGAGTCCCCCTTCGCTGCGGGACCT  
 GCTGCCCCGCACAGCGCAGCTGCTTCGAGAGGTGGCCATTCTCGGCGGGCGGCCGGGAGGCGGCCCC  
 GGGGGTCCCGCGGCTCTGGGACTTTCTACTCATCTACCTGGCCAATCTGGAGGCCAAGAGCAGGCAGG  
 TGGCCGCGCTGCTGCCTCCCGGGGCCAAGGAGTGCCAACGACGAGCTTCCGGGCGGCTCCAGACT  
 CAGGCGACAGCTGGCCAAGCTGGCCATCATCTTCAGCCACATGCACGCAGAGCTGCACGCACTTCCCC  
 GGGGAAAGTACTGTGGACACATGTACCAGCTACCAAGGCCCGCCACACCTTCTGGAGGAAAGTT  
 GCGGAGCCCGGTGTGTGCTGCCCTGGGTGAGTTTGTGCTCCTGGGACCTGCCACCCTGTGGAACC  
 AGGCTGCACAGCCCTGGCCTTGGCACCACCTTACCTCACCTGCAGCGGGCACGTGTCCATCTTCGAG  
 TTGACGTCTTACCAGGCTCTTCAGCCATGGCCAACACTCCTCAAGAACTGGCAGCTCCTGGCAGTCA  
 ACCACCCAGGCTACATGGCCTTCTCACCTATGATGAGGTCCAAGAGCGTCTGCAGGCTGCAGGGACAA  
 GCCAGGACGACTACCTCTACCCAGATGGAAGACCCACAACCCAGACCTGACTGAGCTCGGCCAGGCAGAA  
 CCCAGCAGCGCATCCACGTGTGAGAGGAGCAGCTGCAGCTCTACTGGCCATGGACTCCACATTTGAGC  
 TCTGCAAGATCTGTGCTGAGAGCAACAAGGATGTGAAGATTGAGCCGTGCGGGCACCTGTCTGCAGCTG  
 CTGCTGGCTGCCTGGCAGCACTCGGACAGCCAGACCTGCCCTTCTGCCGTGCGAGATCAAGGGCTGG  
 GAGGCCGTGAGTATCTACCAGTTCACGGTCAGGCTACTGCTGAGGACTCAGGGAACAGCAGTGACCAGG  
 AAGGCAGGGAGTTGGAGCTGGGCAGGTGCCCTTTCGGCTCCTCCATTGCCCCACGGCCAGATCTGCC  
 CCCAGGAAGCCAGAAATGCCAGCCGAAAGTGAGACTCCTAAAGGGGAACTCCCTCCAGCTGCCTG  
 GGACCCAGGACCTGCCCGGCC

**ACGCGT**ACGCGGCCGCTCGAGCAGAAACTCATCTCAGAAGAGGATCTGGCAGCAAATGATATCCTGGATT  
 ACAAGGATGACGACGATAAGGTTTAA

**Protein Sequence:**

>RC225700 representing NM\_001130852  
 Red=Cloning site Green=Tags(s)

MALAVAPWGRQWEEARALGRAVRMLQRLEEQCVDPRLSVSPPSLRDLLPRTAQLLREVAHSRRAAGGGG  
 GPGGGSGDFLLIYLANLEAKSRQVAALLPPRGRRSANDELFRAGSRLRRQLAKLAIIFSHMAELHALFP  
 GGKYCGHMYQLTKAPAHTFWRESCGARCVPWAEFESLLGTCHPVEPGCTALALRTTIDLTC SGHVSIFE  
 FDVFTRLFQWPPTLLKNWQLLAVNHPGYMAFLT YDEVQERLQACRDKPGSYLYPDGKTHNPDTELQAE  
 PQQRIHVSEELQLLYWAMDSTFELCKICAESNKDVKIEPCGHLLCSCCLAAWQHSDSQTCPFCRCEIKGW  
 EAVSIYQFHGQATAEDSGNSDQEGRELELQVPLSAPPLPPRPDLPPRKPRNAQPKVRLLKGN SPPAAL  
 GPQDPAPA

**TR**TRPLEQKLISEEDLAANDILDYKDDDDKV

**Chromatograms:**

[https://cdn.origene.com/chromatograms/mk8059\\_c02.zip](https://cdn.origene.com/chromatograms/mk8059_c02.zip)

**Restriction Sites:**

Sgfl-Mlul

**Cloning Scheme:**


**ACCN:** NM\_001130852

**ORF Size:** 1284 bp

**OTI Disclaimer:** The molecular sequence of this clone aligns with the gene accession number as a point of reference only. However, individual transcript sequences of the same gene can differ through naturally occurring variations (e.g. polymorphisms), each with its own valid existence. This clone is substantially in agreement with the reference, but a complete review of all prevailing variants is recommended prior to use. [More info](#)

**OTI Annotation:** This clone was engineered to express the complete ORF with an expression tag. Expression varies depending on the nature of the gene.

**Components:** The ORF clone is ion-exchange column purified and shipped in a 2D barcoded Matrix tube containing 10ug of transfection-ready, dried plasmid DNA (reconstitute with 100 ul of water).

**Reconstitution Method:**

1. Centrifuge at 5,000xg for 5min.
2. Carefully open the tube and add 100ul of sterile water to dissolve the DNA.
3. Close the tube and incubate for 10 minutes at room temperature.
4. Briefly vortex the tube and then do a quick spin (less than 5000xg) to concentrate the liquid at the bottom.
5. Store the suspended plasmid at -20°C. The DNA is stable for at least one year from date of shipping when stored at -20°C.

**RefSeq:** [NM\\_001130852.1](#), [NP\\_001124324.1](#)

**RefSeq ORF:** 1287 bp

**Locus ID:** 23624

**UniProt ID:** [Q9ULV8](#)

**Cytogenetics:** 19q13.32

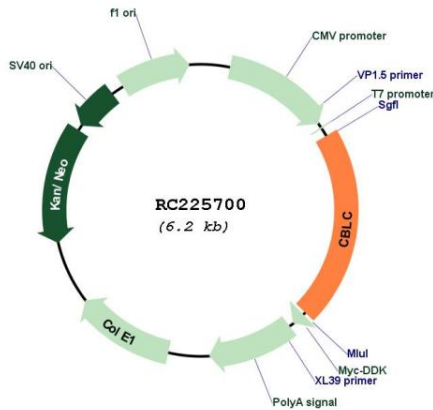
**Protein Families:** Druggable Genome

**Protein Pathways:** Chronic myeloid leukemia, Endocytosis, ErbB signaling pathway, Insulin signaling pathway, Jak-STAT signaling pathway, Pathways in cancer, T cell receptor signaling pathway, Ubiquitin mediated proteolysis

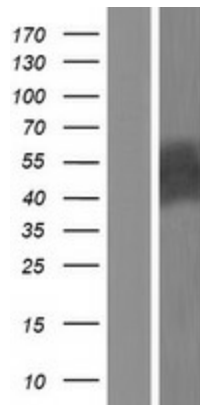
**MW:** 47.2 kDa

**Gene Summary:** This gene encodes a member of the Cbl family of E3 ubiquitin ligases. Cbl proteins play important roles in cell signaling through the ubiquitination and subsequent downregulation of tyrosine kinases. Expression of this gene may be restricted to epithelial cells, and alternatively spliced transcript variants encoding multiple isoforms have been observed for this gene. [provided by RefSeq, Feb 2012]

**Product images:**



Circular map for RC225700



Western blot validation of overexpression lysate (Cat# [LY427289]) using anti-DDK antibody (Cat# [TA50011-100]). Left: Cell lysates from untransfected HEK293T cells; Right: Cell lysates from HEK293T cells transfected with RC225700 using transfection reagent MegaTran 2.0 (Cat# [TT210002]).