

## Product datasheet for **RC225698**

### **TEDC1 (NM\_001134875) Human Tagged ORF Clone**

#### **Product data:**

Product Type:	Expression Plasmids
Product Name:	TEDC1 (NM_001134875) Human Tagged ORF Clone
Tag:	Myc-DDK
Symbol:	TEDC1
Synonyms:	C14orf80
Mammalian Cell Selection:	Neomycin
Vector:	pCMV6-Entry (PS100001)
E. coli Selection:	Kanamycin (25 ug/mL)



[View online »](#)

**ORF Nucleotide Sequence:**

>RC225698 representing NM\_001134875  
 Red=Cloning site Blue=ORF Green=Tags(s)

TTTTGTAATACGACTCACTATAGGGCGGCCGGGAATTCGTCGACTGGATCCGGTACCGAGGAGATCTGCC  
 GCC**GCGATCGCC**

ATGGGGAGGCGGGCAGCGGGTGGACCCCGCGTGGGGCCCGGGCCCTGCCTGAGGCCATCG  
 CCGCGTTGAGTCGGTCGCTGCCCTCGGGACCCAGCCCGAGATCTTCGCGCGCCAAGTTCGACCGTCC  
 GGAGGCGACCTCCGCGCTCTGGCAGCTCCTCTCCGTGTGCTCTCGCCACTCCCTGCGGGCAACGCCTTG  
 GCATCGCTCGCCCTGGAGGTCCAAGCCCGCTTGGTGAAGTCAGCACTATGCTCCAGGGCTACCCGAGGC  
 TGGCACTGGCACAACCTGAGGATGGCTCGCAGGGCAGTCGGGAGCTGCTGCTGGCTCTGTCTGGCT  
 CTTGGCCCGAGGACCTGTGCCGAGCAGATGCTGGCCAGGCCGAGTGCCTCTGGGTGACGAGATGACT  
 GTGTGCCAGTGTGAGGCCCTGGCCAGCCCTGGCCACCTGCACCCACATGGAAGCAGAGGGTCTGTGG  
 ATGTCCGCATGTGCAGTGGCTGATGGAAAGTCGCGTTCGGTGGCGCCAGCTGGTGTCCAGTCAGCA  
 GGAGCAGTGCGCCCTCTGAGCAAGATCCACCTGTACACACGCGGCTGCCACAGCGACCAGAGCCTTAGC  
 CATCTGTCTGCTACTGAAGCAGAGATGCTCAGGGACCCAGAGGGAGGCCAGCAGCTGCTGCGGACTCTGG  
 AGCGTGAGAACCAGCGCCTGGAGGCTGTCTGGCGTGGCGGCGCTCTGAGCTGGTCTTCTGGCGGTGGAT  
 GGACACGGTCTGGGCACCTGTGCCCGGAGGTGCCTGTGCAGCCTCACAGCCACCTTCTGCCCTGG  
 GTCCCCGAGCGCGGGGTGGCGAGTTGGACCTGGTAGTGCGGGAGCTGCAGGCACTGGAGGAGGAGCTGC  
 GGGAGGCTGCGGAGCGCAGGCGGGCGCCCTGGGAGGCCAAGGCTGGAGGCTGTGGACGGGGCCAGAGTG  
 GAGTGCCGCGCGGGCCCTCTCGGGAGGCTGTGGAAAAGGAGCTGGGAGCTCTACAGCAGTGTGGGAG  
 CGAGACGGTGGCCCGCCAGCCCCATGGGCCACACCGGCTGGTGAAGCAGAGGATGGGCGAGCAGGGG  
 ACCGGGACCTGCGGGCAGCTGTGGTGTATCAGGACGCTGAGGAGCCAGGAGCCTGCCTGGAGCGGTGCT  
 ACGTCGACTACAGGGACAGTGTCCGCGAGAACTGGCCAGGCTGGTGGGAGCCCGCCCTGGTCTCATCTGG  
 ATCCCGCCACCTGGACGC

**ACGCGT**ACGCGGCCGCTCGAGCAGAACTCATCTCAGAAGAGGATCTGGCAGCAATGATATCCTGGATT  
 ACAAGGATGACGACGATAAGGTTTAA

**Protein Sequence:**

>RC225698 representing NM\_001134875  
 Red=Cloning site Green=Tags(s)

MGRRRQRVDPAAGARAGALPEAIAALSRSLPSGSPSEIFRRAKFDREATSALWQLLFRVLSPLPAGNAL  
 ASLALQVQARLVKALCSQGYPRLLAQLPEDGSQGSRELLALSWLLARGPVPEQMLAQARVPLGDEMT  
 VCQCEALASPGPPAPHMEAEGPVDVVRHVQWLMGKLRFRWRQLVSSQQEQCALLSKIHLRYTRGCHSDQSL  
 HLSVTEAEMLRDPEGGQQLLRTLRENRQRLAVLAWRRSELVFWRWMDTVLGTCAPEVPAASQPTFLPW  
 VPERGGGELDLVVRELQALEEELREAAERRRAWEAKAGGCGRGPESAAARRASREAVEKELGALQQCWE  
 RDGGPAQPHGPHRLVRREDGAAGDRDLRAAVVIRTLRSQEACLEAVLRRLQGCRQELARLVGARPGLIWI  
 IPPPGR

**TR**TRPLEQKLISEEDLAANDILDYKDDDDKV

**Chromatograms:**

[https://cdn.origene.com/chromatograms/mk8059\\_a09.zip](https://cdn.origene.com/chromatograms/mk8059_a09.zip)

**Restriction Sites:**

Sgfl-Mlul

**Cloning Scheme:**


**ACCN:** NM\_001134875

**ORF Size:** 1278 bp

**OTI Disclaimer:** The molecular sequence of this clone aligns with the gene accession number as a point of reference only. However, individual transcript sequences of the same gene can differ through naturally occurring variations (e.g. polymorphisms), each with its own valid existence. This clone is substantially in agreement with the reference, but a complete review of all prevailing variants is recommended prior to use. [More info](#)

**OTI Annotation:** This clone was engineered to express the complete ORF with an expression tag. Expression varies depending on the nature of the gene.

**Components:** The ORF clone is ion-exchange column purified and shipped in a 2D barcoded Matrix tube containing 10ug of transfection-ready, dried plasmid DNA (reconstitute with 100 ul of water).

**Reconstitution Method:**

1. Centrifuge at 5,000xg for 5min.
2. Carefully open the tube and add 100ul of sterile water to dissolve the DNA.
3. Close the tube and incubate for 10 minutes at room temperature.
4. Briefly vortex the tube and then do a quick spin (less than 5000xg) to concentrate the liquid at the bottom.
5. Store the suspended plasmid at -20°C. The DNA is stable for at least one year from date of shipping when stored at -20°C.

**RefSeq:** [NM\\_001134875.1](#), [NP\\_001128347.1](#)

**RefSeq ORF:** 1281 bp

**Locus ID:** 283643

**UniProt ID:** [Q86SX3](#)

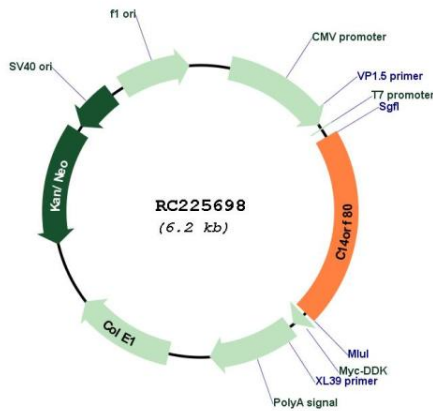
**Cytogenetics:** 14q32.33

**MW:** 46.9 kDa

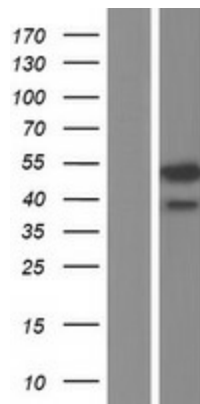
**Gene Summary:**

May play a role in counteracting perturbation of actin filaments, such as after treatment with the actin depolymerizing microbial metabolite Chivosazole F.[UniProtKB/Swiss-Prot Function]

**Product images:**



Circular map for RC225698



Western blot validation of overexpression lysate (Cat# [LY427507]) using anti-DDK antibody (Cat# [TA50011-100]). Left: Cell lysates from untransfected HEK293T cells; Right: Cell lysates from HEK293T cells transfected with RC225698 using transfection reagent MegaTran 2.0 (Cat# [TT210002]).