

Product datasheet for **RC225696**

p73 (TP73) (NM_001126242) Human Tagged ORF Clone

Product data:

Product Type:	Expression Plasmids
Product Name:	p73 (TP73) (NM_001126242) Human Tagged ORF Clone
Tag:	Myc-DDK
Symbol:	p73
Synonyms:	P73
Mammalian Cell Selection:	Neomycin
Vector:	pCMV6-Entry (PS100001)
E. coli Selection:	Kanamycin (25 ug/mL)



[View online »](#)

ORF Nucleotide Sequence:

>RC225696 representing NM_001126242
 Red=Cloning site Blue=ORF Green=Tags(s)

TTTTGTAATACGACTCACTATAGGGCGGCCGGAATTCGTCGACTGGATCCGGTACCGAGGAGATCTGCC
 GCC**CGGATCGC**C

ATGCTGTACGTCGGTGACCCCGCACGGCACCTCGCCACGGCCAGTTCAATCTGCTGAGCAGCACCATGG
 ACCAGATGAGCAGCCGCGCGGCTCGGCCAGCCCTACACCCAGAGCAGCCGCCAGCGTGCCACCCA
 CTCGCCCTACGCACAACCCAGCTCCACCTTCGACACCATGTGCGCGGCGCCTGTATCCCTCCAACACC
 GACTACCCCGGACCCACCACCTTTGAGGTCACTTTCCAGCAGTCCAGCAGGCCAAGTCAGCCACCTGGA
 CGTACTCCCGCTCTTGAAGAACTCTACTGCCAGATCGCAAGACATGCCCCATCCAGATCAAGGTGTC
 CACCCCGCACCCCGGACCGCCATCCGGGCCATGCCTGTTTACAAGAAAGCGGAGCAGTGACCGAC
 GTCGTGAAACGCTGCCCCAACACGAGCTCGGGAGGACTTCAACGAAGGACAGTCTGCTCCAGCCAGCC
 ACCTCATCCGCTGGAAGCAATAATCTCTCGCAGTATGTGGATGACCCTGTACCGGCAGGCAGAGCGT
 CGTGGTGCCCTATGAGCCACCACAGGTGGGGACGGAATCACCACCATCCTGTACAACCTCATGTGTAAC
 AGCAGCTGTGTAGGGGGCATGAACCGCGGCCCATCCTCATCATCATCACCTGGAGATGCGGGATGGGC
 AGGTGCTGGGCCCGCGCTTTGAGGGCCGATCTGCGCCTGTCTGGCCGCGACCGAAAGCTGATGA
 GGACCACTACCGGGAGCAGCAGGCCCTGAACGAGAGCTCCGCCAAGAAGCGGGGCCCGCAGCAAGCGTGCC
 TTCAAGCAGAGCCCCCTGCCGTCCCGCCCTTGGTGCCGGTGTGAAGAAGCGCGGCATGGAGACGAGG
 ACACGTAACCTTCAAGTGCGAGGCGGGGAGAACTTTGAGATCCTGATGAAGCTGAAAGAGAGCCTGGA
 GCTGATGGAGTTGGTGCCGACGCACTGGTGGACTCCTATCGGCAGCAGCAGAGCTCCTACAGAGGCCG
 CCGCGGATGCTCAACAACCATGGCCACGAGTCCAGCCAACGGCGAGATGAGCAGCAGCCACAGCGCC
 CAGTCCATGGTCTCGGGTCCCACTGCACTCGCCACCCCTACCACGCCGACCCAGCCTCGTCAGTT
 TTTTAACAGGATTGGGGTGTCAAACGATCGAGTATTCACCTCCCAAGGGTTACAGAGCATTTACCA
 CCTGCAGAACCTGACCAT

ACGCGTACGCGGCCGCTCGAGCAGAACTCATCTCAGAAGAGGATCTGGCAGCAAATGATATCCTGGATT
 ACAAGGATGACGACGATAAGGTTTAA

Protein Sequence:

>RC225696 representing NM_001126242
 Red=Cloning site Green=Tags(s)

MLYVGDPARHLATAQFNLLSSTMDQMSSRAASAPYTPEHAASVPTHSPYAQPSSTFDTMSPAPVIPSNT
 DYPGPHHFEVTFQSSSTAKSATWTYSPLLKKLYCQIAKTCPIQIKVSTPPPPGTAIRAMPVYKKAHVTD
 VVKRCPNHELGRDFNEGQSAPASHLIRVEGNNLSQYVDDPVTGRQSVVVPYEPQVGTEFTTILYNFMCN
 SSCVGGMNRRPILIIITLEMRDQVLGRRSFEGRICACPGDRKADHDHYREQQALNESSAKNGAASKRA
 FKQSPPAVPALGAGVKKRRHGDEDTYYLQVRGRENFEILMKLKESLELMELVPQPLVDSYRQQQLLQRP
 PRDAQQPWPRSASQRRDEQQPQRPVHGLGVPLHSATPLPRRPQPRQFFNRIGVSKLHRVHFLPRVTEHLP
 PAEPDH

TRTRPLE**QKLISEEDLA**AND**ILDYKDDDDKV**

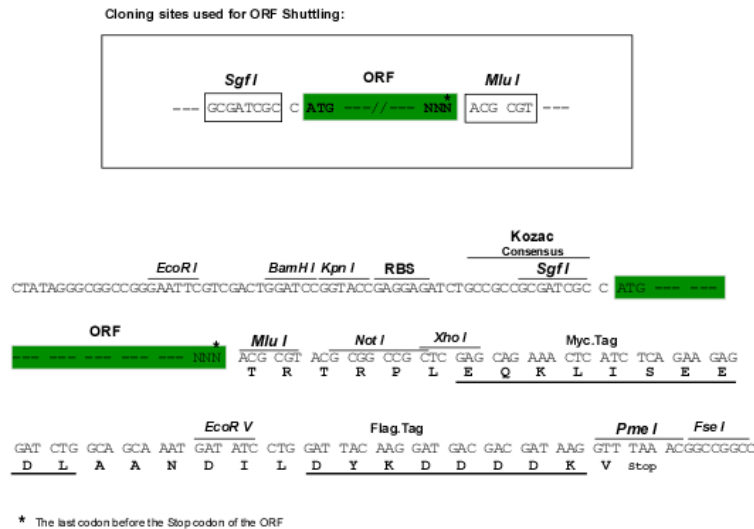
Chromatograms:

https://cdn.origene.com/chromatograms/mk8059_a08.zip

Restriction Sites:

SgfI-MluI

Cloning Scheme:



ACCN: NM_001126242

ORF Size: 1278 bp

OTI Disclaimer: Due to the inherent nature of this plasmid, standard methods to replicate additional amounts of DNA in E. coli are highly likely to result in mutations and/or rearrangements. Therefore, OriGene does not guarantee the capability to replicate this plasmid DNA. Additional amounts of DNA can be purchased from OriGene with batch-specific, full-sequence verification at a reduced cost. Please contact our customer care team at custsupport@origene.com or by calling 301.340.3188 option 3 for pricing and delivery.

The molecular sequence of this clone aligns with the gene accession number as a point of reference only. However, individual transcript sequences of the same gene can differ through naturally occurring variations (e.g. polymorphisms), each with its own valid existence. This clone is substantially in agreement with the reference, but a complete review of all prevailing variants is recommended prior to use. [More info](#)

OTI Annotation: This clone was engineered to express the complete ORF with an expression tag. Expression varies depending on the nature of the gene.

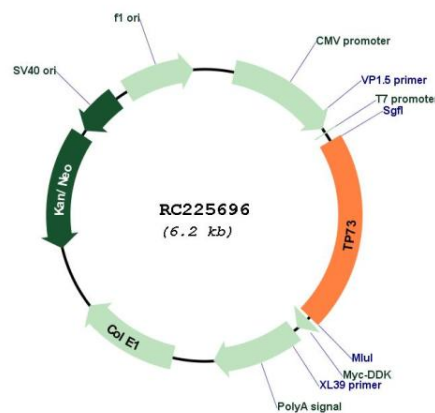
Components: The ORF clone is ion-exchange column purified and shipped in a 2D barcoded Matrix tube containing 10ug of transfection-ready, dried plasmid DNA (reconstitute with 100 ul of water).

Reconstitution Method:

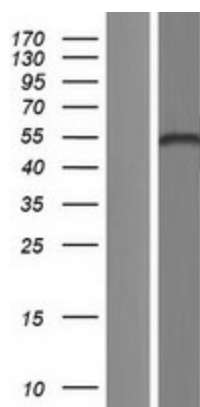
1. Centrifuge at 5,000xg for 5min.
2. Carefully open the tube and add 100ul of sterile water to dissolve the DNA.
3. Close the tube and incubate for 10 minutes at room temperature.
4. Briefly vortex the tube and then do a quick spin (less than 5000xg) to concentrate the liquid at the bottom.
5. Store the suspended plasmid at -20°C. The DNA is stable for at least one year from date of shipping when stored at -20°C.

Note:	Plasmids are not sterile. For experiments where strict sterility is required, filtration with 0.22um filter is required.
RefSeq:	NM_001126242.3
RefSeq ORF:	1281 bp
Locus ID:	7161
UniProt ID:	O15350
Cytogenetics:	1p36.32
Protein Families:	Druggable Genome, Transcription Factors
Protein Pathways:	Neurotrophin signaling pathway, p53 signaling pathway
MW:	47.5 kDa
Gene Summary:	This gene encodes a member of the p53 family of transcription factors involved in cellular responses to stress and development. It maps to a region on chromosome 1p36 that is frequently deleted in neuroblastoma and other tumors, and thought to contain multiple tumor suppressor genes. The demonstration that this gene is monoallelically expressed (likely from the maternal allele), supports the notion that it is a candidate gene for neuroblastoma. Many transcript variants resulting from alternative splicing and/or use of alternate promoters have been found for this gene, but the biological validity and the full-length nature of some variants have not been determined. [provided by RefSeq, Feb 2011]

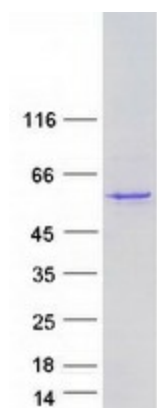
Product images:



Circular map for RC225696



Western blot validation of overexpression lysate (Cat# [LY426670]) using anti-DDK antibody (Cat# [TA50011-100]). Left: Cell lysates from untransfected HEK293T cells; Right: Cell lysates from HEK293T cells transfected with RC225696 using transfection reagent MegaTran 2.0 (Cat# [TT210002]).



Coomassie blue staining of purified TP73 protein (Cat# [TP325696]). The protein was produced from HEK293T cells transfected with TP73 cDNA clone (Cat# RC225696) using MegaTran 2.0 (Cat# [TT210002]).