

Product datasheet for RC225692

Paxillin (PXN) (NM_025157) Human Tagged ORF Clone

Product data:

Product Type:	Expression Plasmids
Product Name:	Paxillin (PXN) (NM_025157) Human Tagged ORF Clone
Tag:	Myc-DDK
Symbol:	Paxillin
Mammalian Cell Selection:	Neomycin
Vector:	pCMV6-Entry (PS100001)
E. coli Selection:	Kanamycin (25 ug/mL)
ORF Nucleotide Sequence:	>RC225692 representing NM_025157 Red=Cloning site Blue=ORF Green=Tags(s)

TTTTGTAATACGACTCACTATAGGGCGGCCGGAATTCGTCGACTGGATCCGGTACCGAGGAGATCTGCCGCCGCGATCGCC

ATGAGCACGTCCCTGGGCAGCAACCTTTCTGAACTCGACCGCCTGCTGCTGGAAGTGAACGCTGTACAGC
ATAACCCGCCAGGCTTCCTGCAGATGAGGCCAACTCAAGCCCCCGCTTCTGGGGCCCTGAGCCCCCT
CTATGGTGTCCCAGAGACTAACAGCCCCTTGGGAGGCAAAGCTGGGCCCTGACGAAAGAGAAGCCTAAG
CGGAATGGGGCCGGGGCTGGAGGACGTGCGGCCAGTGTGGAGAGTCTCTTGGATGAACTGGAGAGCT
CCGTGCCAGCCCCGTCCTGCCATCACTGTGAACAGGGCGAGATGAGCAGCCCCGACGGCTCACCTC
CACCCAACAGCAGACACGCATCTCGGCCTCTGCCACAGGGAGCTGGACGAGCTGATGGCTTCGCTG
TCGGATTTCAAGTTCATGGCCCAGGGGAAGACAGGGAGCAGCTCACCCCTGGGGGGCCCCGAAGCCCG
GGAGCCAGCTGGACAGCATGCTGGGAGCCTGCAGTCTGACCTGAACAAGCTGGGGTCCGCACAGTCGC
CAAAGGAGTCTGCGGGCCTGCAAGAAGCCATCGCCGGCAGGTTGTGACCGCCATGGGAAGACGTGG
CACCCGAGCACTTCGTCTGCACCCACTGCCAGGAGGATCGGATCCCGGAACTTCTTCGAGCGGGATG
GACAGCCCTACTGTGAAAAGGACTACCACAACCTTTCTCCCGCGCTGCTACTACTGCAACGGCCCCAT
CCTGGATAAAGTGGTGACAGCCCTTGACCGACGTGGCACCTGAACACTTCTTCTGTGCACAGTGTGGA
GCCTTCTTTGGTCCCGAAGGGTCCACGAGAAGGACGGCAAGGCCTACTGTCGAAAGGACTACTTCGACA
TGTTTCGACCCAAGTGTGGCGGCTGCGCCCGGCCATCCTGGAGAATATATCTCAGCCCTCAACACGCT
GTGGCATCCTGAGTGCTTTGTGTGCCGGGAATGCTTACGCCATTCGTGAACGGCAGCTTCTTCGAGCAC
GACGGGACGCCCTACTGTGAGGTGCACTACCACGAGCGCGCGGCTCGCTGTGTTCTGGCTGCCAGAAGC
CCATCACCGCGCCTGCATCACCGCCATGGCCAAGAAGTCCACCCCGAGCACTTCGTCTGTGCCTTCTG
CCTCAAGCAGCTCAACAAGGGCACCTTCAAGGAGCAGAACGACAAGCCTTACTGTGCAAGTCTTCTCTC
AAGCTCTTCTGC

ACGCGTACGCGGCCGCTCGAGCAGAACTCATCTCAGAAGAGGATCTGGCAGCAAATGATATCTGGATT
ACAAGGATGACGACGATAAGGTTTAA



Protein Sequence: >RC225692 representing NM_025157
Red=Cloning site Green=Tags(s)

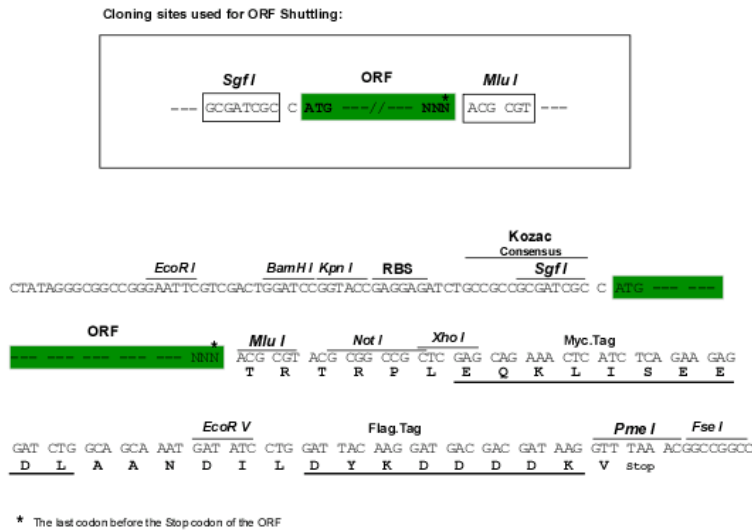
MSTSLGSNLSELDRLLELNAVQHNPFGPADEANSSPPLPGALSPLYGVPETNSPLGGKAGPLTKEKPK
 RNGGRGLEDVRPSVESLLEDELESSVPSVPAITVNOGEMSSPQRVTSTQQQTRISASSATRELMASL
 SDFKFMAQGKTGSSSPPGGPPKPGSQLDSMLGSLQSDLNKLGVATVAKGVCGACKKPIAGQVVTAMGKTW
 HPEHFVCTHCQEEIGSRNFFERDQPYCEKDYHNLFSRPCYYCNGPILDKVVTALDRTWHPEHFFCAQCQ
 AFFGPEGFHEKDGKAYCRKDYDFDMFAPKCGGCARAIENYISALNTLWHPECFVCRECFTPFVNGSFFEH
 DGOPYCEVHYHERRGSLCSGCQKPIITGRCITAMAKKFHPEHFVCAFLCLKQLNKGTFKEQNDKPYCQNCFL
 KLFC

TRTRPLEQKLISEEDLAANDILDYKDDDDKV

Chromatograms: https://cdn.origene.com/chromatograms/mk8058_h12.zip

Restriction Sites: SgfI-MluI

Cloning Scheme:



ACCN: NM_025157

ORF Size: 1272 bp

OTI Disclaimer: The molecular sequence of this clone aligns with the gene accession number as a point of reference only. However, individual transcript sequences of the same gene can differ through naturally occurring variations (e.g. polymorphisms), each with its own valid existence. This clone is substantially in agreement with the reference, but a complete review of all prevailing variants is recommended prior to use. [More info](#)

OTI Annotation: This clone was engineered to express the complete ORF with an expression tag. Expression varies depending on the nature of the gene.

Components: The ORF clone is ion-exchange column purified and shipped in a 2D barcoded Matrix tube containing 10ug of transfection-ready, dried plasmid DNA (reconstitute with 100 ul of water).

Reconstitution Method:

1. Centrifuge at 5,000xg for 5min.
2. Carefully open the tube and add 100ul of sterile water to dissolve the DNA.
3. Close the tube and incubate for 10 minutes at room temperature.
4. Briefly vortex the tube and then do a quick spin (less than 5000xg) to concentrate the liquid at the bottom.
5. Store the suspended plasmid at -20°C. The DNA is stable for at least one year from date of shipping when stored at -20°C.

RefSeq: [NM_025157.5](#)

RefSeq ORF: 1275 bp

Locus ID: 5829

UniProt ID: [P49023](#)

Cytogenetics: 12q24.23

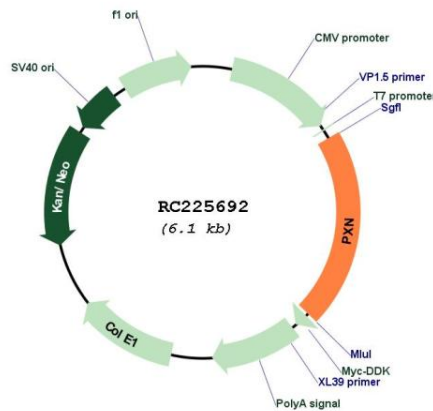
Protein Families: Druggable Genome, Stem cell - Pluripotency

Protein Pathways: Chemokine signaling pathway, Focal adhesion, Leukocyte transendothelial migration, Regulation of actin cytoskeleton, VEGF signaling pathway

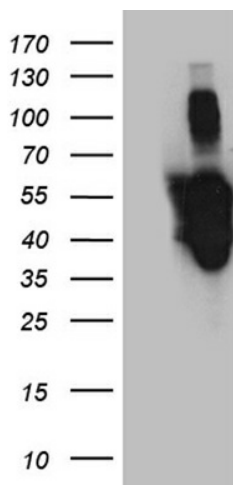
MW: 46.4 kDa

Gene Summary: This gene encodes a cytoskeletal protein involved in actin-membrane attachment at sites of cell adhesion to the extracellular matrix (focal adhesion). Alternatively spliced transcript variants encoding different isoforms have been described for this gene. These isoforms exhibit different expression pattern, and have different biochemical, as well as physiological properties (PMID:9054445). [provided by RefSeq, Aug 2011]

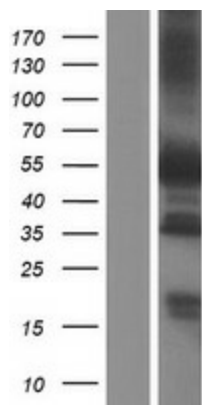
Product images:



Circular map for RC225692



HEK293T cells were transfected with the pCMV6-ENTRY control (Cat# [PS100001], Left lane) or pCMV6-ENTRY PXN (Cat# RC225692, Right lane) cDNA for 48 hrs and lysed. Equivalent amounts of cell lysates (5 ug per lane) were separated by SDS-PAGE and immunoblotted with anti-PXN (Cat# [TA811256])(1:2000). Positive lysates [LY429750] (100ug) and [LC429750] (20ug) can be purchased separately from OriGene.



Western blot validation of overexpression lysate (Cat# [LY429750]) using anti-DDK antibody (Cat# [TA50011-100]). Left: Cell lysates from untransfected HEK293T cells; Right: Cell lysates from HEK293T cells transfected with RC225692 using transfection reagent MegaTran 2.0 (Cat# [TT210002]).