

## Product datasheet for **RC225690**

### CHST8 (NM\_001127896) Human Tagged ORF Clone

#### Product data:

Product Type:	Expression Plasmids
Product Name:	CHST8 (NM_001127896) Human Tagged ORF Clone
Tag:	Myc-DDK
Symbol:	CHST8
Synonyms:	GaINAc4ST; GALNAC4ST1; PSS3
Mammalian Cell Selection:	Neomycin
Vector:	pCMV6-Entry (PS100001)
E. coli Selection:	Kanamycin (25 ug/mL)



[View online »](#)

ORF Nucleotide  
Sequence:

>RC225690 ORF sequence  
Red=Cloning site Blue=ORF Green=Tags(s)

TTTTGTAATACGACTCACTATAGGGCGGCCGGAATTCGTCGACTGGATCCGGTACCGAGGAGATCTGCC  
GCCGCGATCGCC

ATGACCCTGCGACCTGGAACAATGCGGCTGGCCTGCATGTTCTTCCATCCTGCTGTTCCGAGCTGCAG  
GCCTCCTCCTTTCATCAGCCTGCAGGACCTACGGAGCTCGCCCCCAGCAGGTGCCAGGAATAAAGTT  
CAACATCAGGCCAAGGCAGCCCCACCACGACTCCACCAGGCGGCTCCAGGATGGTGACTTGAAGGAA  
CCCACAGAGAGGGTCACTCGGGACTTATCCAGTGGGGCCCCGAGGGGCGCAACCTGCCAGCGCCTGACC  
AGCCTCAACCCCGCTGCAGAGGGGAACCCGTCTGCGGCTCCGCCAGCGCCGTGCGCGTCTGCTCATCAA  
GAAATGCCAGCTGCGGCGACCATCCCGGCCAACAGCTCGGACGCGCCCTTCATCCGCGCCGGACCCGGG  
ACGCTGGATGGCCGCTGGGTGAGCTGCACCGGAGCCAGCAGGAGCGCAAGCGGGTATGCAGGAGGCT  
GCGCCAAGTACCGGGCGAGCAGCAGCCCGGGCCGTACGCCCCGCCACGTGTCCCGTATCTTCGTGGA  
GGACCGCCACCGGTGCTCTACTGCGAGGTGCCAAGGCCGGTCTCCAATTGGAAGCGGGTGTCTATG  
GTGCTGGCCGGCCTGGCCTCGTCCACTGCGGACATCCAGCACAACACCGTCCACTATGGCAGCGCTCTCA  
AGCGCCTGGACACCTTCGACCGCAGGGTATCTTGACCGTCTCAGCACCTACACCAAGATGCTCTTTGT  
CCGCGAGCCCTTCGAGAGGCTGGTGTCCGCCTTCGCGCAAGTTTGGACACCCCAACAGCTACTATCAC  
CCGGTCTTCGGAAGGCCATCCTGGCCCGTACCGCGCAATGCCTCTCGGGAGGCCCTGCGGACCCGGT  
CTGGGGTGCCTTTCCCGAGTTCGTCCAGTACCTGCTGGACGTGCACCGCCCGTGGGGATGGACATTCA  
CTGGGACCATGTCAGCCGGCTCTGCAGCCCTGCCTCATCGACTACGATTCGTAGGCAAGTTCGAGAGC  
ATGGAGGACGATGCCAATTCTTCTGAGCCTCATCCGCGCGCCGCGAACCTGACCTTCCCCCGGTTCA  
AGGACCGGCACTGCAGGAGGCGCGGACCACAGCGAGGATCGCCACCAGTACTTCGCCCAACTCTCGGC  
CCTGCAAAGGCAGCGCACCTACGACTTCTACTACATGGATTACCTGATGTTCAACTATCCAAGCCCTTT  
GCAGATCTGTAC

ACGCGTACGCGGCCGCTCGAGCAGAACTCATCTCAGAAGAGGATCTGGCAGCAATGATATCCTGGATT  
ACAAGGATGACGACGATAAGGTTTAA

## Protein Sequence:

>RC225690 protein sequence  
Red=Cloning site Green=Tags(s)

MTLRPGTMRLACMFSSILLFGAAGLLLFISLQDPTELAPQQVPGIKFNIRPRQPHHDLPPGGSQDGLKE  
PTERVTRDLSSGAPRGRNLPAPDQPQPPLQRGTRLRLRQRRRLLIKKMPAAATIPANSSDAPFIRPGPG  
TLDGRWVSLHRSQQRKRVMQEACAKYRASSRRAVTPRHVSRIFFEDRHRVLYCEVPKAGCSNWKRVLM  
VLAGLASSTADIQHNTVHYGSALKRLDTFDRQILHRLSTYTKMLFVREPFERLVSAFRDKFEHPNSYYH  
PVFGKAILARYRANASREALRTGSGVRFPEFVQYLLDVHRPVGMDIHWHDVSRCLCSPCLIDYDFVKGKES  
MEDDANFFLSLIRAPRNLTFPRFKDRHSQEARTTARIAHQYFAQLSALQRQRTYDFYYMDYLMFNYSKPF  
ADLY

TRTRPLEQKLISEEDLAANDILDYKDDDDKV

## Chromatograms:

[https://cdn.origene.com/chromatograms/mk6433\\_f12.zip](https://cdn.origene.com/chromatograms/mk6433_f12.zip)

## Restriction Sites:

SgfI-MluI

**Cloning Scheme:**


**ACCN:** NM\_001127896

**ORF Size:** 1272 bp

**OTI Disclaimer:** The molecular sequence of this clone aligns with the gene accession number as a point of reference only. However, individual transcript sequences of the same gene can differ through naturally occurring variations (e.g. polymorphisms), each with its own valid existence. This clone is substantially in agreement with the reference, but a complete review of all prevailing variants is recommended prior to use. [More info](#)

**OTI Annotation:** This clone was engineered to express the complete ORF with an expression tag. Expression varies depending on the nature of the gene.

**Components:** The ORF clone is ion-exchange column purified and shipped in a 2D barcoded Matrix tube containing 10ug of transfection-ready, dried plasmid DNA (reconstitute with 100 ul of water).

**Reconstitution Method:**

1. Centrifuge at 5,000xg for 5min.
2. Carefully open the tube and add 100ul of sterile water to dissolve the DNA.
3. Close the tube and incubate for 10 minutes at room temperature.
4. Briefly vortex the tube and then do a quick spin (less than 5000xg) to concentrate the liquid at the bottom.
5. Store the suspended plasmid at -20°C. The DNA is stable for at least one year from date of shipping when stored at -20°C.

**RefSeq:** [NM\\_001127896.2](#)

**RefSeq Size:** 2251 bp

**RefSeq ORF:** 1275 bp

**Locus ID:** 64377

**UniProt ID:** [Q9H2A9](#)

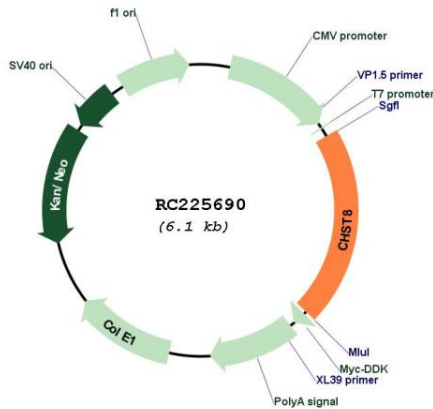
**Cytogenetics:** 19q13.11

**Protein Families:** Transmembrane

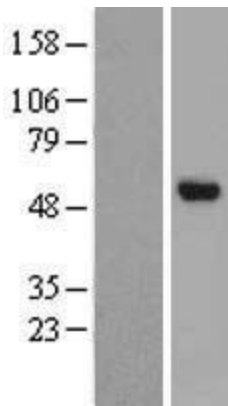
**MW:** 48.8 kDa

**Gene Summary:** The protein encoded by this gene belongs to the sulfotransferase 2 family. It is predominantly expressed in the pituitary gland, and is localized to the golgi membrane. This protein catalyzes the transfer of sulfate to position 4 of non-reducing N-acetylgalactosamine (GalNAc) residues in both N-glycans and O-glycans. It is responsible for sulfation of GalNAc on luteinizing hormone (LH), which is required for production of the sex hormones. Mice lacking this enzyme, exhibit increased levels of circulating LH, and precocious sexual maturation of both male and female mice. Alternatively spliced transcript variants have been found for this gene. [provided by RefSeq, Aug 2011]

**Product images:**



Circular map for RC225690



Western blot validation of overexpression lysate (Cat# [LY426882]) using anti-DDK antibody (Cat# [TA50011-100]). Left: Cell lysates from untransfected HEK293T cells; Right: Cell lysates from HEK293T cells transfected with RC225690 using transfection reagent MegaTran 2.0 (Cat# [TT210002]).