

Product datasheet for **RC225689**

CHST8 (NM_001127895) Human Tagged ORF Clone

Product data:

Product Type:	Expression Plasmids
Product Name:	CHST8 (NM_001127895) Human Tagged ORF Clone
Tag:	Myc-DDK
Symbol:	CHST8
Synonyms:	GaINAc4ST; GALNAC4ST1; PSS3
Mammalian Cell Selection:	Neomycin
Vector:	pCMV6-Entry (PS100001)
E. coli Selection:	Kanamycin (25 ug/mL)



[View online »](#)

ORF Nucleotide Sequence:

>RC225689 ORF sequence
 Red=Cloning site Blue=ORF Green=Tags(s)

TTTTGTAATACGACTCACTATAGGGCGGCCGGGAATTCGTCGACTGGATCCGGTACCGAGGAGATCTGCC
 GCC**GCGATCGCC**

ATGACCCTGCGACCTGGAACAATGCGGCTGGCCTGCATGTTCTTCCATCCTGCTGTTCCGAGCTGCAG
 GCCTCCTCCTTTCATCAGCCTGCAGGACCTACGGAGCTCGCCCCAGCAGGTGCCAGGAATAAAGTT
 CAACATCAGGCCAAGGCAGCCCCACCACGACTCCACCAGGCGGCTCCAGGATGGTGACTTGAAGGAA
 CCCACAGAGAGGGTCACTCGGGACTTATCCAGTGGGGCCCCGAGGGGCGCAACCTGCCAGCGCCTGACC
 AGCCTCAACCCCCGCTGCAGAGGGGAACCCGCTCTGCGGCTCCGCCAGCGCCGTCGCGTCTGCTCATCA
 GAAATGCCAGCTGCGGCGACCATCCCGGCCAACAGCTCGGACGCGCCCTTCATCCGGCCGGGACCCGGG
 ACGCTGGATGGCCGCTGGGTGAGCTGCACCGGAGCCAGCAGGAGCGCAAGCGGGTATGCAGGAGGCT
 GCGCCAAGTACCGGGCGAGCAGCCGCGGGCCGTCACGCCCCGCCACGTGTCCCGTATCTTCGTGGA
 GGACCGCCACCGGTGCTCTACTGCGAGGTGCCAAGGCCGGCTGCTCCAATTGGAAGCGGGTGTCTATG
 GTGCTGGCCGGCCTGGCCTCGTCCACTGCGACATCCAGCACAACACCGTCCACTATGGCAGCGCTCTCA
 AGCGCCTGGACACCTTCGACCGCAGGGTATCTTGACCGTCTCAGCACCTACACCAAGATGCTCTTTGT
 CCGCGAGCCCTTCGAGAGGCTGGTGTCCGCCTTCGCGACAAGTTTGAGCACCCCAACAGCTACTATCAC
 CCGGTCTTCGGCAAGGCCATCCTGGCCCGTACCGCGCCAATGCCTCTCGGGAGGCCCTGCGGACCCGGT
 CTGGGGTGCCTTTCCCGAGTTCGTCCAGTACCTGCTGGACGTGCACCGGCCCGTGGGGATGGACATTCA
 CTGGGACCATGTCAGCCGGCTCTGCAGCCCCTGCCTCATCGACTACGATTCGTAGGCAAGTTCGAGAGC
 ATGGAGGACGATGCCAATTCTTCTGAGCCTCATCCGCGCGCCGCGAACCTGACCTTCCCCGGTTCA
 AGGACCGGCACTGCAGGAGGCGCGACCACAGCGAGGATCGCCACCAGTACTTCGCCCAACTCTCGGC
 CCTGCAAAGGCAGCGCACCTACGACTTCTACTACATGGATTACCTGATGTTCAACTATTCGAAGCCCTTT
 GCAGATCTGTAC

ACGCGTACGCGGCCGCTCGAGCAGAACTCATCTCAGAAGAGGATCTGGCAGCAAATGATATCCTGGATT
 ACAAGGATGACGACGATAAGGTTTAA

Protein Sequence:

>RC225689 protein sequence
 Red=Cloning site Green=Tags(s)

MTLRPGTMRLACMFSSILLFGAAGLLLFISLQDPTLAPQQVPGIKFNIRPRQPHHDLPPGGSQDGLKE
 PTERVTRDLSSGAPRGRNLPAPDQPQPPLQRGTRLRLRQRRRLLIKKMPAAATIPANSSDAPFIRPGPG
 TLDGRWVSLHRSQQRKRVMQEACAKYRASSRRAVTPRHVSRIFFEDRHRVLYCEVPKAGCSNWKRVLM
 VLAGLASSTADIQHNTVHYGSALKRLDTFDRQILHRLSTYTKMLFVREPFERLVSAFRDKFEHPNSYYH
 PVFGKAILARYRANASREALRTGSGVRFPEFVQYLLDVHRPVGMDIHWHDVSRCLCSPCLIDYDFVKGKES
 MEDDANFFLSLIRAPRNLTFPRFKDRHSQEARTTARIAHQYFAQLSALQRQRTYDFYYMDYLMFNYSKPF
 ADLY

TRTRPLEQKLISEEDLAANDILDYKDDDDKV

Chromatograms:

https://cdn.origene.com/chromatograms/mk6433_f12.zip

Restriction Sites:

SgfI-MluI

Cloning Scheme:


ACCN: NM_001127895

ORF Size: 1272 bp

OTI Disclaimer: The molecular sequence of this clone aligns with the gene accession number as a point of reference only. However, individual transcript sequences of the same gene can differ through naturally occurring variations (e.g. polymorphisms), each with its own valid existence. This clone is substantially in agreement with the reference, but a complete review of all prevailing variants is recommended prior to use. [More info](#)

OTI Annotation: This clone was engineered to express the complete ORF with an expression tag. Expression varies depending on the nature of the gene.

Components: The ORF clone is ion-exchange column purified and shipped in a 2D barcoded Matrix tube containing 10ug of transfection-ready, dried plasmid DNA (reconstitute with 100 ul of water).

Reconstitution Method:

1. Centrifuge at 5,000xg for 5min.
2. Carefully open the tube and add 100ul of sterile water to dissolve the DNA.
3. Close the tube and incubate for 10 minutes at room temperature.
4. Briefly vortex the tube and then do a quick spin (less than 5000xg) to concentrate the liquid at the bottom.
5. Store the suspended plasmid at -20°C. The DNA is stable for at least one year from date of shipping when stored at -20°C.

RefSeq: [NM_001127895.1](#), [NP_001121367.1](#)

RefSeq Size: 2340 bp

RefSeq ORF: 1275 bp

Locus ID: 64377

UniProt ID: [Q9H2A9](#)

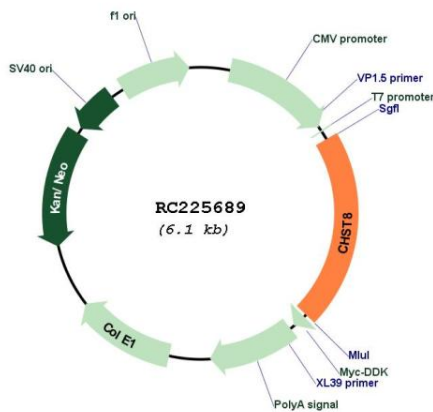
Cytogenetics: 19q13.11

Protein Families: Transmembrane

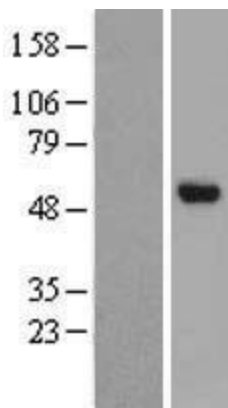
MW: 48.8 kDa

Gene Summary: The protein encoded by this gene belongs to the sulfotransferase 2 family. It is predominantly expressed in the pituitary gland, and is localized to the golgi membrane. This protein catalyzes the transfer of sulfate to position 4 of non-reducing N-acetylgalactosamine (GalNAc) residues in both N-glycans and O-glycans. It is responsible for sulfation of GalNAc on luteinizing hormone (LH), which is required for production of the sex hormones. Mice lacking this enzyme, exhibit increased levels of circulating LH, and precocious sexual maturation of both male and female mice. Alternatively spliced transcript variants have been found for this gene. [provided by RefSeq, Aug 2011]

Product images:



Circular map for RC225689



Western blot validation of overexpression lysate (Cat# [LY426882]) using anti-DDK antibody (Cat# [TA50011-100]). Left: Cell lysates from untransfected HEK293T cells; Right: Cell lysates from HEK293T cells transfected with [RC225690] using transfection reagent MegaTran 2.0 (Cat# [TT210002]).