

## Product datasheet for RC225688

### SERPINE3 (NM\_001101320) Human Tagged ORF Clone

#### Product data:

Product Type:	Expression Plasmids
Product Name:	SERPINE3 (NM_001101320) Human Tagged ORF Clone
Tag:	Myc-DDK
Symbol:	SERPINE3
Mammalian Cell Selection:	Neomycin
Vector:	pCMV6-Entry (PS100001)
E. coli Selection:	Kanamycin (25 ug/mL)
ORF Nucleotide Sequence:	>RC225688 representing NM_001101320 Red=Cloning site Blue=ORF Green=Tags(s)

TTTTGTAATACGACTCACTATAGGGCGGCCGGAATTCGTCGACTGGATCCGGTACCGAGGAGATCTGCCGCCCGATCGCC

ATGCCGCTTTCCTGATCACCTCTTCCTTTCACTCTTGTGCCTCCGAGCAAATGGCCACCTCCGTG  
AAGGAATGACATTGCTGAAGACTGAGTTTGACTTCACCTCTACCAGAGTGTGGCCGCGTGTAGAAATGA  
GACGAACCTTGTGATCTCTCTGCTGGTGTGTCCCTCCCCTGGAGATCCTGCAGTTTGGAGCAGAAGGG  
AGCACTGGTCAGCAGCTGGCAGATGCCCTGGGGTACACTGTCCATGACAAAAGGGTAAAAGATTTCTTGC  
ATGCTGTTTATGCCACACTACCCACTCCAGCCAAGGCACCGAGATGGAGCTGGCCTGCAGCCTTTTGTG  
GCAAGTGGGAACGCCACTGTCCCCTGTCTTGTGGAGCAGTCTCCTGGTGGGCTAACAGCAGCCTGGAA  
CCAGCCGACCTCAGTGAGCCCAATAGCACCGCCATCCAGACTAGCGAAGGGGCTCCAGAGAGACTGCAG  
GTGGGGGCCCCAGTGAGGGCCCTGGTGGCTGGCCGTGGGAGCAAGTCAGTGCAGCATTGCTCAGCTTGT  
GCTTGTGAGCACCATGTCCTTCCAAGGCACTTGGCGAAAGAGATTCTCCTCCACAGACACAGATCCTG  
CCTTTCACCTGTGCTATGGCCTCGTCTTCAGGTCCCCATGATGCACCAAACGACCGAGGTCAACTACG  
GTCAGTCCAGGACACTGCAGGCCATCAGGTGGGGTGTGGAGCTTCTTACCTGGGAAGTGCAGTGAG  
TCTGTTCTGGTGTGCCCGTGACAAAGACACCCCTGAGCCACATCGAGCCACACCTCACAGCCAGC  
ACCATCCACCTCTGGACCACCAGCCTGAGGAGAGCCAGGATGGATGTGTTCTGCCAGGTTTAGGATCC  
AAAATCAATCAACTTAAAAGCATTTTAAATTCTTGGGGAGTCAACGATCTTTTGGATCCACTCAAAGC  
TAACTTGAAGGAATTTAGGCCAAGATGGCTTTTATGTTTCTGAAGCAATCCACAAGGCCAAGATTGAA  
GTTTTGGAGGAAGGCACCAAGGCATCTGGAGCCACAGCTCTGTTGTTATTGAAAAGGTCTCGGATTCCTA  
TTTTTAAAGCAGATCGGCCATTCATCTATTTCTGAGAGAACCTAACACAGGTATTACAGTATTTTTTGA  
CAGGATTCAGATAATTTATCAGTGTCTCTAGCAACAAGGGCTCATTTGTCCACTATCCCCTCAAAAT  
AAGATTCTTTC

ACGCGTACGCGGCCGCTCGAGCAGAACTCATCTCAGAAGAGGATCTGGCAGCAAATGATATCCTGGATT  
ACAAGGATGACGACGATAAGGTTTAA



**Protein Sequence:** >RC225688 representing NM\_001101320  
Red=Cloning site Green=Tags(s)

MPPFLITLFLFHSCCLRANGHLREGMTLLKTEFALHLYQSVAAACRNENFVISPAGVSLPLEILQFGAEG  
 STGQQLADALGYTVHDKRVKDFLHAVYATLPTSSQGTEMELACSLFVQVGTPLSPCFVEHVSWWANSLE  
 PADLSEPNSTAIQTSEGASRETAGGGPSEGPGGWPWEQVSAAFQVLVSTMSFQGTWRKRFSSDQTQIL  
 PFTCAYGLVLQVPMHQTEVNYGQFQDTAGHQVGVLELPLYLGSVSLFLVLPDKDTPLSHIEPHLTAS  
 TIHLWTTSLRRARMDVFLPRFRIQNQFNLSILNSWGVTDLFDPLKANLKGISGQDGFYVSEAIHKAKIE  
 VLEEGTKASGATALLLLKRSRIPFKADRPFIYFLREPNTGITVFFDRIQIIYQCLSSNKGSFVHYPLKN  
 KHSF

TRTRPLEQKLISEEDLAANDILDYKDDDDKV

**Chromatograms:** [https://cdn.origene.com/chromatograms/mk8034\\_g05.zip](https://cdn.origene.com/chromatograms/mk8034_g05.zip)

**Restriction Sites:** SgfI-MluI

**Cloning Scheme:**



**ACCN:** NM\_001101320

**ORF Size:** 1272 bp

**OTI Disclaimer:** The molecular sequence of this clone aligns with the gene accession number as a point of reference only. However, individual transcript sequences of the same gene can differ through naturally occurring variations (e.g. polymorphisms), each with its own valid existence. This clone is substantially in agreement with the reference, but a complete review of all prevailing variants is recommended prior to use. [More info](#)

**OTI Annotation:** This clone was engineered to express the complete ORF with an expression tag. Expression varies depending on the nature of the gene.

**Components:** The ORF clone is ion-exchange column purified and shipped in a 2D barcoded Matrix tube containing 10ug of transfection-ready, dried plasmid DNA (reconstitute with 100 ul of water).

- Reconstitution Method:**
1. Centrifuge at 5,000xg for 5min.
  2. Carefully open the tube and add 100ul of sterile water to dissolve the DNA.
  3. Close the tube and incubate for 10 minutes at room temperature.
  4. Briefly vortex the tube and then do a quick spin (less than 5000xg) to concentrate the liquid at the bottom.
  5. Store the suspended plasmid at -20°C. The DNA is stable for at least one year from date of shipping when stored at -20°C.

**RefSeq:** NM\_001101320.1, NP\_001094790.1

**RefSeq ORF:** 1275 bp

**Locus ID:** 647174

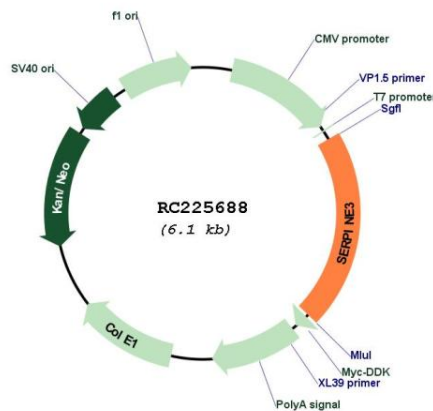
**UniProt ID:** A8MV23

**Cytogenetics:** 13q14.3

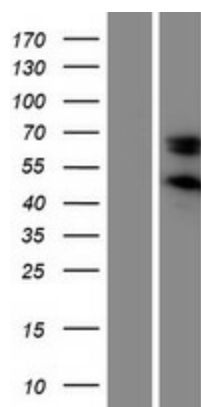
**MW:** 46.8 kDa

**Gene Summary:** Probable serine protease inhibitor.[UniProtKB/Swiss-Prot Function]

**Product images:**



Circular map for RC225688



Western blot validation of overexpression lysate (Cat# [LY426134]) using anti-DDK antibody (Cat# [TA50011-100]). Left: Cell lysates from untransfected HEK293T cells; Right: Cell lysates from HEK293T cells transfected with RC225688 using transfection reagent MegaTran 2.0 (Cat# [TT210002]).