

Product datasheet for **RC225687**

LRRFIP2 (NM_001134369) Human Tagged ORF Clone

Product data:

Product Type:	Expression Plasmids
Product Name:	LRRFIP2 (NM_001134369) Human Tagged ORF Clone
Tag:	Myc-DDK
Symbol:	LRRFIP2
Synonyms:	HUFI-2
Mammalian Cell Selection:	Neomycin
Vector:	pCMV6-Entry (PS100001)
E. coli Selection:	Kanamycin (25 ug/mL)



[View online »](#)

ORF Nucleotide Sequence:

>RC225687 representing NM_001134369
 Red=Cloning site Blue=ORF Green=Tags(s)

TTTTGTAATACGACTCACTATAGGGCGGCCGGAATTCGTCGACTGGATCCGGTACCGAGGAGATCTGCC
 GCC**CGCATCGCC**

ATGGGGACTCCTGCTTCTGGAAGGAAAAGAACACCTGTGAAAGACCGATTTTCTGCAGAAGATGAAGCTT
 TGAGTAACATTGCCAGAGAGGCAGAGGCAAGGCTGGCAGCAAAACGGGCTGCCCGGCAGAAAGCAAGAGA
 TATACGCATGAGAGAAGTGAACGACAACAAAAAGAGTTGGATGAAAAATCTGACAAACAGTATGCTGAA
 AATTATACAAGACCTTCACTCGAAATTCTGCCTCAGCAACAACCCCTCTAAGTGAAACTCATCCAGAC
 GAGGAAGTGGGGACACCAGCAGCTTAATAGATCCAGACACTTCATTAAGTGAATTGCGGGATATCTATGA
 CCTTAAGGACCAGATACAGGATGTAGAAGGAGATACATGCAGGGGCTTAAAGAACTAAAGGAATCTTTG
 TCTGAAGTGAAGAAAAATACAAGAAAGCCATGGTTTCCAATGCGCAGTTAGACAATGAGAAGAACAATT
 TGATCTACCAAGTAGACACACTCAAGGATGTTATTGAAGAGCAGGAGAACAGATGGCAGAAATTTATAG
 AGAAAATGAAGAAAAATCAAAGGAGTTAGAAAGGCAGAAACATATGTGTAGTGTGCTGCAGCATAAGATG
 GAAGAACTTAAAGAAGGCTGCGGCAAAGAGATGAGCTTATTGAGAAACATGGCTTAGTTATAATCCCCG
 ATGGCACTCCCAATGGTATGTCAGTCATGAACCAAGTGGCTGGAGCCATCACTGTTGTGTCTCAGGAAGC
 TGCTCAGGCTTTGGAGTCAGCAGGAGAAGGGCCATTAGATGTAAGGCTACGAAAACCTTGCTGGAGAGAAG
 GAAGAACTACTGTACAGATTAGAAAACGAAGCTTCAGTTAGAGGAGGAACGACAGAAATGCTCCAGGA
 ATGATGGCACAGTGGGTGACCTGGCAGGACTGCAGAAATGGCTCAGACTTGCAGTTCATCGAAATGCAGAG
 AGATGCCAATAGACAAATAGCGAATACAAATTAAGCTTTCAAAGCAGAACAGGATATAACTACCTTG
 GAGCAAAGTATTAGCCGGCTTGAGGGACAGGTTCTGAGATATAAACTGCTGCTGAGAATGCTGAGAAG
 TTGAAGATGAATTGAAAGCAGAAAAACGGAAGCTACAACGAGAGTTACGAACAGCACTGGACAAGATTGA
 GGAGATGGAGATGACCAACAGCCACCTGGCCAAGCGGCTGGAGAAGATGAAGCCAATAGGACAGCACTT
 CTGGCCAGCAG

ACGCGTACGCGGCCGCTCGAGCAGAAACTCATCTCAGAAGAGGATCTGGCAGCAATGATATCCTGGATT
 ACAAGGATGACGACGATAAGGTTTAA

Protein Sequence:

>RC225687 representing NM_001134369
 Red=Cloning site Green=Tags(s)

MGTPASGRKRTPVKDRFSAEDEALSNIAEAEARLAAKRAARAEARDIRMRELERQQKELDEKSDKQYAE
 NYTRPSSRNSASATTPLSGNSRRGSGDTSSLIDPDTSLSELRDYDLKDQIQDVEGRYMQGLKELKESL
 SEVEEKYKKAMVSNAQLDNEKNNLIYQVDLTKDVIIEEQEEQMAEFYRENEEKSKELERQKHMCSVLQHKM
 EELKEGLRQRDELIEKHGLVIIPDGTPNGDVSHEPVAGAITVVSQEAQVLESAGEGPLDVRLRKLAGEK
 EELLQIRKLLQLEERQKCSRNDGTVDLAGLQNGSDLQFIEMQRDANRQISEYKFKLSKAEQDITTL
 EQSISRLEGQVLRKYKTAENAEEKVEDELKAEKRKLQRELRTALDKIEEMEMTNSHLAKRLEKMKANRTAL
 LAQQ

TRTRPLEQKLISEEDLAANDILDYKDDDDKV

Chromatograms:

https://cdn.origene.com/chromatograms/mk8058_h11.zip

Restriction Sites:

Sgfl-Mlul

Cloning Scheme:


ACCN: NM_001134369

ORF Size: 1272 bp

OTI Disclaimer: The molecular sequence of this clone aligns with the gene accession number as a point of reference only. However, individual transcript sequences of the same gene can differ through naturally occurring variations (e.g. polymorphisms), each with its own valid existence. This clone is substantially in agreement with the reference, but a complete review of all prevailing variants is recommended prior to use. [More info](#)

OTI Annotation: This clone was engineered to express the complete ORF with an expression tag. Expression varies depending on the nature of the gene.

Components: The ORF clone is ion-exchange column purified and shipped in a 2D barcoded Matrix tube containing 10ug of transfection-ready, dried plasmid DNA (reconstitute with 100 ul of water).

Reconstitution Method:

1. Centrifuge at 5,000xg for 5min.
2. Carefully open the tube and add 100ul of sterile water to dissolve the DNA.
3. Close the tube and incubate for 10 minutes at room temperature.
4. Briefly vortex the tube and then do a quick spin (less than 5000xg) to concentrate the liquid at the bottom.
5. Store the suspended plasmid at -20°C. The DNA is stable for at least one year from date of shipping when stored at -20°C.

RefSeq: [NM_001134369.1](#), [NP_001127841.1](#)

RefSeq ORF: 1275 bp

Locus ID: 9209

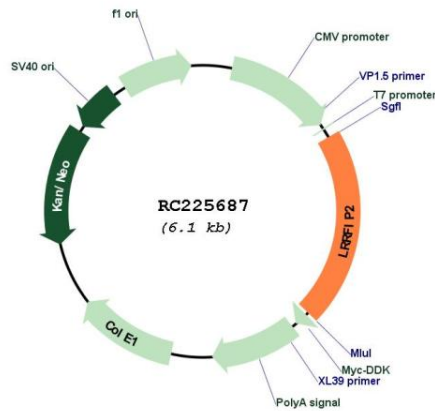
UniProt ID: [Q9Y608](#)

Cytogenetics: 3p22.2

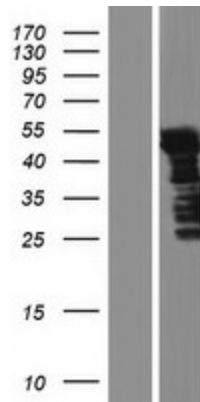
MW: 48.1 kDa

Gene Summary:

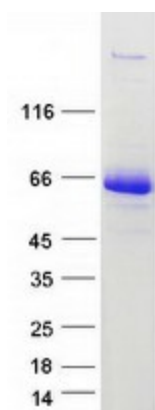
The protein encoded by this gene, along with MYD88, binds to the cytosolic tail of toll-like receptor 4 (TLR4), which results in activation of nuclear factor kappa B signaling. The ubiquitin-like protein FAT10 prevents the interaction of the encoded protein and TLR4, thereby inactivating the nuclear factor kappa B signaling pathway. In addition, this protein can downregulate the NLRP3 inflammasome by recruiting the caspase-1 inhibitor Flightless-1 to the inflammasome complex. [provided by RefSeq, Jan 2017]

Product images:


Circular map for RC225687



Western blot validation of overexpression lysate (Cat# [LY427402]) using anti-DDK antibody (Cat# [TA50011-100]). Left: Cell lysates from untransfected HEK293T cells; Right: Cell lysates from HEK293T cells transfected with RC225687 using transfection reagent MegaTran 2.0 (Cat# [TT210002]).



Coomassie blue staining of purified LRRFIP2 protein (Cat# [TP325687]). The protein was produced from HEK293T cells transfected with LRRFIP2 cDNA clone (Cat# RC225687) using MegaTran 2.0 (Cat# [TT210002]).