

Product datasheet for **RC225685**

RbAp48 (RBBP4) (NM_001135255) Human Tagged ORF Clone

Product data:

Product Type:	Expression Plasmids
Product Name:	RbAp48 (RBBP4) (NM_001135255) Human Tagged ORF Clone
Tag:	Myc-DDK
Symbol:	RBBP4
Synonyms:	lin-53; NURF55; RBAP48
Vector:	pCMV6-Entry (PS100001)
E. coli Selection:	Kanamycin (25 ug/mL)
Cell Selection:	Neomycin
ORF Nucleotide Sequence:	>RC225685 representing NM_001135255 Red=Cloning site Blue=ORF Green=Tags(s)

TTTTGTAATACGACTCACTATAGGGCGCCGGAATTCGTCGACTGGATCCGGTACCGAGGAGATCTGCC
GCC**CGGATCGCC**

ATGGCCGACAAGGAAGCCTTCGACGACGCAGTGAAGAACGAGTGATCAACGAGGAATACAAAATATGGA
AAAAGAACACCCCTTTCTTTATGATTTGGTGATGCCCATGCTCTGGAGTGGCCAGCCTAACTGCCCA
GTGGCTCCAGATGTAACCAGACCAGAAGGAAAGATTTACGATTTCATCGACTTGTCTGGGGACACAC
ACATCGGATGAACAAAACCATCTTGTATAGCCAGTGTGCAGCTCCCTAATGATGATGCTCAGTTTGATG
CGTCACACTACGACAGTGAGAAAGGAGAATTTGGAGGTTTTGGTTCAGTTAGTGGAAAAATTGAAATAGA
AATCAAGATCAACCATGAAGGAGAAGTAAACAGGGCCCGTTATATGCCCCAGAACCCTTGTATCATCGCA
ACAAAGACTCCTTCCAGTGATGTTCTTGTTTTTGACTATACAAAACATCCTTCTAAACCAGATCCTTCTG
GAGAGTGAACCCAGACTTGGCTCTCCGTGGACATCAGAAGGAAGGCTATGGGCTTTCTTGGAACCCAAA
TCTCAGTGGGCACTTACTTAGTGCTTCAGATGACCATACCATCTGCCTGTGGGACATCAGTGCCGTTCCA
AAGGAGGGAAAAGTGGTAGATGCGAAGACCATCTTTACAGGGCATACGGCAGTAGTAGAAGATGTTTCCT
GGCATCTACTCCATGAGTCTCTGTTTGGGTCAGTTGCTGATGATCAGAACTTATGATTTGGGACTCTCG
TTCAAACAATACTTCAAACCAAGCCACTCAGTTGATGCTCACACTGCTGAAGTGAAGTGAAGTCTTTCTTC
AATCCTTATAGTGAGTTCATTCTTGCCACAGGATCAGCTGACAAGACTGTTGCCTTGTGGGATCTGAGAA
ATCTGAAACTTAAGTTGCATTCTTTGAGTCACATAAGGATGAAATATCCAGGTTTCAGTGGTCACTCA
CAATGAGACTATTTAGCTTCCAGTGGTACTGATCGCAGACTGAATGCTGGGATTTAAGTAAAATTGGA
GAGGAACAATCCCAGAAGATGCAGAAGACGGGCCACCAGAGTTGTTGTTTATTCATGGTGGTCATACTG
CCAAGATATCTGATTTCTCCTGGAATCCAATGAACCTTGGGTGATTTGTTCTGTATCAGAAGACAATAT
CATGCAAGTGTGGCAAATGGCAGAGAACATTTAATGATGAAGACCCTGAAGGAAGCGTGGATCCAGAA
GGACAAGGTCC

ACGCGTACGCGGCCGCTCGAGCAGAAACTCATCTCAGAAGAGGATCTGGCAGCAAATGATATCCTGGATT
ACAAGGATGACGACGATAAGGTTTAA



[View online »](#)

Protein Sequence: >RC225685 representing NM_001135255
 Red=Cloning site Green=Tags(s)

MADKEAFDDAVEERVINEEYKIWKNTPFYDLVMTHALEWPSLTAQWLPDVTRPEGKDFSIHRLVLGTH
 TSDEQNHVLVIASVQLPNDDAQFDASHYDSEKGEFGGFSVSGKIEIEIKINHEGEVNRARYMPQNPCI
 IATKTPSSDVLVFDYTKHPSKPDPSGECNPDLRLRGHQKEGYGLSWNPNSLGHLLSASDDHTICLWDI
 SAVPKGKVVDAKTIFTGHTAVVEDVSWHLLHESLFGSVADDQKLMWDTRSNNTSKPSSHVDAHTAEV
 NCLSFNPYSEFILATGSADKTVALWDLRNLKLLKLSHFESHKDEIFQVQWSPHNETILASSGDRRLN
 NVWDLKIGEEQSPEDAEDGPPPELLFIHGHTAKISDFSWNPNEPWVICSVSEDNIMQVWQMAENIY
 NDEDPEGSVDPEGQGS

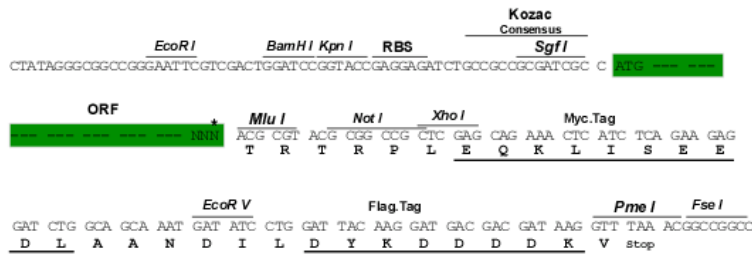
TRTRPLEQKLISEEDLAANDILDYKDDDDKV

Restriction Sites:

SgfI-MluI

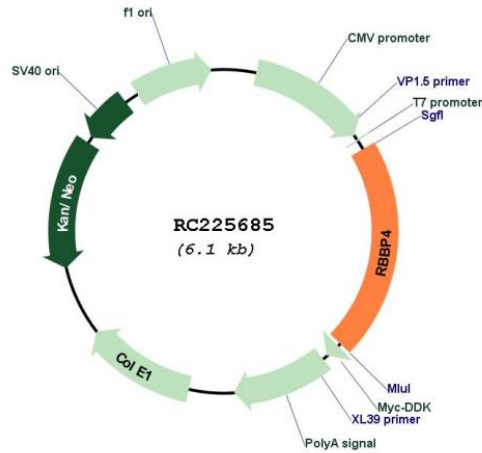
Cloning Scheme:

Cloning sites used for ORF Shuttling:



* The last codon before the Stop codon of the ORF

Plasmid Map:



ACCN:

NM_001135255

ORF Size:	1272 bp
OTI Disclaimer:	The molecular sequence of this clone aligns with the gene accession number as a point of reference only. However, individual transcript sequences of the same gene can differ through naturally occurring variations (e.g. polymorphisms), each with its own valid existence. This clone is substantially in agreement with the reference, but a complete review of all prevailing variants is recommended prior to use. More info
OTI Annotation:	This clone was engineered to express the complete ORF with an expression tag. Expression varies depending on the nature of the gene.
Components:	The ORF clone is ion-exchange column purified and shipped in a 2D barcoded Matrix tube containing 10ug of transfection-ready, dried plasmid DNA (reconstitute with 100 ul of water).
Reconstitution Method:	<ol style="list-style-type: none">1. Centrifuge at 5,000xg for 5min.2. Carefully open the tube and add 100ul of sterile water to dissolve the DNA.3. Close the tube and incubate for 10 minutes at room temperature.4. Briefly vortex the tube and then do a quick spin (less than 5000xg) to concentrate the liquid at the bottom.5. Store the suspended plasmid at -20°C. The DNA is stable for at least one year from date of shipping when stored at -20°C.
RefSeq:	NM_001135255.2
RefSeq Size:	7940 bp
RefSeq ORF:	1275 bp
Locus ID:	5928
UniProt ID:	Q09028
Cytogenetics:	1p35.1
Protein Families:	Druggable Genome, Transcription Factors
MW:	47.6 kDa
Gene Summary:	This gene encodes a ubiquitously expressed nuclear protein which belongs to a highly conserved subfamily of WD-repeat proteins. It is present in protein complexes involved in histone acetylation and chromatin assembly. It is part of the Mi-2 complex which has been implicated in chromatin remodeling and transcriptional repression associated with histone deacetylation. This encoded protein is also part of co-repressor complexes, which is an integral component of transcriptional silencing. It is found among several cellular proteins that bind directly to retinoblastoma protein to regulate cell proliferation. This protein also seems to be involved in transcriptional repression of E2F-responsive genes. Three transcript variants encoding different isoforms have been found for this gene. [provided by RefSeq, Sep 2008]