

Product datasheet for **RC225684**

LIPM (NM_001128215) Human Tagged ORF Clone

Product data:

Product Type:	Expression Plasmids
Product Name:	LIPM (NM_001128215) Human Tagged ORF Clone
Tag:	Myc-DDK
Symbol:	LIPM
Synonyms:	bA304I5.1; LIPL3
Mammalian Cell Selection:	Neomycin
Vector:	pCMV6-Entry (PS100001)
E. coli Selection:	Kanamycin (25 ug/mL)



[View online »](#)

ORF Nucleotide Sequence:

>RC225684 representing NM_001128215
 Red=Cloning site Blue=ORF Green=Tags(s)

TTTTGTAATACGACTCACTATAGGGCGGCCGGAATTCGTCGACTGGATCCGGTACCGAGGAGATCTGCC
 GCC**CGGATCGCC**

ATGTTGGAACCTTGTCAGACAGTGGATTGTCTCACACAGAATGGAAATGTGGCTTCTGATTCTGGTGG
 CGTATATGTTCCAGAGAAATGTGAATTCAGTACATATGCCAACTAAAGCTGTGGACCCAGAAGCATTTCAT
 GAATATTAGTGAATCATCCAACATCAAGGCTATCCCTGTGAGGAATATGAAGTCGCAACTGAAGATGGG
 TATATCCTTTCTGTTAACAGGATTCCTCGAGGCCTAGTGAACCTAAGAAGACAGGTTCCAGGCCTGTGG
 TGTTACTGCAGCATGGCCTAGTTGGAGGTGCTAGCAACTGGATTTCCAACCTGCCCAACAATAGCCTGGG
 CTTCACTTCTGGCAGATGCTGGTTTTGACGTGTGGATGGGAACAGCAGGGGAAACGCCTGGTCTGAAAA
 CACAAGACTCTCCATAGACCAAGATGAGTTCGGGCTTTCAGTTATGATGAGATGGCTAGGTTTGACC
 TTCTGCAGTGATAAACTTTATTTGCAGAAAACGGGCCAGGAAAAGATCTATTATGTCGGCTATTCACA
 GGGCACCACCATGGGCTTTATTGCATTTCCACCATGCCAGAGCTGGCTCAGAAAATCAAATGTATTTT
 GCTTTAGCACCCATAGCCACTGTTAAGCATGCAAAAAGCCCCGGGACCAATTTTGTGCTGCCAGATA
 TGATGATCAAGGGATTGTTTGGCAAAAAGAATTTCTGTATCAGACCAGATTTCTCAGACAACTGTTAT
 TTACCTTTGTGGCCAGGTGATTCTTGATCAGATTTGTAGTAATATCATGTTACTTCTGGGTGGATTCAAC
 ACCAACAATATGAACATGAGCCGAGCAAGTGTATGCTGCCCACTCTTGCTGGAACATCTGTGCAAA
 ATATTCTACACTGGAGCCAGGCAGTGAATTCGGTGAACCTCCGGGCATTTGACTGGGGGAGTGAGACCA
 AAATCTGGAAAAATGCAATCAGCCAACCTCTGTAAGGTACAGAGTCAGAGATATGACGGTCCCTACAGCA
 ATGTGGACAGGAGGTGAGACTGGCTTTCAAATCCAGAAGACGTGAAAATGCTGCTCTCTGAGGTGACCA
 ACCTCATCTACCATAAGAATATTCCTGAATGGGCTCACGTGGATTCATCTGGGGTTGGATGCTCCTCA
 CCGTATGTACAATGAAATCATCCATCTGATGCAGCAGGAGGAGACCAACCTTTCCAGGGACGGTGTGAG
 GCCGTATTG

ACGCGTACGCGGCCGCTCGAGCAGAACTCATCTCAGAAGAGGATCTGGCAGCAATGATATCCTGGATT
 ACAAGGATGACGACGATAAGGTTTAA

Protein Sequence:

>RC225684 representing NM_001128215
 Red=Cloning site Green=Tags(s)

MLETLSRQWIVSHRMEMWLLILVAYMFQRNVNSVHMPTKAVDPEAFMNISEIIQHGYPCEEYEVEDG
 YILSVNRIPRGLVQPKTGSRPVLLQHGLVGGASNWISNLPNNSLGFILADAGFDVWMGNSRGNWSRK
 HKTLSIDQDEFWAFSYDEMARFDLPAVINFILQKTGQEKIYYVGYSGTMMGFIAFSTMPELAQKIKMYF
 ALAPIATVKHAKSPGTFLLLPDMMIKGLFGKKEFLYQTRFLRQLVIYLCQGVILDQICSNIMLLGGFN
 TNNMNSRASVYAAHTLAGTSVQNILHWSQAVNSGELRAFDWGSSETKNLEKCNQPTPVRYRVRDMTVPTA
 MWTGGQDWL SNPEDVKMLLSEVTNLIYHKNIPEWAHVDFIWGLDAPHRMYNEIIHLMQEEETNLSQGRCE
 AVL

TRTRPLEQKLISEEDLAANDILDYKDDDDKV

Chromatograms:

https://cdn.origene.com/chromatograms/mk8035_a06.zip

Restriction Sites:

SgfI-MluI

Cloning Scheme:


ACCN: NM_001128215

ORF Size: 1269 bp

OTI Disclaimer: The molecular sequence of this clone aligns with the gene accession number as a point of reference only. However, individual transcript sequences of the same gene can differ through naturally occurring variations (e.g. polymorphisms), each with its own valid existence. This clone is substantially in agreement with the reference, but a complete review of all prevailing variants is recommended prior to use. [More info](#)

OTI Annotation: This clone was engineered to express the complete ORF with an expression tag. Expression varies depending on the nature of the gene.

Components: The ORF clone is ion-exchange column purified and shipped in a 2D barcoded Matrix tube containing 10ug of transfection-ready, dried plasmid DNA (reconstitute with 100 ul of water).

Reconstitution Method:

1. Centrifuge at 5,000xg for 5min.
2. Carefully open the tube and add 100ul of sterile water to dissolve the DNA.
3. Close the tube and incubate for 10 minutes at room temperature.
4. Briefly vortex the tube and then do a quick spin (less than 5000xg) to concentrate the liquid at the bottom.
5. Store the suspended plasmid at -20°C. The DNA is stable for at least one year from date of shipping when stored at -20°C.

RefSeq: [NM_001128215.1](#), [NP_001121687.1](#)

RefSeq ORF: 1272 bp

Locus ID: 340654

UniProt ID: [Q5VYY2](#)

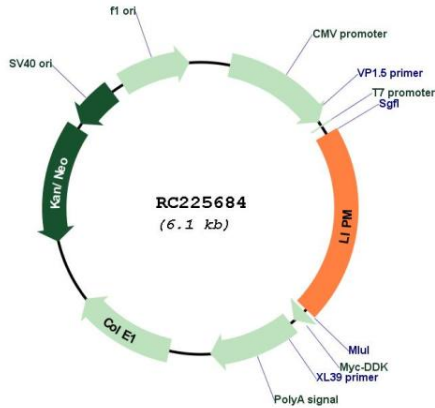
Cytogenetics: 10q23.31

Protein Families: Druggable Genome

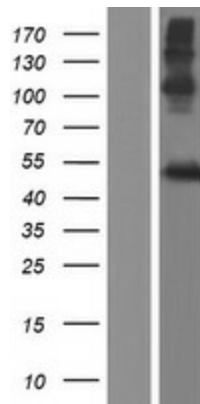
MW: 48.1 kDa

Gene Summary: Plays a highly specific role in the last step of keratinocyte differentiation. May have an essential function in lipid metabolism of the most differentiated epidermal layers. [UniProtKB/Swiss-Prot Function]

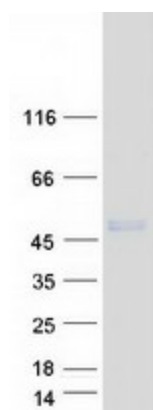
Product images:



Circular map for RC225684



Western blot validation of overexpression lysate (Cat# [LY426929]) using anti-DDK antibody (Cat# [TA50011-100]). Left: Cell lysates from untransfected HEK293T cells; Right: Cell lysates from HEK293T cells transfected with RC225684 using transfection reagent MegaTran 2.0 (Cat# [TT210002]).



Coomassie blue staining of purified LIPM protein (Cat# [TP325684]). The protein was produced from HEK293T cells transfected with LIPM cDNA clone (Cat# RC225684) using MegaTran 2.0 (Cat# [TT210002]).