

## Product datasheet for RC225681

### PRR22 (NM\_001134316) Human Tagged ORF Clone

#### Product data:

Product Type:	Expression Plasmids
Product Name:	PRR22 (NM_001134316) Human Tagged ORF Clone
Tag:	Myc-DDK
Symbol:	PRR22
Mammalian Cell Selection:	Neomycin
Vector:	pCMV6-Entry (PS100001)
E. coli Selection:	Kanamycin (25 ug/mL)
ORF Nucleotide Sequence:	>RC225681 representing NM_001134316 Red=Cloning site Blue=ORF Green=Tags(s)

TTTTGTAATACGACTCACTATAGGGCGGCCGGAATTCGTCGACTGGATCCGGTACCGAGGAGATCTGCC  
GCC**CGATCGCC**

ATGCAGCACCCCAAACCGTTCTGTGCCCTGCAGCTCCCCAGGAAGGTTTCAGCCCGCAGAGTCTGGAGG  
GGGCTGAGGTGCTGGCAACCAGCCTGCTCCACCTGTGCCGAGCCTCCTCCCGCTATGGGCTCCTTGAA  
CCTGTATCATCCCCAGACCCAGAGAAAAGAGGTGTTCCAGCCCCACCAGCAGGTTTCCAGATGGCCCCA  
TGCGGGTGTCTTCGACCCCCGCATCTATCGGATCGAGTGGACCACCCCGACCTGGGCCAGTCAGCCC  
TGTATAAGCTGGCAGCAAGCAGCGGGGGCCAGCGGGGGTCCCCCGCCAGGCAGCTACCTCCTGGA  
GCCTCAGCCCTACCTCAAGGCCCGGGGCTGCCTCCATACCCCACTACCAGCAGGCACCCGGGGGCC  
CAGTTTCTCTTGCCCTACTTCCCGCCTGAGGGCCCGGGCCAGAGGCTCTGGGTTTTGTGGGGACGCAG  
GGCCCGCCGCTTCGTGGAGCTGCCCTACCGCCCTAGAGGAAGGCCCGGCCCGCTGCCACCCACC  
CCCCAAGGAGAACAAGCCGCCCTGTACTCATCAGCTGCCTGCAGAGCCACACTGCCCCAGACGCC  
TACAGCCACCTCCAGGTCACCTCGGCCACTTCCCTGGGCCGAACCCCTGGCCTTCCCCGTCAGGAGC  
TGCAGGGCAGTGGGGCCGACCTGGGGTCCCCGTACCCACCGGCCTCAGCGAGCTCAAGGTGGCCGA  
GGTCAAGGAGGGGCCCTGCTGGGAGCAGGCAAGGCCAAGGCCCAAGACGGCCAGAGCTTTGGCACTG  
CCTGACAAGTTCTGCTGGAGGACGCCATGAAGCTCTTCGACTGCCTGCCAGGCGCCTCTGAGCCTGAGG  
GTACCCTGTGCGAGGTCCCTGGGCCGGCCCTGCCTGACAGCAGTGGTGGAACTCAGCCGATGACATCCG  
CTCGCTGTGCCTGCCGAGGAGCTGCTGTCTTTGACTACAGCGTGCCTGAGATCCTGGACACCGTGTCC  
AACGTTGACTACTTCTTCAACTTCAAGGCGCTCGACGAGGAGCAGCCGCCACCCGGGGCCCCCTGCCA  
CCAACACCCCGGCCCCATTCTGTCTGGCAAGAGAAAAGCCTCGACGGCCAAGAAGGGAAAGCCGGGAAG  
GAAGGCCAGGCAGCCGGCAGGCCAGCCAGCGCCACTCCCCGGGGCCAGGGAGGACCTGGGAGCCACC  
CCGCAT

**ACGCGT**ACGCGGCCGCTCGAGCAGAACTCATCTCAGAAGAGGATCTGGCAGCAAATGATATCCTGGATT  
ACAAGGATGACGACGATAAGGTTTAA



**Protein Sequence:** >RC225681 representing NM\_001134316  
 Red=Cloning site Green=Tags(s)

MQHPKPFCAAPQEGFSPQSLEGAEVLGNQPAPTCAEPPPAMGSLNLYHPPDPEKEVFPAPPAGFQMAP  
 CGCFDFPRIYRIEWTTPDLGQSALYKLAASSGGPAGVPSAPGSYLLEPQPYLKAPGLPPYPHYQQAPGGP  
 QFLLPYFPPEGPGPEALGFVGDAGPAAFVELPLPPEEGPAPLPPPPKPKPPVLIITLPAEPTLPPDA  
 YSHLQGHLGHFPGPEPLAFPVKELQSGARPGVPLYPPLSELKVAEVKEGALLGAGKAKAPKTARALAL  
 PDKVLLLEDAMKLFDCPLGASEPEGTLCEVPGPALPDSSGNSADDIRSLCLPEELL SFDYSVPEILDTVS  
 NVDYFFNFKALDEEQPPHPGPPATNTPAPILSGKRKASTAKKGKPKRKARQPAGPASATPPGPREDLGAT  
 PH

TRTRPLEQKLISEEDLAANDILDYKDDDDKV

**Chromatograms:** [https://cdn.origene.com/chromatograms/mk8034\\_f09.zip](https://cdn.origene.com/chromatograms/mk8034_f09.zip)

**Restriction Sites:** SgfI-MluI

**Cloning Scheme:**



**ACCN:** NM\_001134316

**ORF Size:** 1266 bp

**OTI Disclaimer:** The molecular sequence of this clone aligns with the gene accession number as a point of reference only. However, individual transcript sequences of the same gene can differ through naturally occurring variations (e.g. polymorphisms), each with its own valid existence. This clone is substantially in agreement with the reference, but a complete review of all prevailing variants is recommended prior to use. [More info](#)

**OTI Annotation:** This clone was engineered to express the complete ORF with an expression tag. Expression varies depending on the nature of the gene.

**Components:** The ORF clone is ion-exchange column purified and shipped in a 2D barcoded Matrix tube containing 10ug of transfection-ready, dried plasmid DNA (reconstitute with 100 ul of water).

- Reconstitution Method:**
1. Centrifuge at 5,000xg for 5min.
  2. Carefully open the tube and add 100ul of sterile water to dissolve the DNA.
  3. Close the tube and incubate for 10 minutes at room temperature.
  4. Briefly vortex the tube and then do a quick spin (less than 5000xg) to concentrate the liquid at the bottom.
  5. Store the suspended plasmid at -20°C. The DNA is stable for at least one year from date of shipping when stored at -20°C.

**RefSeq:** [NM\\_001134316.2](#)

**RefSeq ORF:** 1269 bp

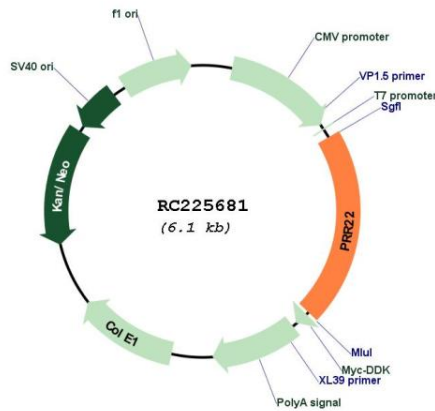
**Locus ID:** 163154

**UniProt ID:** [Q8IZ63](#)

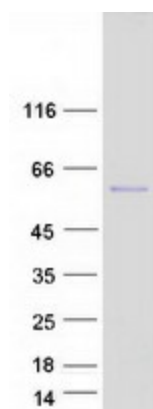
**Cytogenetics:** 19p13.3

**MW:** 43.8 kDa

**Product images:**



Circular map for RC225681



Coomassie blue staining of purified PRR22 protein (Cat# [TP325681]). The protein was produced from HEK293T cells transfected with PRR22 cDNA clone (Cat# RC225681) using MegaTran 2.0 (Cat# [TT210002]).