

Product datasheet for RC225671

DNAJB5 (NM_001135005) Human Tagged ORF Clone

Product data:

Product Type:	Expression Plasmids
Product Name:	DNAJB5 (NM_001135005) Human Tagged ORF Clone
Tag:	Myc-DDK
Symbol:	DNAJB5
Synonyms:	Hsc40
Mammalian Cell Selection:	Neomycin
Vector:	pCMV6-Entry (PS100001)
E. coli Selection:	Kanamycin (25 ug/mL)
ORF Nucleotide Sequence:	>RC225671 representing NM_001135005 Red=Cloning site Blue=ORF Green=Tags(s)

TTTTGTAATACGACTCACTATAGGGCGGCCGGAATTCGTCGACTGGATCCGGTACCGAGGAGATCTGCC
GCC**CGATCGCC**

ATGTTTAAGCGCACAGTCTCTCCTGCCACCCAGCAGCACCCCACTGCAGGCCGAGGAGCTTTCC
GGAGCTTCCCACACTCCTGGGAGAAGACTTCTTAGCCAGCTTGATGTTTAAAATTCAGCTGGAGCCCTT
AAAACCTCGAGCGTGGACGCTGAATGGGTTTGTAAAGTTTCGAAACAAGGAGACCAGTGTGGTCCAGTG
GCTGTGATGGGAAAAGATTATTACAAGATTCCTGGGATCCCATCGGGGCCAACGAGGATGAGATCAAGA
AAGCCTACCGAAGATGGCCTTGAAGTACCACCAGACAAGAATAAAGAACCCAACGCTGAGGAGAAGTT
TAAGGAGATTGCAGAGGCCTATGATGTGCTAAGTGACCCCAAGAAACGGGGCCTGTATGACCAGTATGGG
GAGGAAGGCCTGAAGACCGCGGTGGCAGTACAGTGGCTCCAGTGGCTCCTTTACTACACCTTTCATG
GGGACCCCATGCCACCTTTGCCTCCTTCTTGGTGGCTCCAACCCCTTCGATATCTTCTTGGCAGCAG
CCGCTCCACTCGGCCCTTCAGTGGCTTTGACCCAGATGACATGGATGTGGATGAAGATGAGGACCCATTT
GGCGCTTTCGGCCGTTTTGGCTTCAATGGGCTGAGTAGGGTCCAAGCGAGCCCAAGAACCACTGTACC
CTCGGCGCAAGGTGCAGGACCCCAAGTGGTGCACGAGCTGCGGGTGTCCCTGGAGGAGATCTACCATGG
CTCCACCAAGCGCATGAAGATCACAAGGCGTGCCTCAACCCTGATGGGGAAGTGTGCGCACCGAGGAC
AAGATCCTGCACATAGTCATCAAGCGTGGCTGGAAGGAAGCACCAAGATCACCTTCCCCAAGAAGGCG
AGGCCACCTGACAACATCCCTGCTGACATCGTCTTTGTGCTCAAAGACAAGCCCATGCACACTTCCG
CCGAGATGGCACCAACGTGCTCTACAGTCCCTGATCAGCCTCAAGGAGCGCTGTGTGGCTGCACTGTG
AACATTCCACTATCGACGGCCGAGTATCCCTTTGCCCTGCAATGATGTCATCAAGCCAGGCACCGTGA
AGAGACTCCGTGGGAGGGCCTTCCCTTCCCCAAAGTGCCTCAAGGAGGAGACCTCATTGTTGAGTT
CAAAGTTCGTTCCAGACAGATTAACACCACAGACAAGACAGATCCTTAAGCAGCACCTACCCTGTTCC

ACGCGTACGCGGCCGCTCGAGCAGAACTCATCTCAGAAGAGGATCTGGCAGCAAATGATATCCTGGATT
ACAAGGATGACGACGATAAGGTTTAA



[View online »](#)

Protein Sequence: >RC225671 representing NM_001135005
Red=Cloning site Green=Tags(s)

MFKRTLSCPPPAAPPLQARGAFRSFPHSWGEDFLASLMFKIQLEPLKLRWLNGFVKFRNKETSAGPV
 AVMGDYKILGIPSGANEDEIKKAYRKMALYHPDKNKEPNAEEKFKEIAEAYDVLSDPKKRGLYDQYG
 EEGLKTGGGTSGGSSGSFHYTFHGDPHATFASF FGGSNPFDIFFASSRSTRPFSGFDPDDMDVEDEDPF
 GAFGRFGFNGLSRGP RRAPEPL YPRRKVQDPPVVHEL RVSL EEI YHGSTKRMKITRRRLNPDGRTVRTD
 KILHIVIKRGWKEGKTI TFPKEGDATPDNIPADIVFVLKDKPHAHFRRDGTNVLYSALISLKEALCGCTV
 NIPTIDGRVIPLPCNDVIKPGTVKRLRGEGLPFPKVPTQRGDLIVFEKVRFPDRLTPQTRQILKQHLPCS

TRTRPLEQKLISEEDLAANDILDYKDDDDKV

Chromatograms: https://cdn.origene.com/chromatograms/mk8058_f07.zip

Restriction Sites: SgfI-MluI

Cloning Scheme:



* The last codon before the Stop codon of the ORF

ACCN: NM_001135005

ORF Size: 1260 bp

OTI Disclaimer: The molecular sequence of this clone aligns with the gene accession number as a point of reference only. However, individual transcript sequences of the same gene can differ through naturally occurring variations (e.g. polymorphisms), each with its own valid existence. This clone is substantially in agreement with the reference, but a complete review of all prevailing variants is recommended prior to use. [More info](#)

OTI Annotation: This clone was engineered to express the complete ORF with an expression tag. Expression varies depending on the nature of the gene.

Components: The ORF clone is ion-exchange column purified and shipped in a 2D barcoded Matrix tube containing 10ug of transfection-ready, dried plasmid DNA (reconstitute with 100 ul of water).

Reconstitution Method:

1. Centrifuge at 5,000xg for 5min.
2. Carefully open the tube and add 100ul of sterile water to dissolve the DNA.
3. Close the tube and incubate for 10 minutes at room temperature.
4. Briefly vortex the tube and then do a quick spin (less than 5000xg) to concentrate the liquid at the bottom.
5. Store the suspended plasmid at -20°C. The DNA is stable for at least one year from date of shipping when stored at -20°C.

RefSeq: [NM_001135005.3](#)

RefSeq ORF: 1263 bp

Locus ID: 25822

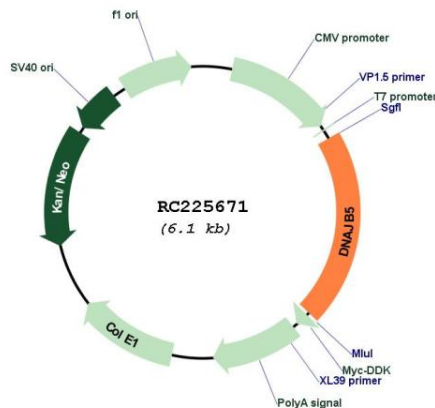
UniProt ID: [O75953](#)

Cytogenetics: 9p13.3

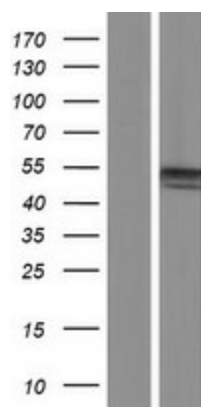
MW: 47 kDa

Gene Summary: This gene encodes a member of the DNAJ heat shock protein 40 family of co-chaperone proteins. The encoded protein contains an N-terminal DNAJ domain and a C-terminal substrate binding domain but lacks the cysteine-rich domain found in other DNAJ family members. In mice, a multi-protein complex containing this protein, thioredoxin 1, and histone deacetylase 4, serves as a master negative regulator of cardiac hypertrophy. [provided by RefSeq, Mar 2017]

Product images:



Circular map for RC225671



Western blot validation of overexpression lysate (Cat# [LY427522]) using anti-DDK antibody (Cat# [TA50011-100]). Left: Cell lysates from untransfected HEK293T cells; Right: Cell lysates from HEK293T cells transfected with RC225671 using transfection reagent MegaTran 2.0 (Cat# [TT210002]).