

Product datasheet for RC225662

PLAG1 (NM_001114635) Human Tagged ORF Clone

Product data:

Product Type:	Expression Plasmids
Product Name:	PLAG1 (NM_001114635) Human Tagged ORF Clone
Tag:	Myc-DDK
Symbol:	PLAG1
Synonyms:	PSA; SGPA; SRS4; ZNF912
Mammalian Cell Selection:	Neomycin
Vector:	pCMV6-Entry (PS100001)
E. coli Selection:	Kanamycin (25 ug/mL)
ORF Nucleotide Sequence:	>RC225662 representing NM_001114635 Red=Cloning site Blue=ORF Green=Tags(s)

TTTTGTAATACGACTCACTATAGGGCGGCCGGAATTCGTCGACTGGATCCGGTACCGAGGAGATCTGCC
GCC**CGATCGCC**

ATGGCTACTCATTCTCCTGAGAAAACCCACAAGTGAATTATTGTGAGAAAATGTTTCACCGAAAGATC
ATCTGAAGAATCACCTCCATACACAGACCCTAACAAAGAGACGTTTAAAGTGCAGAAGATGTGGCAAGAA
CTACAATACCAAGCTTGGATTTAAACGTCACCTGGCCTTGCATGCCGCAACAAGTGGTACCTCACCTGT
AAGGTATGTTTCAAACCTTTTAAAGCACGGGAGTGCTTCTGGAGCACCTTAAATCTCATGCAGGCAAGT
CGTCTGGTGGGGTTAAAGAAAAAAGCACCAGTGCGAACATTGTGATCGCCGGTTCTACACCCGAAAGGA
TGTCCGGAGACACATGGTGGTGCACACTGGAAGAAAGGACTTCCTCTGTCAGTATTGTGCACAGAGATTT
GGCGAAAAGGATCACCTGACTCGACATATGAAGAAGAGTCACAATCAAGAGCTTCTGAAGTCAAAAACAG
AACCAGTGGATTTCTTGACCCATTTACCTGCAATGTGTCTGTGCCTATAAAAGACGAGCTCCTTCCGGT
GATGTCTTACCTTCCAGTGAAGTGTATCAAAGCCATTCACAAACACTTTGCAGTTAAACCTCTACAAC
ACTCCATTTAGTCCATGCAGAGCTCGGGATCTGCCACCAAAATGATCACAACCTTACCTTTGGGAATGA
CATGCCAATAGATATGGACACTGTTTATCCCTCTCACCACTTTCTTTCAAATATCCGTTACAGTTCTAC
CTCATATGCAATTTCTATTCTGAAAAAGAAGCAGCCATTAAGGGGAAATTTGAGAGTTACCTGATGGAG
TTACAAGGTGGCGTCCCTCTTCAAGATTCTCAAGCATCGTCATCATCTAAGCTAGGGTTGGAT
CTCAGATTGGGTCCCTAGATGATGGTGCAGGAGACCTCTCCCTATCCAAAAGCTCTATCTCCATCAGTGA
CCCCCTAAACACACCAGATTGGATTTTCTCAGTTGTTAATTTACATACCTTTAAATGGTCCCTCCCTAT
AATCCTCTATCAGTGGGAGCCTTGAATGAGCTATTCCAGGAAGAAGCACATTCTTCTGTTTCCACG
TCCCCCACAACACAGGATCTTCAGGATCCTGCAAACTATAGGGCTTGGTCTCTGCACTCACTGTC
AGCAGCTTTCACCAGCAGTTTAAGCACAAAGTACCACCCTCCACGTTTCCATCAAGCTTTTTCAG

ACGCGTACGCGGCCGCTCGAGCAGAAACTCATCTCAGAAGAGGATCTGGCAGCAAATGATATCTGGATT
ACAAGGATGACGACGATAAGGTTTAA



Protein Sequence: >RC225662 representing NM_001114635
Red=Cloning site Green=Tags(s)

MATHSPEKTHKCNycekmfhrkdhlknhlhthdPNKETFKCEECGKnyntklGfkrhlalHAATSGDLTC
 KVCLQTFESTGVLLHLKSHAGKSSGGVKEKKHQCEHCRRFYTRKDVRRHMVVHTGRKDFLCQYCAQRF
 GRKDHLTRHMKKSHNQELLLKVKTEPVDFLDPFTCNVSVPIKDELLPVMSLPSELLSKPFTNTLQLNLYN
 TPFQSMQSSGSAHQMITTLPLGMCPIIDMTVHPSHHLSFKYPPFSSTSYAISPEKEQLKGEIESYLME
 LQGGVPSSSQDSQASSSKLGLDPQIGSLDDGAGDLSLKSISISDPLNTPALDFSQLFNFIPLNGPPY
 NPLSVGSLGMSYSQEEAHSSVSQLPPTQDLQDPANTIGLGSLSLSAAFTSSLSTSTTLPRFHQAFQ

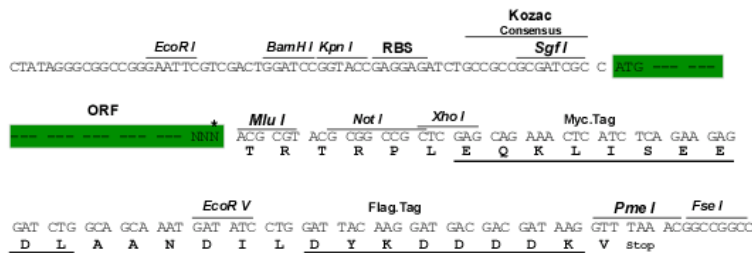
TRTRPLEQKLISEEDLAANDILDYKDDDDKV

Chromatograms: https://cdn.origene.com/chromatograms/mk8058_e02.zip

Restriction Sites: SgfI-MluI

Cloning Scheme:

Cloning sites used for ORF Shuttling:



* The last codon before the Stop codon of the ORF

ACCN: NM_001114635

ORF Size: 1254 bp

OTI Disclaimer: The molecular sequence of this clone aligns with the gene accession number as a point of reference only. However, individual transcript sequences of the same gene can differ through naturally occurring variations (e.g. polymorphisms), each with its own valid existence. This clone is substantially in agreement with the reference, but a complete review of all prevailing variants is recommended prior to use. [More info](#)

OTI Annotation: This clone was engineered to express the complete ORF with an expression tag. Expression varies depending on the nature of the gene.

Components: The ORF clone is ion-exchange column purified and shipped in a 2D barcoded Matrix tube containing 10ug of transfection-ready, dried plasmid DNA (reconstitute with 100 ul of water).

Reconstitution Method:

1. Centrifuge at 5,000xg for 5min.
2. Carefully open the tube and add 100ul of sterile water to dissolve the DNA.
3. Close the tube and incubate for 10 minutes at room temperature.
4. Briefly vortex the tube and then do a quick spin (less than 5000xg) to concentrate the liquid at the bottom.
5. Store the suspended plasmid at -20°C. The DNA is stable for at least one year from date of shipping when stored at -20°C.

RefSeq: [NM_001114635.2](#)

RefSeq ORF: 1257 bp

Locus ID: 5324

UniProt ID: [Q6DJT9](#)

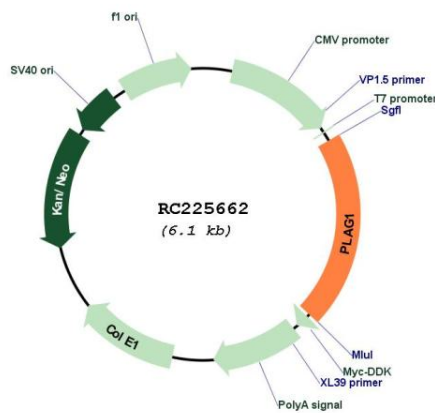
Cytogenetics: 8q12.1

Protein Families: Transcription Factors

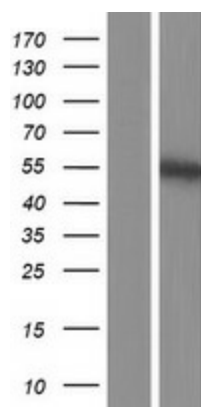
MW: 46.3 kDa

Gene Summary: Pleomorphic adenoma gene 1 encodes a zinc finger protein with 2 putative nuclear localization signals. PLAG1, which is developmentally regulated, has been shown to be consistently rearranged in pleomorphic adenomas of the salivary glands. PLAG1 is activated by the reciprocal chromosomal translocations involving 8q12 in a subset of salivary gland pleomorphic adenomas. Three transcript variants encoding two different isoforms have been found for this gene. [provided by RefSeq, Jul 2008]

Product images:



Circular map for RC225662



Western blot validation of overexpression lysate (Cat# [LY426501]) using anti-DDK antibody (Cat# [TA50011-100]). Left: Cell lysates from untransfected HEK293T cells; Right: Cell lysates from HEK293T cells transfected with RC225662 using transfection reagent MegaTran 2.0 (Cat# [TT210002]).