

## Product datasheet for RC225652

### SPRED2 (NM\_001128210) Human Tagged ORF Clone

#### Product data:

Product Type:	Expression Plasmids
Product Name:	SPRED2 (NM_001128210) Human Tagged ORF Clone
Tag:	Myc-DDK
Symbol:	SPRED2
Synonyms:	Spred-2
Mammalian Cell Selection:	Neomycin
Vector:	pCMV6-Entry (PS100001)
E. coli Selection:	Kanamycin (25 ug/mL)
ORF Nucleotide Sequence:	>RC225652 representing NM_001128210 Red=Cloning site Blue=ORF Green=Tags(s)

TTTTGTAATACGACTCACTATAGGGCGGCCGGAATTCGTCGACTGGATCCGGTACCGAGGAGATCTGCC  
GCC**CGATCGCC**

ATGGCATCGCCTGGCAGTGACAGCTATATTGTGCGTGTCAAGGCTGTGGTTATGACCAGAGATGACTCCA  
GCGGGGGATGGTCCCACAGGAAGGAGGCGGGATCAGTCGCGTCGGGGTCTGTAAGGTCATGCACCCCGA  
AGGCAATGGACGAAGCGGCTTTCTCATCCATGGTGAACGACAGAAAGACAACTGGTGGTATTGGAATGC  
TATGTAAGAAAGGACTTGGTCTACACAAAGCCAATCCAACGTTTCATCACTGGAAGGTCGATAATAGGA  
AGTTTGGACTTACTTTCAAAGCCCTGCTGATGCCCGAGCCTTTGACAGGGGAGTAAGGAAAGCAATCGA  
AGACCTTATAGAAGTTCAACAACGTCATCTTCCACCATCCATAATGAAGCTGAGCTTGGCGATGATGAC  
GTTTTTACAACAGCTACAGACAGTTCTTCTAATTCCTCTCAGAAGAGAGCAACCTACTCGGACAATCT  
CCTCTCCACATCCTGTGAGCACCAGGATTTATACCCTGGGCCACCTCCACGACTCATACCCCACAGA  
CCACTATCACCTCGATCAGCCGATGCCAAGGCCCTACCGCCAGGTGAGCTTCCCGACGACGACGAGGAG  
ATCGTGCGCATCAACCCCGGGAGAAGATCTGGATGACGGGTACGAGGATTACCGGCACGCACCCGTC  
GGGGCAAGTACCGGACCCCTCGGAGGACGCGGACTCCTCCTACGTGCGCTTCCGAAGGGCGAGGTCCC  
CAAGCATGACTACAACCTACCCCTACGTGGACTCCTCAGACTTTGGCCTAGGCGAGGACCCCAAAGGCCG  
GGGGCAGCGTGATCAAGACGCAGCCCTCCCGGGCAAGTCGCGGCGCGGAAGGAGGACGGAGAGCGCT  
CGCGGTGCGTGTACTGCAGGGACATGTTCAACCACGAGGAGAACCAGCGCGGGCCACTGCCAGGACGCGCC  
CGACTCCGTGAGAACTTGCATCCGCCGGGTGAGCTGCATGTGGTGC GCGGACAGCATGCTCTACTCTGT  
ATGTCGGACCCCGAGGGAGACTATACAGACCCTTGCTCGTGCGATACTAGCGACGAGAAGTTTTGCCTCC  
GGTGGATGGCTCTTATTGCCTTGTCTTTCTGGCCCCCTGTATGTGCTGTTACCTGCCCTTCGGGCGCT  
CTACCACTGCGGAGTGATGTGCAGGTGCTGTGGCGGAAGCACAAAGCGGCCGCG

**ACGCGT**ACGCGGCCGCTCGAGCAGAACTCATCTCAGAAGAGGATCTGGCAGCAATGATATCCTGGATT  
ACAAGGATGACGACGATAAGGTTTAA



[View online >](#)

**Protein Sequence:** >RC225652 representing NM\_001128210  
Red=Cloning site Green=Tags(s)

MASPGSDSYIVRVKAVVMTRDDSSGGWFPQEGGGISRVGVCKVMHPEGNRSGFLIHGERQKDKLVVLEC  
YVRKDLVYTKANPTFFHHWKVDNRKFGFLTQSPADARAFDRGVRKAIEDLIEGSTTSSTIHNEAELGDD  
VFTTATDSSNSSQKREQPTRTISPTSCEHRRITYTLGHLHDSYPTDHYHLDQPMRPYRQVSFPDDDEE  
IVRINPREKIWMTYEDYRHAPVRGKYDPSEADSSYVRFKGEVPKHDYNYPYVVDSSDFLGEDPKGR  
GGSVIKTPSRGKSRRRKEDGERSRCVYCRDMFNHEENRRGHQCQDAPDSVRTCIRRVSCEMWCADSM  
LHYHMSDPEGDYTDPCSDTSDEKFCLRWMALIALSFLAPCMCCYLPLRACYHCGVMCRCCGGKHAAA

TRTRPLEQKLISEEDLAANDILDYKDDDDKV

**Chromatograms:** [https://cdn.origene.com/chromatograms/mk8058\\_c09.zip](https://cdn.origene.com/chromatograms/mk8058_c09.zip)

**Restriction Sites:** SgfI-MluI

**Cloning Scheme:**



**ACCN:** NM\_001128210

**ORF Size:** 1245 bp

**OTI Disclaimer:** The molecular sequence of this clone aligns with the gene accession number as a point of reference only. However, individual transcript sequences of the same gene can differ through naturally occurring variations (e.g. polymorphisms), each with its own valid existence. This clone is substantially in agreement with the reference, but a complete review of all prevailing variants is recommended prior to use. [More info](#)

**OTI Annotation:** This clone was engineered to express the complete ORF with an expression tag. Expression varies depending on the nature of the gene.

**Components:** The ORF clone is ion-exchange column purified and shipped in a 2D barcoded Matrix tube containing 10ug of transfection-ready, dried plasmid DNA (reconstitute with 100 ul of water).

**Reconstitution Method:**

1. Centrifuge at 5,000xg for 5min.
2. Carefully open the tube and add 100ul of sterile water to dissolve the DNA.
3. Close the tube and incubate for 10 minutes at room temperature.
4. Briefly vortex the tube and then do a quick spin (less than 5000xg) to concentrate the liquid at the bottom.
5. Store the suspended plasmid at -20°C. The DNA is stable for at least one year from date of shipping when stored at -20°C.

**RefSeq:** [NM\\_001128210.2](#)

**RefSeq ORF:** 1248 bp

**Locus ID:** 200734

**UniProt ID:** [Q7Z698](#)

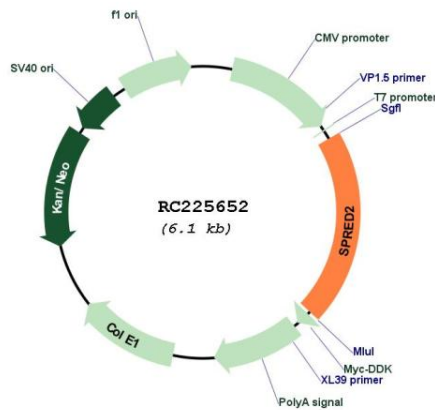
**Cytogenetics:** 2p14

**Protein Pathways:** Jak-STAT signaling pathway

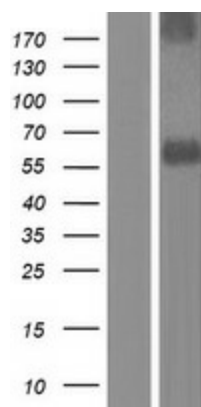
**MW:** 46.9 kDa

**Gene Summary:** SPRED2 is a member of the Sprouty (see SPRY1; MIM 602465)/SPRED family of proteins that regulate growth factor-induced activation of the MAP kinase cascade (see MAPK1; MIM 176948) (Nonami et al., 2004 [PubMed 15465815]).[supplied by OMIM, Mar 2008]

**Product images:**



Circular map for RC225652



Western blot validation of overexpression lysate (Cat# [LY426924]) using anti-DDK antibody (Cat# [TA50011-100]). Left: Cell lysates from untransfected HEK293T cells; Right: Cell lysates from HEK293T cells transfected with RC225652 using transfection reagent MegaTran 2.0 (Cat# [TT210002]).