

Product datasheet for **RC225650**

TBC1D14 (NM_001113363) Human Tagged ORF Clone

Product data:

Product Type:	Expression Plasmids
Product Name:	TBC1D14 (NM_001113363) Human Tagged ORF Clone
Tag:	Myc-DDK
Symbol:	TBC1D14
Mammalian Cell Selection:	Neomycin
Vector:	pCMV6-Entry (PS100001)
E. coli Selection:	Kanamycin (25 ug/mL)
ORF Nucleotide Sequence:	>RC225650 representing NM_001113363 Red=Cloning site Blue=ORF Green=Tags(s)

TTTTGTAATACGACTCACTATAGGGCGGCCGGAATTCGTCGACTGGATCCGGTACCGAGGAGATCTGCC
GCC**CGATCGCC**

ATGGAATATGAAGACAAGGCTGGAAGACCTAGCAAGCCACCCTCTCAAAGCAGAATGTGAGGAAGAATC
TTGACTTTGAACCACTTTCCACCACCGCACTCATCCTCGAGGACAGACCAGCAAATCTCCAGCAAAACC
AGCTGAAGAAGCTCAGAAGCACAGACAGCAGTATGAAGAAATGGTGGTTCAGGCCAAAAGCGAGAGCTG
AAAGAAGCCCAGCGAAGGAAGAAGCAGCTGGAAGAAAGATGCAGAGTCGAGGAAAGCATTGGAAACGCTG
TGCTCACTGGAATAATGAGATCTTACCTAACTGGGAAACAATGGTGCCTAGAAAAGTTCGAGATTT
ATGGTGGCAGGAATCCCTCCAAGTGTGAGAGGCAAAGTCTGGAGCTTAGCCATTGGCAACGAGTTAAAT
ATCACCCACGAGCTCTTTGACATCTGTCTTGCCCGAGCCAAGGAGAGGTGGCGGTCCCTTAGCACAGGAG
GCTCTGAAGTGGAGAACGAAGATGCTGGTTTTTTCAGCAGCAGACAGAGAAGCCAGTCTGGAGCTTATTAA
ACTGGACATTTCTAGAACATTTCTAATCTCTGCATTTTCCAGCAAGGTGGTCCATATCATGACATGTTG
CACAGTATTTGGGCGCTTATACTTGTACCAGCCAGATGTGGGTATGTCCAGGGCATGCTTTCATAG
CAGCAGTGTGATCTTGAACCTAGATACTGCAGATGCCTTTATTGCCCTTTCTAACCTTCTGAATAAAC
CTGTCAAATGGCGTTTTTATAGAGTGGACCATGGCCTTATGTTGACTTATTTGCTGCATTGAAGTATTC
TTTGAAGAAAATTTGCCGAAATTTTGGCATTTCAGAAGAACAACCTAACTCCAGATATCTACCTAA
TTGATTGGATCTTACCTTATATAGTAAATCTCTGCCCTCGACCTGGCCTGTCGTATCTGGGACGTGTT
CTGTCCGATGGGGAAGAGTTCTGTTCCGCACGGCCCTGGGCATCCTGAAGCTGTTTCGAGGACATCCTG
ACCAAGATGGACTTCATTACATGGCCAGTTCCTGACCCGGCTGCCCGAGGACCTGCCCGCAGGAGC
TGTTTTGCCTCCATCGCCACGATCCAGATGCAGAGCCGAAACAAGAAGTGGGCTCAGGTAAGTACTGACTGCATT
GCAGAAAGACAGCCGGGAAATGGAGAAGGGAAGTCCGTCCTCCGACAC

ACGCGTACGCGGCGCTCGAGCAGAACTCATCTCAGAAGAGGATCTGGCAGCAAATGATATCTGGATT
ACAAGGATGACGACGATAAGGTTTAA



[View online »](#)

Protein Sequence: >RC225650 representing NM_001113363
Red=Cloning site Green=Tags(s)

MEYEDKAGRPSKPPSPKQNVKLNDFEPLSTTALILED RPANLPAKPAAEAQKHRQQYEEMVVQAKKREL
 KEAQRKKQLEERCVEESIGNAVLTWNNEILPNWETMWC SRKVRDLWWQGI PPSVRGKVWSLAIGNELN
 ITHELFDICLARA KERW RSLSTGGSEVENEDAGF SAADREASLELIKLDI SRTFPNL CIFQGGPYHDML
 HSILGAYTCYRPDVGYVQGMSFIAAVLILNLDTADAFIAFSNLLNKPCQMAFFRVDHGLMLTYFAAFEV F
 FEENLPKLF AHFKNNLTPDIYLIDWIFL YSKSLPLDLACRIWDVFCRDGEEFLFRTALGILKLFEDIL
 TKMDFIHMAQFLTRLPELPAEELFASIATI QMSRNKKWAQVLTALQKDSREMEKGSPSLRH

TRTRPLEQKLISEEDLAANDILDYKDDDDKV

Chromatograms: https://cdn.origene.com/chromatograms/mk8058_b06.zip

Restriction Sites: Sgfl-MluI

Cloning Scheme:

Cloning sites used for ORF Shuttling:



* The last codon before the Stop codon of the ORF

ACCN: NM_001113363

ORF Size: 1239 bp

OTI Disclaimer: The molecular sequence of this clone aligns with the gene accession number as a point of reference only. However, individual transcript sequences of the same gene can differ through naturally occurring variations (e.g. polymorphisms), each with its own valid existence. This clone is substantially in agreement with the reference, but a complete review of all prevailing variants is recommended prior to use. [More info](#)

OTI Annotation: This clone was engineered to express the complete ORF with an expression tag. Expression varies depending on the nature of the gene.

Components: The ORF clone is ion-exchange column purified and shipped in a 2D barcoded Matrix tube containing 10ug of transfection-ready, dried plasmid DNA (reconstitute with 100 ul of water).

Reconstitution Method:

1. Centrifuge at 5,000xg for 5min.
2. Carefully open the tube and add 100ul of sterile water to dissolve the DNA.
3. Close the tube and incubate for 10 minutes at room temperature.
4. Briefly vortex the tube and then do a quick spin (less than 5000xg) to concentrate the liquid at the bottom.
5. Store the suspended plasmid at -20°C. The DNA is stable for at least one year from date of shipping when stored at -20°C.

RefSeq: [NM_001113363.2](#)

RefSeq ORF: 1242 bp

Locus ID: 57533

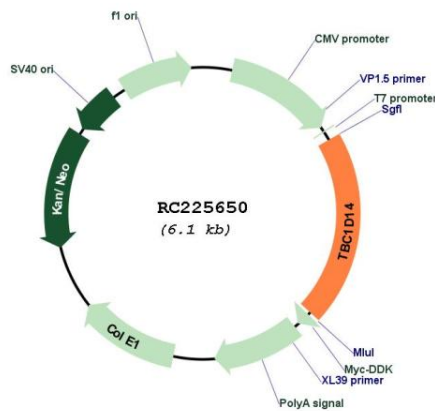
UniProt ID: [Q9P2M4](#)

Cytogenetics: 4p16.1

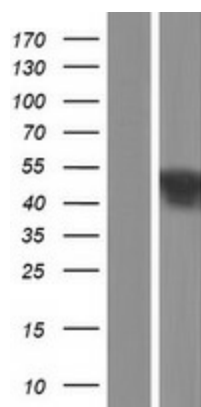
MW: 47.5 kDa

Gene Summary: Negative regulator of starvation-induced autophagosome formation.[UniProtKB/Swiss-Prot Function]

Product images:



Circular map for RC225650



Western blot validation of overexpression lysate (Cat# [LY426402]) using anti-DDK antibody (Cat# [TA50011-100]). Left: Cell lysates from untransfected HEK293T cells; Right: Cell lysates from HEK293T cells transfected with RC225650 using transfection reagent MegaTran 2.0 (Cat# [TT210002]).