

Product datasheet for RC225644

LAMP2 (NM_001122606) Human Tagged ORF Clone

Product data:

Product Type:	Expression Plasmids
Product Name:	LAMP2 (NM_001122606) Human Tagged ORF Clone
Tag:	Myc-DDK
Symbol:	LAMP2
Synonyms:	CD107b; DND; LAMP-2; LAMPB; LGP-96; LGP110
Mammalian Cell Selection:	Neomycin
Vector:	pCMV6-Entry (PS100001)
E. coli Selection:	Kanamycin (25 ug/mL)
ORF Nucleotide Sequence:	>RC225644 representing NM_001122606 Red=Cloning site Blue=ORF Green=Tags(s)

TTTTGTAATACGACTCACTATAGGGCGGCCGGAATTCGTCGACTGGATCCGGTACCGAGGAGATCTGCC
GCC**CGATCGCC**

ATGGTGTGCTTCCGCTCTTCCCGGTTCCGGGCTCAGGGCTCGTTCTGGTCTGCCTAGTCTGGGAGCTG
TGCGGTCTTATGCATTGGAACCTAATTTGACAGATTGAGAAAATGCCACTTGCCTTTATGCAAAATGGCA
GATGAATTTACAGTACGCTATGAACTACAAATAAACTTATAAACTGTAACCATTTAGACCATGGC
ACTGTGACATATAATGGAAGCATTGTGGGGATGATCAGAATGGTCCCAAAATAGCAGTGCAGTTCGGAC
CTGGCTTTTCTGGATTGCGAATTTTACCAAGGCAGCATCTACTTATTCAATTGACAGCGTCTCATTTC
CTACAACACTGGTGATAACACAACATTTCTGATGCTGAAGATAAAGGAATTCCTACTGTTGATGAACCT
TTGGCCATCAGAATTCATTGAATGACCTTTTTAGATGCAATAGTTTATCAACTTTGGAAAAAATGATG
TTGTCCAACACTACTGGGATGTTCTTGTACAAGCTTTTGTCCAAAATGGCACAGTGAGCACAAAATGAGTT
CCTGTGTGATAAAGACAAAACCTCAACAGTGGCACCACCATACACCACTGTGCCATCTCCTACTACA
ACACCTACTCAAAGGAAAAACCAAGCTGGAACCTATTCAGTTAATAATGGCAATGATACTTGTCTGC
TGGCTACCATGGGGCTGCAGTGAACATCACTCAGGATAAGGTTGCTTCAGTTATTAACATCAACCCCAA
TACAACACTCCACAGGCAGCTGCCGTTCTCACACTGCTCTACTTAGACTCAATAGCAGCACCATTAAG
TATCTAGACTTTGTCTTTGCTGTGAAAAATGAAAACCGATTTTATCTGAAGGAAGTGAACATCAGCATGT
ATTTGGTTAATGGCTCCGTTTTACGATTGCAAATAACAATCTCAGTACTGGGATGCCCCCTGGGAAG
TTCTTATATGTGCAACAAGAGCAGACTGTTTCAGTGTCTGGAGCATTTCAGATAAATACCTTTGATCTA
AGGGTTACGCTTTCAATGTGACACAAGGAAAGTATTCTACAGCTGAAGAATGTTCTGCTGACTCTGACC
TCAACTTTCTTATTCTGTTGAGTGGGTGGCCTTGGCTTCTTATAATTGTTGTCTTTATCTCTTA
TATGATTGGAAGAAGGAAAAGTCGACTGTTATCAGTCTGTG

ACGGTACGGCGCGCTCGAGCAGAACTCATCTCAGAAGAGGATCTGGCAGCAATGATATCCTGGATT
ACAAGGATGACGACGATAAGGTTTAA



[View online >](#)

Protein Sequence: >RC225644 representing NM_001122606
Red=Cloning site Green=Tags(s)

MVCFRLFPVPGSGLVLVCLVLGAVRSYALELNLTDSENATCLYAKWQMNFTVRYETTNKTYKTVTISDHG
 TVTYNGSICGDDQNGPKIAVQFGPGFSWIANFKAASYIDSVSFSYNTGDNTTFPDAEDKGILTVDEL
 LAIRIPLNDLFRCNLSLLEKNDVVQHYWDVLVQAFVQNGTVSTNEFLCDKDKTSTVAPTIHTTVPSPPT
 TPTPKPEAGTYSVNNGNDTCLLATMGLQLNITQDKVASVININPNTTHSTGSCRSHALLRLNSSTIK
 YLDFVFAVKNNRFYLKEVNISMVYLVNGSVFSIANNNLSYWDAPLGGSSYMCNKEQTVSVSGAFQINTFDL
 RVQPFNVTQGKYSTAECSADSDLNFLIPVAVGVALGFLIIVVFISYMIARRRSRTGYQSV

TRTRPLEQKLISEEDLAANDILDYKDDDDKV

Chromatograms: https://cdn.origene.com/chromatograms/mk8058_a12.zip

Restriction Sites: SgfI-MluI

Cloning Scheme:

Cloning sites used for ORF Shuttling:



* The last codon before the Stop codon of the ORF

ACCN: NM_001122606

ORF Size: 1233 bp

OTI Disclaimer: The molecular sequence of this clone aligns with the gene accession number as a point of reference only. However, individual transcript sequences of the same gene can differ through naturally occurring variations (e.g. polymorphisms), each with its own valid existence. This clone is substantially in agreement with the reference, but a complete review of all prevailing variants is recommended prior to use. [More info](#)

OTI Annotation: This clone was engineered to express the complete ORF with an expression tag. Expression varies depending on the nature of the gene.

Components: The ORF clone is ion-exchange column purified and shipped in a 2D barcoded Matrix tube containing 10ug of transfection-ready, dried plasmid DNA (reconstitute with 100 ul of water).

Reconstitution Method:

1. Centrifuge at 5,000xg for 5min.
2. Carefully open the tube and add 100ul of sterile water to dissolve the DNA.
3. Close the tube and incubate for 10 minutes at room temperature.
4. Briefly vortex the tube and then do a quick spin (less than 5000xg) to concentrate the liquid at the bottom.
5. Store the suspended plasmid at -20°C. The DNA is stable for at least one year from date of shipping when stored at -20°C.

RefSeq: [NM_001122606.1](#), [NP_001116078.1](#)

RefSeq ORF: 1236 bp

Locus ID: 3920

UniProt ID: [P13473](#)

Cytogenetics: Xq24

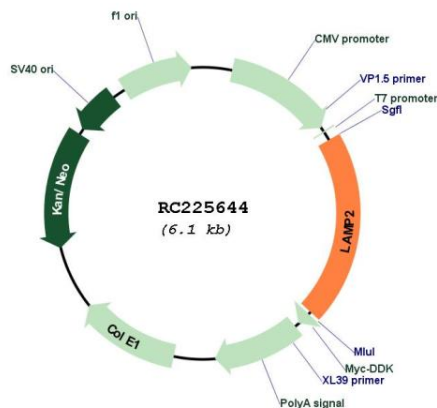
Protein Families: Druggable Genome, ES Cell Differentiation/IPS, Transmembrane

Protein Pathways: Lysosome

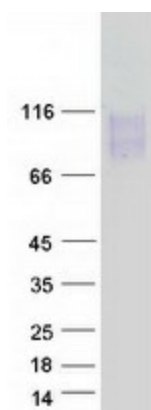
MW: 45.17 kDa

Gene Summary: The protein encoded by this gene is a member of a family of membrane glycoproteins. This glycoprotein provides selectins with carbohydrate ligands. It may play a role in tumor cell metastasis. It may also function in the protection, maintenance, and adhesion of the lysosome. Alternative splicing of this gene results in multiple transcript variants encoding distinct proteins. [provided by RefSeq, Jul 2008]

Product images:



Circular map for RC225644



Coomassie blue staining of purified LAMP2 protein (Cat# [TP325644]). The protein was produced from HEK293T cells transfected with LAMP2 cDNA clone (Cat# RC225644) using MegaTran 2.0 (Cat# [TT210002]).