

Product datasheet for **RC225643**

SIGIRR (NM_001135054) Human Tagged ORF Clone

Product data:

Product Type: Expression Plasmids
Product Name: SIGIRR (NM_001135054) Human Tagged ORF Clone
Tag: Myc-DDK
Symbol: SIGIRR
Synonyms: IL-1R8; TIR8
Mammalian Cell Selection: Neomycin
Vector: pCMV6-Entry (PS100001)
E. coli Selection: Kanamycin (25 ug/mL)
ORF Nucleotide Sequence: >RC225643 ORF sequence
 Red=Cloning site Blue=ORF Green=Tags(s)

TTTTGTAATACGACTCACTATAGGGCGGCCGGAATTCGTCGACTGGATCCGGTACCGAGGAGATCTGCC
 GCC**CGATCGCC**

ATGCCAGGTGTCTGTGATAGGGCCCTGACTTCCTCTCCCGTCTGAAGACCAGGTGCTGAGGCCTGCCT
 TGGGCAGCTCAGTGGCTCTGAAGTGCACGGCTTGGGTAGTCTCTGGGCCCACTGCTCCCTGCCTCAGT
 CCAGTGGCTGAAAGACGGGCTTCCATTGGGAATTGGGGCCACTACAGCCTCCACGAGTACTCCTGGGTC
 AAGGCCAACCTGTCAGAGGTGCTTGTGTCCAGTGTCTGGGGTCAACGTGACCAGCACTGAAGTCTATG
 GGGCTTACCTGCTCCATCCAGAACATCAGCTTCTCCTCCTTCACTCTCAGAGAGCTGGCCCTACAAG
 CCAGTGGCTGCGGTGCTGGCCTCCCTCCTGGTCTGCTGGCCCTGCTGCTGGCCGCCCTGCTCTATGTC
 AAGTGGCTCTCAACGTGCTGCTCTGGTACCAGGACGCGTATGGGGAGGTGGAGATAAACGACGGGAAGC
 TCTACGACGCTACGTCTCTACAGCGACTGCCCGAGGACCGCAAGTTCGTGAACCTTATCCTAAAGCC
 GCAGCTGGAGCGGCTCGGGCTACAAGCTTCTCTGGACGACCGGACCTCCTGCCGCGGCTGAGCCC
 TCCGCGACCTCTTGGTGAACCTGAGCCGCTGCCGACGCTCATCGTGGTGTCTTCGGACGCTTCTCTGA
 GCCGGCTGGTGCAGCCACAGCTTCCGGGAGGGCTGTGCCGGTGTGGAGCTCACCCGAGACCCAT
 CTTATCACCTTCGAGGGCCAGAGGCGGACCCCGCGCACCCGGCGCTCCGCTGCTGCCAGCACCCGC
 CACTGGTGACCTTGTCTGTGGAGGCCGGCTCCGTGACTCCTTCTCCGATTTTTGGAAAGAAGTGC
 AGCTGGCGCTGCCGCGGAAGGTGCGGTACAGCCGGTGAAGGAGACCCAGACGAGCTGCAGGACGA
 CAAGGACCCATGCTGATTCTTCAGGGCAGTCCCTGAGGGCCGGCCCTGGACTCAGAGGTGGACCCG
 GACCTGAGGGGACCTGGGTGTCCGGGGCTGTTTTGGAGAGCCATCAGCTCCACCGCACACAGTGC
 GGGTCTCGCTGGGAGAGCCGGAGCAGCGAAGTGGACGTCTCGGATCTCGGCTCGCGAACTACAGTGC
 CCGCACAGACTTCTACTGCTGTGTTCAAGGATGATG

AG**CGGACCG**ACGCGTACGCGGCCGCTCGAGCAGAACTCATCTCAGAAGAGGATCTGGCAGCAAATGATATCC
 TGGATTACAAGGATGACGACGATAAGGTTTAA



[View online »](#)

Protein Sequence: >RC225643 protein sequence
Red=Cloning site Green=Tags(s)

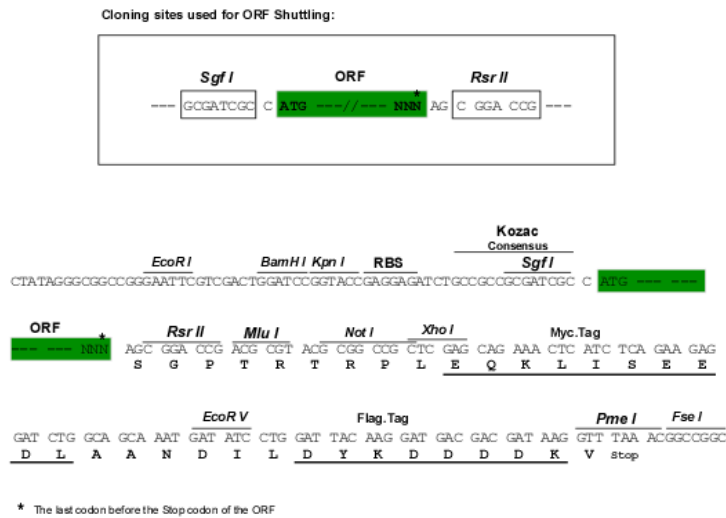
MPGVCDRAPDFLSPSEDQVLRPALGSSVALNCTAWVVSOPHCPSVQWLKDGLPLGIGGHYSLHEYSWV
 KANLSEVLVSSVLGVNVTSTEVYGAFTCSIQNISSFSTLQRAGPTSHVAVLASLLVLLALLAALLYV
 KCRLNVLWYQDAYGEVEINDGKLYDAYVSYSDCPEDRKFVNFILKPQLERRRGYKFLDDDRLLPRAEP
 SADLLVNL SRCRLIVLSDAFLSRAWCSHSFREGLCRLELTRRPIFITFEGQRRDPAHPALRLLRQHR
 HLVTLLLWRPGSVTPSSDFWKEVQLALPRKVRYPVEGDPQTQLQDDKDPMLILGRVPEGRALDSEVDP
 DPEGDLGVRGPVFGPEPSAPPHTSGVSLGESRSSEVDVSDLGSRNYSARTDFYCLVSKDDM

SGPTRTRPLEQKLI SEEDLAANDILDYKDDDDKV

Chromatograms: https://cdn.origene.com/chromatograms/mk6190_d06.zip

Restriction Sites: SgfI-RsrII

Cloning Scheme:



ACCN: NM_001135054

ORF Size: 1230 bp

OTI Disclaimer: The molecular sequence of this clone aligns with the gene accession number as a point of reference only. However, individual transcript sequences of the same gene can differ through naturally occurring variations (e.g. polymorphisms), each with its own valid existence. This clone is substantially in agreement with the reference, but a complete review of all prevailing variants is recommended prior to use. [More info](#)

OTI Annotation: This clone was engineered to express the complete ORF with an expression tag. Expression varies depending on the nature of the gene.

Components: The ORF clone is ion-exchange column purified and shipped in a 2D barcoded Matrix tube containing 10ug of transfection-ready, dried plasmid DNA (reconstitute with 100 ul of water).

Reconstitution Method:

1. Centrifuge at 5,000xg for 5min.
2. Carefully open the tube and add 100ul of sterile water to dissolve the DNA.
3. Close the tube and incubate for 10 minutes at room temperature.
4. Briefly vortex the tube and then do a quick spin (less than 5000xg) to concentrate the liquid at the bottom.
5. Store the suspended plasmid at -20°C. The DNA is stable for at least one year from date of shipping when stored at -20°C.

RefSeq: [NM_001135054.1](#), [NP_001128526.1](#)

RefSeq Size: 1761 bp

RefSeq ORF: 1233 bp

Locus ID: 59307

UniProt ID: [Q6IA17](#)

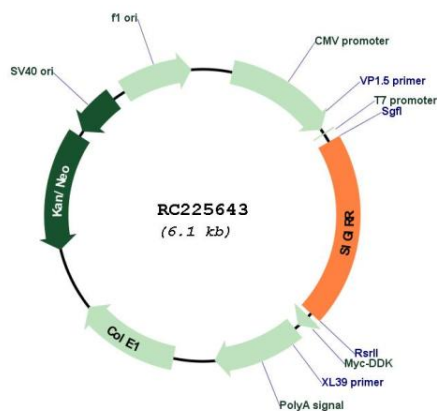
Cytogenetics: 11p15.5

Protein Families: Transcription Factors, Transmembrane

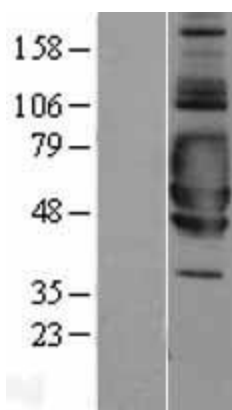
MW: 45.7 kDa

Gene Summary: Acts as a negative regulator of the Toll-like and IL-1R receptor signaling pathways. Attenuates the recruitment of receptor-proximal signaling components to the TLR4 receptor, probably through an TIR-TIR domain interaction with TLR4. Through its extracellular domain interferes with the heterodimerization of IL1R1 and IL1RAP.[UniProtKB/Swiss-Prot Function]

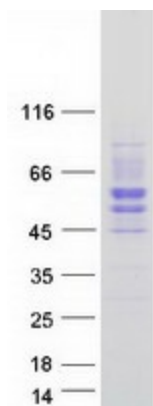
Product images:



Circular map for RC225643



Western blot validation of overexpression lysate (Cat# [LY427541]) using anti-DDK antibody (Cat# [TA50011-100]). Left: Cell lysates from untransfected HEK293T cells; Right: Cell lysates from HEK293T cells transfected with RC225643 using transfection reagent MegaTran 2.0 (Cat# [TT210002]).



Coomassie blue staining of purified SIGIRR protein (Cat# [TP325643]). The protein was produced from HEK293T cells transfected with SIGIRR cDNA clone (Cat# RC225643) using MegaTran 2.0 (Cat# [TT210002]).