

## Product datasheet for **RC225642**

### SIGIRR (NM\_001135053) Human Tagged ORF Clone

#### Product data:

**Product Type:** Expression Plasmids  
**Product Name:** SIGIRR (NM\_001135053) Human Tagged ORF Clone  
**Tag:** Myc-DDK  
**Symbol:** SIGIRR  
**Synonyms:** IL-1R8; TIR8  
**Mammalian Cell Selection:** Neomycin  
**Vector:** pCMV6-Entry (PS100001)  
**E. coli Selection:** Kanamycin (25 ug/mL)  
**ORF Nucleotide Sequence:** >RC225642 ORF sequence  
 Red=Cloning site Blue=ORF Green=Tags(s)

TTTTGTAATACGACTCACTATAGGGCGGCCGGAATTCGTCGACTGGATCCGGTACCGAGGAGATCTGCC  
 GCC**CGATCGCC**

ATGCCAGGTGTCTGTGATAGGGCCCTGACTTCCTCTCCCGTCTGAAGACCAGGTGCTGAGGCCTGCCT  
 TGGGCAGCTCAGTGGCTCTGAAGTGCACGGCTTGGGTAGTCTCTGGGCCCACTGCTCCCTGCCTCAGT  
 CCAGTGGCTGAAAGACGGGCTTCCATTGGGAATTGGGGCCACTACAGCCTCCACGAGTACTCCTGGGTC  
 AAGGCCAACCTGTCAGAGGTGCTTGTGTCCAGTGTCTGGGGTCAACGTGACCAGCACTGAAGTCTATG  
 GGGCTTACCTGCTCCATCCAGAACATCAGCTTCTCCTCCTTCACTCTCAGAGAGCTGGCCCTACAAG  
 CCAGTGGCTGCGGTGCTGGCCTCCCTCCTGGTCTGCTGGCCCTGCTGCTGGCCGCCCTGCTCTATGTC  
 AAGTGGCGTCTAACGTGCTGCTCTGGTACCAGGACGCGTATGGGGAGGTGGAGATAAACGACGGGAAGC  
 TCTACGACGCTACGTCTCTACAGCGACTGCCCGAGGACCGCAAGTTCGTGAACCTTATCCTAAAGCC  
 GCAGCTGGAGCGGCTCGGGCTACAAGCTTCTCCTGGACGACCGGACCTCCTGCCGCGCTGAGCCC  
 TCCGCCGACCTCTTGGTGAACCTGAGCCGCTGCCGACGCTCATCGTGGTGTCTTCGGACGCTTCTCTGA  
 GCCGGGCTGGTGCAGCCACAGCTTCCGGGAGGGCCTGTGCCGGTGTGGAGCTCACCCGAGACCCAT  
 CTTATCACCTTCGAGGGCCAGAGGCGCACCCCGCGCACCCGGCGCTCCGCTGCTGCCAGCACCCGC  
 CACTGGTGACCTTGTCTCTGGAGGCCGGCTCCGTGACTCCTTCTCCGATTTTTGGAAAGAAGTGC  
 AGCTGGCGCTGCCGCGGAAGGTGCGGTACAGCCGGTGAAGGAGACCCAGACGAGCTGCAGGACGA  
 CAAGGACCCATGCTGATTCTTCAGGGCCGAGTCCCTGAGGGCCGGGCCCTGGACTCAGAGGTGGACCCG  
 GACCTGAGGGGACCTGGGTGTCCGGGGCTGTTTTGGAGAGCCATCAGCTCCACCGCACACAGTGC  
 GGGTCTCGCTGGGAGAGCCGGAGCAGCGAAGTGGAGTCTCGGATCTCGGCTCGCGAACTACAGTGC  
 CCGCACAGACTTCTACTGCTGTGTTCAAGGATGATG

AG**CGGACCG**ACGCGTACGCGGCCGCTCGAGCAGAACTCATCTCAGAAGAGGATCTGGCAGCAAATGATATCC  
 TGGATTACAAGGATGACGACGATAAGGTTTAA



[View online >](#)

**Protein Sequence:** >RC225642 protein sequence  
Red=Cloning site Green=Tags(s)

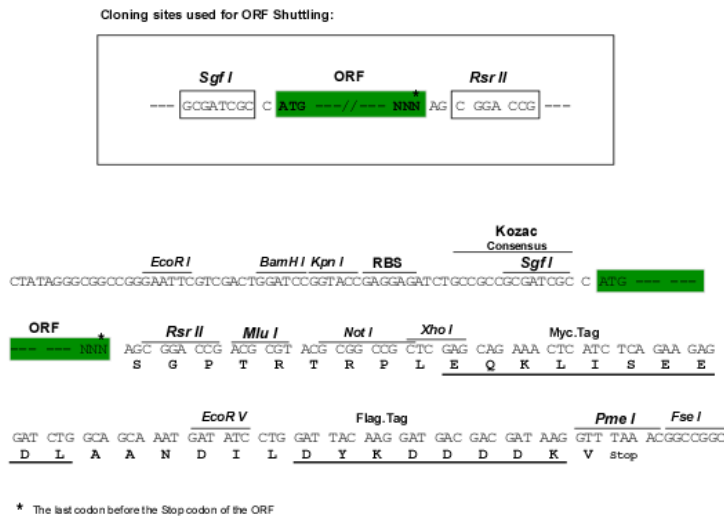
MPGVCDRAPDFLSPSEDQVLRPALGSSVALNCTAWVVSOPHCPSVQWLKDGLPLGIGGHYSLHEYSWV  
 KANLSEVLVSSVLGVNVTSTEVYGAFTCSIQNISSFSTLQRAGPTSHVAVLASLLVLLALLLAALLYV  
 KCRLNVLWYQDAYGEVEINDGKLYDAYVSYSDCPEDRKFVNFILKPQLERRRGYKFLDDDRLLPRAEP  
 SADLLVNL SRCRLIVLSDAFLSRAWCSHSFREGLCRLELTRRPIFITFEGQRRDPAHPALRLLRQHR  
 HLVTLLLRPGSVTPSSDFWKEVQLALPRKVRYPVEGDPQTQLQDDKDPMLILGRVPEGRALDSEVDP  
 DPEGDLGVRGPVFGPEPSAPPHTSGVSLGESRSSEVDVSDLGSRNYSARTDFYCLVSKDDM

SGPTRTRPLEQKLI SEEDLAANDILDYKDDDDKV

**Chromatograms:** [https://cdn.origene.com/chromatograms/mk6190\\_d06.zip](https://cdn.origene.com/chromatograms/mk6190_d06.zip)

**Restriction Sites:** SgfI-RsrII

**Cloning Scheme:**



**ACCN:** NM\_001135053

**ORF Size:** 1230 bp

**OTI Disclaimer:** The molecular sequence of this clone aligns with the gene accession number as a point of reference only. However, individual transcript sequences of the same gene can differ through naturally occurring variations (e.g. polymorphisms), each with its own valid existence. This clone is substantially in agreement with the reference, but a complete review of all prevailing variants is recommended prior to use. [More info](#)

**OTI Annotation:** This clone was engineered to express the complete ORF with an expression tag. Expression varies depending on the nature of the gene.

**Components:** The ORF clone is ion-exchange column purified and shipped in a 2D barcoded Matrix tube containing 10ug of transfection-ready, dried plasmid DNA (reconstitute with 100 ul of water).

**Reconstitution Method:**

1. Centrifuge at 5,000xg for 5min.
2. Carefully open the tube and add 100ul of sterile water to dissolve the DNA.
3. Close the tube and incubate for 10 minutes at room temperature.
4. Briefly vortex the tube and then do a quick spin (less than 5000xg) to concentrate the liquid at the bottom.
5. Store the suspended plasmid at -20°C. The DNA is stable for at least one year from date of shipping when stored at -20°C.

**RefSeq:** [NM\\_001135053.1](#), [NP\\_001128525.1](#)

**RefSeq Size:** 1688 bp

**RefSeq ORF:** 1233 bp

**Locus ID:** 59307

**UniProt ID:** [Q6IA17](#)

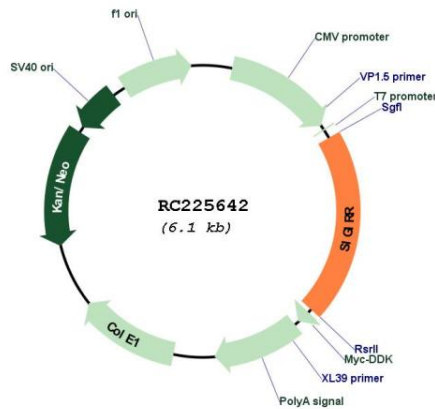
**Cytogenetics:** 11p15.5

**Protein Families:** Transcription Factors, Transmembrane

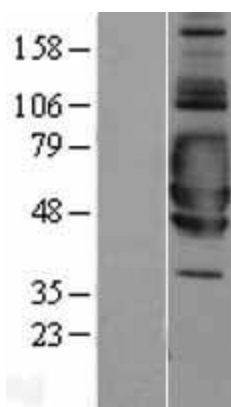
**MW:** 45.7 kDa

**Gene Summary:** Acts as a negative regulator of the Toll-like and IL-1R receptor signaling pathways. Attenuates the recruitment of receptor-proximal signaling components to the TLR4 receptor, probably through an TIR-TIR domain interaction with TLR4. Through its extracellular domain interferes with the heterodimerization of IL1R1 and IL1RAP.[UniProtKB/Swiss-Prot Function]

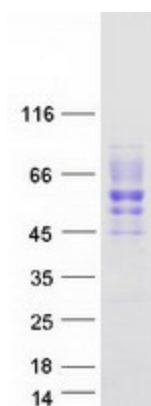
**Product images:**



Circular map for RC225642



Western blot validation of overexpression lysate (Cat# [LY427541]) using anti-DDK antibody (Cat# [TA50011-100]). Left: Cell lysates from untransfected HEK293T cells; Right: Cell lysates from HEK293T cells transfected with [RC225642] using transfection reagent MegaTran 2.0 (Cat# [TT210002]).



Coomassie blue staining of purified SIGIRR protein (Cat# [TP325642]). The protein was produced from HEK293T cells transfected with SIGIRR cDNA clone (Cat# RC225642) using MegaTran 2.0 (Cat# [TT210002]).