

Product datasheet for **RC225641**

CLIC5 (NM_001114086) Human Tagged ORF Clone

Product data:

Product Type: Expression Plasmids
Product Name: CLIC5 (NM_001114086) Human Tagged ORF Clone
Tag: Myc-DDK
Symbol: CLIC5
Synonyms: DFNB102; DFNB103; MST130; MSTP130
Mammalian Cell Selection: Neomycin
Vector: pCMV6-Entry (PS100001)
E. coli Selection: Kanamycin (25 ug/mL)
ORF Nucleotide Sequence: >RC225641 representing NM_001114086
 Red=Cloning site Blue=ORF Green=Tags(s)

TTTTGTAATACGACTCACTATAGGGCGGCCGGAATTCGTCGACTGGATCCGGTACCGAGGAGATCTGCC
 GCC**CGATCGCC**

ATGAATGACGAAGACTACAGCACCATCTATGACACAATCCAAAATGAGAGGACGTATGAGGTTCCAGACC
 AGCCAGAAGAAAATGAAAGTCCCCATTATGATGATGTCCATGAGTACTTAAGGCCAGAAAATGATTTATA
 TGCCACTCAGCTGAATACCCATGAGTATGATTTGTGTCAGTCTATACCATTAAGGGTGAAGAGACCAGC
 TTGGCCTCTGTCCAGTCAGAAGACAGAGGCTACCTCCTGCCTGATGAGATATACTCTGAAGTCCAGGAGG
 CTCATCCAGGTGAGCCCCAGGAGGACAGGGGCATCTCAATGGAAGGGTTATATTCATCAACCCAGGACCA
 GCAACTCTGCGCAGCAGAACTCCAGGAGAATGGGAGTGTGATGAAGGAAGATCTGCCTTCTCCTCAAGC
 TTCACCATTACAGCACAGTAAGGCCTTCTCTACCAAGTATTCTGCTATTCTGATGCTGAAGGTTTGG
 AAGAAAAGGAGGGAGCTCACATGAACCTGAGATTTACCTCTTTGTGAAGGCTGGAATCGATGGAGAAA
 CATCGGCAACTGTCTTTCTCTCAGCGCCTCTTCATGATCCTCTGGCTGAAAGGAGTCGTGTTCAATGTC
 ACCACTGTGGATCTGAAAAGAAAGCCAGCTGACCTGCACAACCTAGCCCCGGCACGCACCCGCCCTTCC
 TGACCTTCAACGGGGACGTGAAGACAGACGTCAATAAGATCGAGGAGTTCCTGGAGGAGACCTTGACCCC
 TGAAAAGTACCCCAAACCTGGCTGCAAAACACCGGAATCCAACACAGCGGCATCGACATCTTTTCCAAG
 TTTTCTGCCTACATCAAAAATACCAAGCAGCAGAACAATGCTGCTTTGAAAGAGGCCTAACCAAGGCTC
 TAAAGAAATTGGATGACTACCTGAACACCCTCTACCAGAGGAGATTGACGCCAACACTTGTGGGGAAGA
 CAAGGGTCCCAGCAAGTTCCTGGATGGGGATGAGCTGACCCTGGCTGACTGCAATCTGTTGCCCAAG
 CTCCATGTGGTCAAGATTGTGGCCAAGAAATACCGCAACTATGATATCCCGGCTGAGATGACAGGCTGT
 GGCGGTACCTCAAGAACGCCTATGCCCGTGATGAGTTCACCAACACCTGTGCAGCTGACAGTGAATCGA
 GTTGGCTACGCTGATGTCGCCAACGCCTCAGCCGATCC

ACGCGTACGCGGCCGCTCGAGCAGAAACTCATCTCAGAAGAGGATCTGGCAGCAAATGATATCCTGGATT
 ACAAGGATGACGACGATAAGGTTTAA



Protein Sequence: >RC225641 representing NM_001114086
 Red=Cloning site Green=Tags(s)

MNDEDYSTIYDTIQNERTYEVPDQPEENESPHYDDVHEYLRPENDLYATQLNTHEYDFVSVYTIKGEETS
 LASVQSEDRGYLLPDEIYSELQEAHPGEPQEDRGISMEGLYSSTQDQQLCAAELQNGSVMKEDLPSPSS
 FTIQHSKAFSTTKYSCYSDAEGLEEKGAHMNPEIYLFVKAGIDGESIGNCPFSQRLFMILWLKGVVFNV
 TTVDLKRKPADLHNLAPGTHPPFLT FNQDVKTDVKNKIEEFLEETLTPEKYPKLAAKHRESNTAGIDIFSK
 FSAYIKNTKQNNAAALERGLTKALKKLDLYLNTPLPEEIDANTCGEDKGSRRKFLDGDDELTLADCNLLPK
 LHVVKIVAKKYRNYDIPAEMTGLWRYLKNAYARDEF TNTCAADSEIELAYADVAKRLSRS

TRTRPLEQKLISEEDLAANDILDYKDDDDKV

Restriction Sites:

SgfI-MluI

Cloning Scheme:

Cloning sites used for ORF Shuttling:



* The last codon before the Stop codon of the ORF

ACCN: NM_001114086

ORF Size: 1230 bp

OTI Disclaimer: The molecular sequence of this clone aligns with the gene accession number as a point of reference only. However, individual transcript sequences of the same gene can differ through naturally occurring variations (e.g. polymorphisms), each with its own valid existence. This clone is substantially in agreement with the reference, but a complete review of all prevailing variants is recommended prior to use. [More info](#)

OTI Annotation: This clone was engineered to express the complete ORF with an expression tag. Expression varies depending on the nature of the gene.

Components: The ORF clone is ion-exchange column purified and shipped in a 2D barcoded Matrix tube containing 10ug of transfection-ready, dried plasmid DNA (reconstitute with 100 ul of water).

Reconstitution Method:

1. Centrifuge at 5,000xg for 5min.
2. Carefully open the tube and add 100ul of sterile water to dissolve the DNA.
3. Close the tube and incubate for 10 minutes at room temperature.
4. Briefly vortex the tube and then do a quick spin (less than 5000xg) to concentrate the liquid at the bottom.
5. Store the suspended plasmid at -20°C. The DNA is stable for at least one year from date of shipping when stored at -20°C.

RefSeq: [NM_001114086.2](#)

RefSeq ORF: 1233 bp

Locus ID: 53405

UniProt ID: [Q9NZA1](#)

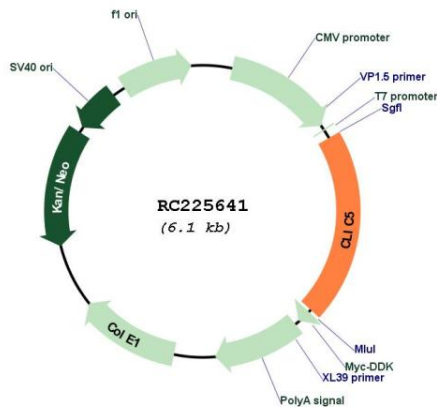
Cytogenetics: 6p21.1

Protein Families: Druggable Genome, Ion Channels: Other

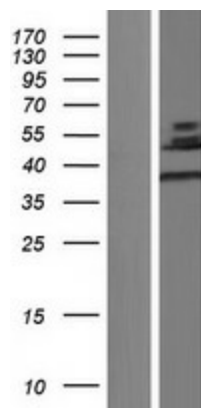
MW: 46.3 kDa

Gene Summary: This gene encodes a member of the chloride intracellular channel (CLIC) family of chloride ion channels. The encoded protein associates with actin-based cytoskeletal structures and may play a role in multiple processes including hair cell stereocilia formation, myoblast proliferation and glomerular podocyte and endothelial cell maintenance. Alternatively spliced transcript variants encoding multiple isoforms have been observed for this gene. [provided by RefSeq, Dec 2011]

Product images:



Circular map for RC225641



Western blot validation of overexpression lysate (Cat# [LY426442]) using anti-DDK antibody (Cat# [TA50011-100]). Left: Cell lysates from untransfected HEK293T cells; Right: Cell lysates from HEK293T cells transfected with RC225641 using transfection reagent MegaTran 2.0 (Cat# [TT210002]).