

Product datasheet for **RC225637**

METT5D1 (METTL15) (NM_001113528) Human Tagged ORF Clone

Product data:

Product Type:	Expression Plasmids
Product Name:	METT5D1 (METTL15) (NM_001113528) Human Tagged ORF Clone
Tag:	Myc-DDK
Symbol:	METT5D1
Synonyms:	METT5D1
Mammalian Cell Selection:	Neomycin
Vector:	pCMV6-Entry (PS100001)
E. coli Selection:	Kanamycin (25 ug/mL)
ORF Nucleotide Sequence:	>RC225637 representing NM_001113528 Red=Cloning site Blue=ORF Green=Tags(s)

TTTTGTAATACGACTCACTATAGGGCGGCCGGAATTCGTCGACTGGATCCGGTACCGAGGAGATCTGCCGCC**CGATCGCC**

ATGCTTCGGTATCCATATTTTTGTAGAATGTATAAAGAATGCCTTTCATGTTGGTTGGAATCTGGCATACTAATTTAGGTGTCTGGCCAAACAGAATACATACTACAGCAGAAAAATATAGAGAATATGAAGCCCGGAGCAAACAGATCAAACCAAGCCCAGGAGTTACACAGATCTCAAGATAGAGATTTTAACTATGGCTAAATACATATCCAGTAATGGTGGATGAAGTTGTTTCATTGTTTGTCCACCACAAAAGGACAGATTTTCTAGATATGACATTTGGTTCGGGAGGGCACACAAAAGCCATTCTGCAGAAGGAGTCAGATATTGTTCTCTATGCTTGACAGAGACCCAACAGCTTATGCATTAGCTGAACATCTTTTCAGAGTTGTATCCTAAACAAATCCGAGCTATGCTGGCCAGTTCAGCCAGGCAGAACCTTATAATGAAAGCTGGAGTGCAGCCAGGAACCTTTGATGGAGTCTTATGGATCTTGGGTGTTCCCTCCATGCAACTTGATACTCCTGAAAGAGTTTTTCCCTTCGAAAGATGGCCCTTTGGACATGAGAAATGGATGGTGGCAGGTACCCTGACATGCCCACTGCTGCTGATGTTGTGAATGCTTTAGATCAACAGGCACTTGCATCTATCCTAAGAACATACGGGGAGGAGAAGCATGCCAAGA AAATCGCTTCAGCAATTGTTTCAGGCACGCAGCATCTACCCCATCACCAGAACCAGCAGCTTGCCAGCATCGTTGCAGGAGCATTTCCCTCCCTCTGCTATTTATACACGGAAAGACTTACTACAGCGATCTACCCATATTGCCACCAAGACTTCCAGGCTCTTCGCATATTTGTGAACAATGAGCTCAATGAACCTACACGGGACTGAGACAGCTCAGAAAGTTTCTGAGACCTGGTGGTCGTCCTTGTGGCCCTCCTTCCATTCACTAGAGGATCGCATCGTCAAAAGATTTTTGCTTGAATAAGCATGACAGAAAGATTTAACCTAAGTGTAGACAACAAGTGTGAAACATCTCAATTGGGTTTCAGATCACGAAAAACGGAAGAAGTCTCTATGAGAAGAGCTCCTTTAATGTGGGAATTGATACACAAGAAGTACTTAGTCCACAAGATCAGGATGTACAAGATAACCCAGAGGGCCCTCAGCCAAGCTTAGAGCAGCTATCAAATTA

ACGCGTACGCGGCCGCTCGAGCAGAAACTCATCTCAGAAGAGGATCTGGCAGCAAATGATATCCTGGATTACAAGGATGACGACGATAAGGTTTAA



[View online >](#)

Protein Sequence: >RC225637 representing NM_001113528
Red=Cloning site Green=Tags(s)

MLRYPYFCRMYKECLSCWLESGIPNLGVWPNIHTTAEKYREYEAREQTDQTQAQELHRSQDRDFETMAK
 LHIPVMVDEVHCLSPQKGQIFLDMTFGSGGHTKAILQKESDIVLYALDRDPTAYALAEHLSELYPKQIR
 AMLGQFSQAEALLMKAGVQPGTFDGLMDLGCSSMQLDTPERGFSLRKDGPLDMRMDGGRYPDMPATAADV
 VNALDQQALASILRTYGEKHAKKIASAIVQARSIYPIITRTQQLASIVAGAFPPSAIYTRKDLLQRSTHI
 ATKTFQALRIFVNNELNELYTGLKTAQKFLRPGGRLVALSFHSLIEDRIVKRFLLGISMTERFNLSVRQQV
 MKTSQLGSDHENTEEVSMRRAPLMWELIHKKVLSPQDQDVQDNPRGRSAKLRAAIKL

TRTRPLEQKLISEEDLAANDILDYKDDDDKV

Chromatograms: https://cdn.origene.com/chromatograms/mk8034_g02.zip

Restriction Sites: SgfI-MluI

Cloning Scheme:



* The last codon before the Stop codon of the ORF

ACCN: NM_001113528

ORF Size: 1221 bp

OTI Disclaimer: The molecular sequence of this clone aligns with the gene accession number as a point of reference only. However, individual transcript sequences of the same gene can differ through naturally occurring variations (e.g. polymorphisms), each with its own valid existence. This clone is substantially in agreement with the reference, but a complete review of all prevailing variants is recommended prior to use. [More info](#)

OTI Annotation: This clone was engineered to express the complete ORF with an expression tag. Expression varies depending on the nature of the gene.

Components: The ORF clone is ion-exchange column purified and shipped in a 2D barcoded Matrix tube containing 10ug of transfection-ready, dried plasmid DNA (reconstitute with 100 ul of water).

Reconstitution Method:

1. Centrifuge at 5,000xg for 5min.
2. Carefully open the tube and add 100ul of sterile water to dissolve the DNA.
3. Close the tube and incubate for 10 minutes at room temperature.
4. Briefly vortex the tube and then do a quick spin (less than 5000xg) to concentrate the liquid at the bottom.
5. Store the suspended plasmid at -20°C. The DNA is stable for at least one year from date of shipping when stored at -20°C.

RefSeq: [NM_001113528.2](#)

RefSeq ORF: 1224 bp

Locus ID: 196074

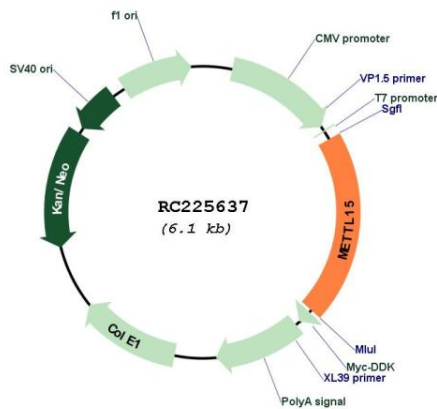
UniProt ID: [A6NJ78](#)

Cytogenetics: 11p14.1

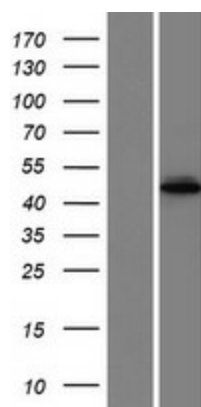
MW: 45.9 kDa

Gene Summary: Probable S-adenosyl-L-methionine-dependent methyltransferase.[UniProtKB/Swiss-Prot Function]

Product images:



Circular map for RC225637



Western blot validation of overexpression lysate (Cat# [LY426429]) using anti-DDK antibody (Cat# [TA50011-100]). Left: Cell lysates from untransfected HEK293T cells; Right: Cell lysates from HEK293T cells transfected with RC225637 using transfection reagent MegaTran 2.0 (Cat# [TT210002]).