

Product datasheet for **RC225634**

SLC35E2B (NM_001110781) Human Tagged ORF Clone

Product data:

Product Type: Expression Plasmids
Product Name: SLC35E2B (NM_001110781) Human Tagged ORF Clone
Tag: Myc-DDK
Symbol: SLC35E2B
Synonyms: SLC35E2
Mammalian Cell Selection: Neomycin
Vector: pCMV6-Entry (PS100001)
E. coli Selection: Kanamycin (25 ug/mL)
ORF Nucleotide Sequence: >RC225634 representing NM_001110781
Red=Cloning site Blue=ORF Green=Tags(s)

TTTTGTAATACGACTCACTATAGGGCGGCCGGAATTCGTCGACTGGATCCGGTACCGAGGAGATCTGCC
GCC**CGATCGCC**

ATGTCGTCCTCGGTGAAAACCCAGCACTGGAAGAGCTGGTTCCTGGCTCCGAAGAGAAGCCGAAAGGCA
GGTCGCTCTCAGCTGGGGCTCTGTTTGGTCACCGAAGTGAGAAGATTGTTTTGCAAGAGCGACGG
CGGCACAGATGAGAACGTAAGCACTGACCGTCACCATCACGGAGACCACGGTCATCGAGTCAGACTTGGGTGTG
TGGAGCTCGGGCGCTGCTCTACCTCACGCTGTGGTCTTCTTTCAGCTTCTGCACGCTCTTCTCAACA
AGTACATCTGTCCCTGTGGAGGCGAGCCAGCATGCTAGGTGCGGTGCAGATGCTGTCCACCACGGT
TATCGGGTGTGTGAAAACCTCGTTCCTTGTGTTGTATCAGCACAAGGCCCGCTTCTCCACCCACC
AACTTCCTTATGACGATGCTGTTTGTGGGTCTGATGAGGTTTGCAACTGTGGTTTTGGGTTTGGTACGC
TGAAAAATGTGGCGGTTTCGTTTGTGAGACGGTGAAGAGCTCCGCCCCATCTTACCGGTGATCATGTC
TCGGATGATTCTGGGGGAGTACACAGGGCTGCTGGTCAACCTCTCCCTCATCCCAGTCATGGGCGGGCTG
GCGCTGTGCACGGCCACTGAGATCAGCTTCAATGTCTGGGGTCTCGGCCGCACTGTCCACCAACATCA
TGGACTGTTTGAAAATGTTTTTCAAAAAAGCTGCTCAGCGGGGACAAATACAGGTTCTCGGCCCGGA
GCTGCAGTCTACACCAGCGCCGCTGCGGTGGCCATGCTCGTCCCGGCCGGGTTTTCTTACGGACGTC
CCAGTGATCGGGAGGAGTGGGAAGAGCTTACAGCTACAACCAGGACGTGGTGTCTGCTTCTGACAGACG
GAGTCTGTCCACCTTACAGCGCTCACGGCGTACGCCCTCATGGGAAAATCTCCCGGTGACTTTCAG
CGTCGCCAGCACCGTGAACATGCCTTGTCCATCTGGCTCAGCGTAATCGTTTTTCGGCAACAAGATCACC
AGCTTGTGCGCCGTTGGCACAGCCCTGGTACCGTTGGGGTCTGCTCTACAACAAGCCAGGCAACACC
AGCAGGAGGCGCTGCAGAGCCTGGCTGCAGCCACTGGCCGGGCCAGACGACACAGTGGAGCCGCTGCT
TCCACAGGACCCAGGCAGCATCCC

ACGCGTACGCGGCCGCTCGAGCAGAACTCATCTCAGAAGAGGATCTGGCAGCAAATGATATCTGGATT
ACAAGGATGACGACGATAAGGTTTAA



Protein Sequence: >RC225634 representing NM_001110781
 Red=Cloning site Green=Tags(s)

MSSSVKTPALEELVPGSEEKPKGRSPLSWGSLFGHRSEKIVFAKSDGGTDENVLTVTITETTIVIESDLGV
 WSSRALLYLTLWFFFSCFLFLNKYILSLLGGEPSMLGAVQMLSTTVIGCVKTLVPCCLYQHKARLSYPP
 NFLMTMLFVGLMRFATVVLGLVSLKNVAVSFAETVKSSAPIFTVIMSRMILGEYTGLLVNLVSLIPVMGGL
 ALCTATEISFNVLGFSALSTNIMDCLQNVFSKKLLSGDKYRFSAPELQFYTSAAAVAMLVPARVFFTDV
 PVIGRSGKFSYNQDVVLLLLLTDGVLFHLQSVTAYALMGKISPVTFVSVASTVKHALSIWLSVIVFGNKIT
 SLSAVGTALVTVGVLLYNKARQHQQEALQSLAAATGRAPDDTVEPLL PQDPRQHP

TRTRPLEQKLISEEDLAANDILDYKDDDDKV

Chromatograms: https://cdn.origene.com/chromatograms/mk8103_e11.zip

Restriction Sites: SgfI-MluI

Cloning Scheme:



ACCN: NM_001110781

ORF Size: 1215 bp

OTI Disclaimer: The molecular sequence of this clone aligns with the gene accession number as a point of reference only. However, individual transcript sequences of the same gene can differ through naturally occurring variations (e.g. polymorphisms), each with its own valid existence. This clone is substantially in agreement with the reference, but a complete review of all prevailing variants is recommended prior to use. [More info](#)

OTI Annotation: This clone was engineered to express the complete ORF with an expression tag. Expression varies depending on the nature of the gene.

Components: The ORF clone is ion-exchange column purified and shipped in a 2D barcoded Matrix tube containing 10ug of transfection-ready, dried plasmid DNA (reconstitute with 100 ul of water).

Reconstitution Method:

1. Centrifuge at 5,000xg for 5min.
2. Carefully open the tube and add 100ul of sterile water to dissolve the DNA.
3. Close the tube and incubate for 10 minutes at room temperature.
4. Briefly vortex the tube and then do a quick spin (less than 5000xg) to concentrate the liquid at the bottom.
5. Store the suspended plasmid at -20°C. The DNA is stable for at least one year from date of shipping when stored at -20°C.

RefSeq: [NM_001110781.3](#)

RefSeq Size: 6020 bp

RefSeq ORF: 1218 bp

Locus ID: 728661

UniProt ID: [Q5CZA4](#)

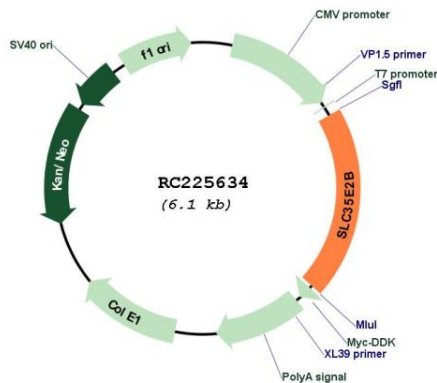
Cytogenetics: 1p36.33

Protein Families: Transmembrane

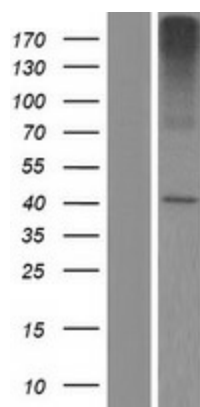
MW: 43.8 kDa

Gene Summary: Putative transporter.[UniProtKB/Swiss-Prot Function]

Product images:



Circular map for RC225634



Western blot validation of overexpression lysate (Cat# [LY426330]) using anti-DDK antibody (Cat# [TA50011-100]). Left: Cell lysates from untransfected HEK293T cells; Right: Cell lysates from HEK293T cells transfected with RC225634 using transfection reagent MegaTran 2.0 (Cat# [TT210002]).