

Product datasheet for **RC225629**

CRELD2 (NM_001135101) Human Tagged ORF Clone

Product data:

Product Type:	Expression Plasmids
Product Name:	CRELD2 (NM_001135101) Human Tagged ORF Clone
Tag:	Myc-DDK
Symbol:	CRELD2
Mammalian Cell Selection:	Neomycin
Vector:	pCMV6-Entry (PS100001)
E. coli Selection:	Kanamycin (25 ug/mL)
ORF Nucleotide Sequence:	>RC225629 representing NM_001135101 Red=Cloning site Blue=ORF Green=Tags(s)

TTTTGTAATACGACTCACTATAGGGCGGCCGGAATTCGTCGACTGGATCCGGTACCGAGGAGATCTGCC
GCC**CGATCGCC**

ATGCGCCTGCCGCGCCGGGCCGCGCTGGGGCTCCTGCCGTTCTGCTGCTGCTGCCGCCGCGCCGGAGG
CCGCCAAGAAGCCGACGCCCTGCCACCGGTGCCGGGGCTGGTGGACAAGTTAACCCAGGGGATGGTGG
CACCGCAAAGAAGAACTTTGGCGCGGGAAACACGGCTTGGGAGGAAAAGACGCTGTCCAAGTACGAGTCC
AGCGAGATTCGCCTGCTGGAGATCTGGAGGGGCTGTGCGAGAGCAGCGACTTCGAATGCAATCAGATGC
TAGAGGCGCAGGAGGAGCACCTGGAGCCCTGGTGGCTGCAGCTGAAGAGCGAATATCCTGACTTATTCGA
GTGGTTTTGTGTGAAGACTGAAAGTGTGCTGCTCTCCAGGAACCTACGGTCCCGACTGTCTCGCATGC
CAGGGCGGATCCCAGAGCCCTGCAGCGGAATGGCCACTGCAGCGGAGATGGGAGCAGACAGGGCGACG
GGTCTGCCGGTGCCACATGGGGTACCAGGGCCCCTGTGCAGTACTGCATGGACGGCTACTTCAGCTC
GCTCCGGAACGAGACCCACAGCATCTGCACAGTACAGGACCGCCCTCTCCGATTCTTACCCGCCTTGTGT
CTGTCTTTGGATGTTGGCGTGGCGTGGCCACGCATGGATCCGTGGCCGGAACACGCACACCCAGCCAG
GCTACAGTCCAGAGTATGGATAGCTGCCTTCTCTCCAGCCTGTGACGAGTCTGCAAGACGTGCTCGGG
CCTGACCAACAGAGACTGCGGCGAGTGTGAAGTGGGCTGGGTGCTGGACGAGGGCGCCTGTGTGGATGTG
GACGAGTGTGCGCCGAGCCGCCTCCCTGCAGCGCTGCGCAGTTCTGTAAGAACGCCAACGGCTCCTACA
CGTGCGAAGAGTGTGACTCCAGCTGTGTGGGCTGCACAGGGGAAGGCCAGGAACTGTAAGAGTGTAT
CTCTGGCTACGCGAGGGAGCAGGACAGTGTGCAGATGTGGACGAGTGTCACTAGCAGAAAAAACCCTGT
GTGAGGAAAAACGAAAACCTGCTACAATACTCCAGGGAGCTACGTCTGTGTGTCTGACGGCTTCGAAG
AAACGGAAGATGCCTGTGTGCCCGCCGAGAGGCTGAAGCCACAGAAGGAGAAAGCCCGACACAGCTGCC
CTCCCGGAAGACCTG

ACGCGTACGCGGGCCGCTCGAGCAGAAAACCTCATCTCAGAAGAGGATCTGGCAGCAAATGATATCCTGGATT
ACAAGGATGACGACGATAAAGGTTTAA



[View online »](#)

Protein Sequence: >RC225629 representing NM_001135101
Red=Cloning site Green=Tags(s)

MRLPRRAALGLLPLLLLLPPAPEAAKKPTPCHRCRGLVDKFNQGMVDTAKKNFGGGNTAWEEKLSKYES
 SEIRLLEILEGLCESSDFECNQMLEAQEEHLEAWWLQLKSEYDPLFEWFCVKTLKVVCCSPGTYGPDCLAC
 QGGSQRPCSGNGHCSGDGSRQGDGSCRCHMGYQGFLCTDCMDGYFSSLRNETHSICTVVRTGLSDSYPPCC
 LSLGCWRGVGHAWIRGRNTHTPQGYSSRVWIAAFSPACDECKTCSGLTNRDCGECEVGVWVLDGACVDV
 DECAAEPPPCSAAQFCKNANGSYTCEECDSSCVGCTGEGPGNCKECISGYAREHGQCADVDECSLAEKTC
 VRKNENCYNTPGSYVVCVCPDGFEEETEDACVPPAEAEATEGESPTQLPSREDL

TRTRPLEQKLISEEDLAANDILDYKDDDDKV

Chromatograms: https://cdn.origene.com/chromatograms/mk8057_e06.zip

Restriction Sites: SgfI-MluI

Cloning Scheme:

Cloning sites used for ORF Shuttling:



* The last codon before the Stop codon of the ORF

ACCN: NM_001135101

ORF Size: 1206 bp

OTI Disclaimer: The molecular sequence of this clone aligns with the gene accession number as a point of reference only. However, individual transcript sequences of the same gene can differ through naturally occurring variations (e.g. polymorphisms), each with its own valid existence. This clone is substantially in agreement with the reference, but a complete review of all prevailing variants is recommended prior to use. [More info](#)

OTI Annotation: This clone was engineered to express the complete ORF with an expression tag. Expression varies depending on the nature of the gene.

Components: The ORF clone is ion-exchange column purified and shipped in a 2D barcoded Matrix tube containing 10ug of transfection-ready, dried plasmid DNA (reconstitute with 100 ul of water).

Reconstitution Method:

1. Centrifuge at 5,000xg for 5min.
2. Carefully open the tube and add 100ul of sterile water to dissolve the DNA.
3. Close the tube and incubate for 10 minutes at room temperature.
4. Briefly vortex the tube and then do a quick spin (less than 5000xg) to concentrate the liquid at the bottom.
5. Store the suspended plasmid at -20°C. The DNA is stable for at least one year from date of shipping when stored at -20°C.

RefSeq: [NM_001135101.3](#)

RefSeq ORF: 1209 bp

Locus ID: 79174

UniProt ID: [Q6UXH1](#)

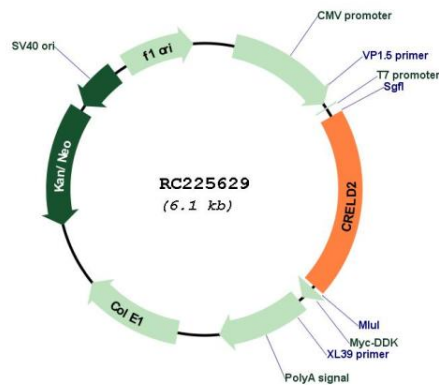
Cytogenetics: 22q13.33

Protein Families: Druggable Genome, Secreted Protein

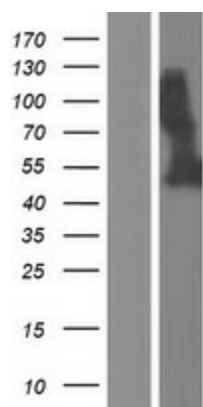
MW: 43.4 kDa

Gene Summary: May regulate transport of alpha4-beta2 neuronal acetylcholine receptor.[UniProtKB/Swiss-Prot Function]

Product images:



Circular map for RC225629



Western blot validation of overexpression lysate (Cat# [LY427551]) using anti-DDK antibody (Cat# [TA50011-100]). Left: Cell lysates from untransfected HEK293T cells; Right: Cell lysates from HEK293T cells transfected with RC225629 using transfection reagent MegaTran 2.0 (Cat# [TT210002]).