

## Product datasheet for RC225626

### CRPPA (NM\_001101417) Human Tagged ORF Clone

#### Product data:

**Product Type:** Expression Plasmids  
**Product Name:** CRPPA (NM\_001101417) Human Tagged ORF Clone  
**Tag:** Myc-DDK  
**Symbol:** CRPPA  
**Synonyms:** hiSPD; ISPD; LGMDR20; MDDGA7; MDDGC7; Nip  
**Mammalian Cell Selection:** Neomycin  
**Vector:** pCMV6-Entry (PS100001)  
**E. coli Selection:** Kanamycin (25 ug/mL)  
**ORF Nucleotide Sequence:** >RC225626 representing NM\_001101417  
 Red=Cloning site Blue=ORF Green=Tags(s)

TTTTGTAATACGACTCACTATAGGGCGGCCGGAATTCGTCGACTGGATCCGGTACCGAGGAGATCTGCC  
 GCC**CGATCGCC**

ATGGAGGCCGGCCGCCGGGCAGCGCCAGGCCGGCGGAGCCGGTCTTGCCTGAGTGGTCAGCGCGGC  
 CGGACCACACGGCTTCCGCCTCCCTGCAGAGCGTGGCCGGGACCGAGCCCGGGCGCCACCCGCAAGCCGT  
 GGCAGCTGTGTTGCCCGGGGGTGCGGGAGAGGATGGGGTCCCCACCCGAAGCAATTCTGCCCC  
 ATCCTGGAGAGCCGCTCATCAGCTACACCCTACAGGCCCTGGAGAGATGTTGGATAAAGGACATTG  
 TTGTGGCAGTAAGTGGAGAGAACATGGAAGTAATGAAAAGTATTATTCAGAAGTATCAGCATAAAGCAT  
 CCACTGGTGAAGCTGGAGTGACCCGCCACAGGTCAATTTTCAATGGACTAAAAGCACTGGCAGAAGAT  
 CAGATCAACTCTAACTCTTAAGCCAGAAGTAGTGATTATCCATGATGCTGTGAGACCATTGTTGAGG  
 AAGGTGTCCTTCTAAAGTTGTCACAGCTGCTAAGGAACACGGGTGTAGTGACTATGACTTGAATTTGG  
 AACTGAGTGTGCAATTGGCCCTAAAATACTGTTGCACTAAAGCCAACTTGTAGAAGGATCACCTGAC  
 CTCTGGAAGGTGACCTACAAACGAGATCTATGCGGTGAATCGATTATTAAGGAGAGAATTTCCCAAG  
 AGATTTGTGTAGTTATGGATACAGAAGAAGATAACAAACATGTAGGTCACTTCTTGAAGAAGTGCTGAA  
 AAGTGAATTAATCATGTAAGTACACATCTGAGGCTCTGGTCACTGCTGGCAGACATCTCAGCAAATC  
 ATCTTAGATCAATGCTACAATTTGTTTGTGTAATGTTACAACCTCTGATTTTCAAGAAACCCAGAAGT  
 TACTGAGCATGCTTGAAGAGAGTAGTCTTTCATTTTATATCCTGTTGTTGTTTCAGTTCATTTTCT  
 TGATTTTAAATTAGTACCTCCAGTCAGAAAATGAAAACCTAATGCAGATTAGAGAATTTGCAAAGGAA  
 GTAAAAGAAAGAAATATTTGTTATATGGGCTTCTCATATCTTACCCACAGGATGATCAGAAGCTACAGG  
 AGAGTTTAAAGCAAGGTGCTATCATTATTGCTTCATTAATCAAGGAAAGAAATCTGGACTATTGGTCA  
 GCTTCTGATAGCA

**ACGCGT**ACGCGGCCGCTCGAGCAGAACTCATCTCAGAAGAGGATCTGGCAGCAAATGATATCTGGATT  
 ACAAGGATGACGACGATAAGGTTTAA



[View online »](#)



**Reconstitution Method:**

1. Centrifuge at 5,000xg for 5min.
2. Carefully open the tube and add 100ul of sterile water to dissolve the DNA.
3. Close the tube and incubate for 10 minutes at room temperature.
4. Briefly vortex the tube and then do a quick spin (less than 5000xg) to concentrate the liquid at the bottom.
5. Store the suspended plasmid at -20°C. The DNA is stable for at least one year from date of shipping when stored at -20°C.

**RefSeq:** [NM\\_001101417.4](#)

**RefSeq ORF:** 1206 bp

**Locus ID:** 729920

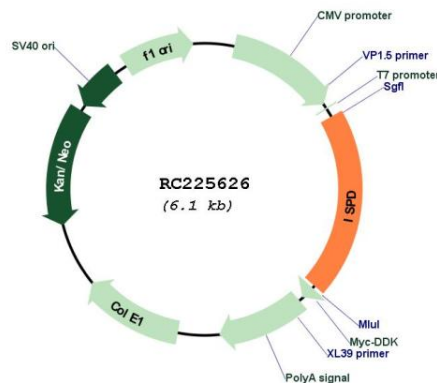
**UniProt ID:** [A4D126](#)

**Cytogenetics:** 7p21.2

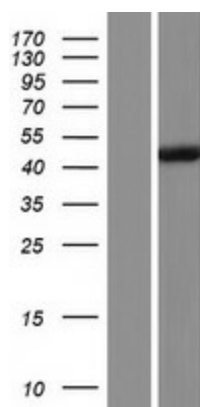
**MW:** 44.2 kDa

**Gene Summary:** This gene encodes a 2-C-methyl-D-erythritol 4-phosphate cytidyltransferase-like protein. Mutations in this gene are the cause of Walker-Warburg syndrome. Alternate splicing results in multiple transcript variants. [provided by RefSeq, May 2012]

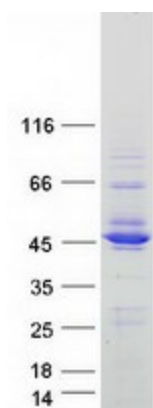
### Product images:



Circular map for RC225626



Western blot validation of overexpression lysate (Cat# [LY426159]) using anti-DDK antibody (Cat# [TA50011-100]). Left: Cell lysates from untransfected HEK293T cells; Right: Cell lysates from HEK293T cells transfected with RC225626 using transfection reagent MegaTran 2.0 (Cat# [TT210002]).



Coomassie blue staining of purified CRPPA protein (Cat# [TP325626]). The protein was produced from HEK293T cells transfected with CRPPA cDNA clone (Cat# RC225626) using MegaTran 2.0 (Cat# [TT210002]).