

Product datasheet for RC225622

Lysosomal acid lipase (LIPA) (NM_001127605) Human Tagged ORF Clone

Product data:

Product Type:	Expression Plasmids
Product Name:	Lysosomal acid lipase (LIPA) (NM_001127605) Human Tagged ORF Clone
Tag:	Myc-DDK
Symbol:	Lysosomal acid lipase
Synonyms:	CESD; LAL
Mammalian Cell Selection:	Neomycin
Vector:	pCMV6-Entry (PS100001)
E. coli Selection:	Kanamycin (25 ug/mL)
ORF Nucleotide Sequence:	>RC225622 representing NM_001127605 Red=Cloning site Blue=ORF Green=Tags(s)

TTTTGTAATACGACTCACTATAGGGCGCCGGAATTCGTCGACTGGATCCGGTACCGAGGAGATCTGCC
GCC**CGATCGCC**

ATGAAATGCGGTTCTTGGGGTTGGTGGTCTGTTTGGTTCTCTGGACCCTGCATTCTGAGGGTCTGGAG
GGAACACTGACAGCTGTGGATCCTGAAACAAACATGAATGTGAGTGAAATTATCTTACTGGGGATTCCC
TAGTGAGGAATACCTAGTTGAGACAGAAGATGGATATATCTGTGCCTTAACCGAATTCCTCATGGGAGG
AAGAACCATTCTGACAAAGGTCCCAACAGCTTGTCTTCTGCAACATGGCTTGCTGCCAGATTCTAGTA
ACTGGGTCAAAACCTTGCCAACAGCAGCCTGGGCTTCATTCTTGCTGATGCTGGTTTTGACGTGTGGAT
GGCAACAGCAGAGGAAATACCTGGTCTCGGAAACATAAGACACTCTCAGTTTCTCAGGATGAATTCGG
GCTTTCAGTTATGATGAGATGGCAAAATATGACCTACCAGCTTCCATTAACCTTATTCTGAATAAACTG
GCCAAGAACAAGTGATTTATGTGGGTCACTCTCAAGGCACCACTATAGGTTTTATAGCATTTTCACAGAT
CCCTGAGCTGGCTAAAAGGATTAATGTTTTTGGCCCTGGTCTGTGGCTTCCGTCGCTTCTGTACT
AGCCCTATGGCCAAATAGGACGATTACCAGATCATCTCATTAAAGGACTTATTTGGAGACAAAGAATTC
TCCCCAGAGTGCCTTTTGAAGTGGCTGGGTACCCACGTTTGCCTCATGTCATACTGAAGGAGCTCTG
TGGAAATCTCTGTTTCTCTGTGTGGATTTAATGAGAGAAATTTAAATATGTCTAGAGTGGATGTATAT
ACAACACTTCTCTGCTGGAACCTCTGTGCAAAACATGTTACACTGGAGCCAGCTGTTAAATCCAAA
AGTTTTCAAGCCTTTGACTGGGGAAGCAGTGCCAAGAATTTTTCATTACAACCAGAGTTATCCTCCAC
ATACAATGTGAAGGACATGCTTGTGCCGACTGCAGTCTGGAGCGGGGTACGACTGGCTTGACAGATGTC
TACGACGTCAATATCTTACTGACTCAGATCACCAACTGGTGTCCATGAGAGCATTCCGGAATGGGAGC
ATCTTGACTTCATTTGGGCCTGGATGCCCTTGGAGGCTTTATAATAAAATTATTAATCTAATGAGGAA
ATATCAG

ACGCGTACGCGGCCGCTCGAGCAGAACTCATCTCAGAAGAGGATCTGGCAGCAATGATATCCTGGATT
ACAAGGATGACGACGATAAGGTTTAA



[View online »](#)

Protein Sequence: >RC225622 representing NM_001127605
Red=Cloning site Green=Tags(s)

MKMRFLGLVVCLVLWTLHSEGGGKLTAVDPETNMNVSEIISYWGFPSEEYL VETEDGYILCLNRI PHGR
 KNHSDKGPKPVVFLQHLLADSSNWVTNLANSSLGFILADAGFDVWGMNSRGNTWSRKHKTL SVSQDEFW
 AFSYDEMAKYDLPASINFILNKTGQEQVYVGHSGQTTIGFIAFSQIPELAKRIKMFFALGPVASVAFCT
 SPMAKLGRLPDHLIKDLFGDKEFLPQSAFLKWLGTHVCTHVILKELCGNLCFLLCGFNERNLNMSRVDVY
 TTHSPAGTSVQNMLHWSQAVKFQKFQAFDWGSSAKNYFHYNQSYPPTYNVKDMLVPTAVWSGGHDWLADY
 YDYNILLTQITNLV FHESIPEWEHLDFIWGLDAPWRLYNKIINLMRKYQ

TRTRPLEQKLISEEDLAANDILDYKDDDDKV

Chromatograms: https://cdn.origene.com/chromatograms/mk6523_e08.zip

Restriction Sites: SgfI-MluI

Cloning Scheme:



* The last codon before the Stop codon of the ORF

ACCN: NM_001127605

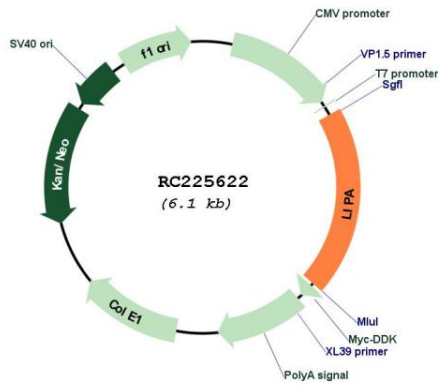
ORF Size: 1197 bp

OTI Disclaimer: Due to the inherent nature of this plasmid, standard methods to replicate additional amounts of DNA in E. coli are highly likely to result in mutations and/or rearrangements. Therefore, OriGene does not guarantee the capability to replicate this plasmid DNA. Additional amounts of DNA can be purchased from OriGene with batch-specific, full-sequence verification at a reduced cost. Please contact our customer care team at custsupport@origene.com or by calling 301.340.3188 option 3 for pricing and delivery.

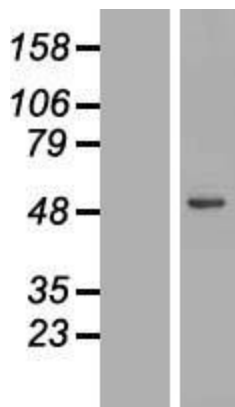
The molecular sequence of this clone aligns with the gene accession number as a point of reference only. However, individual transcript sequences of the same gene can differ through naturally occurring variations (e.g. polymorphisms), each with its own valid existence. This clone is substantially in agreement with the reference, but a complete review of all prevailing variants is recommended prior to use. [More info](#)

OTI Annotation:	This clone was engineered to express the complete ORF with an expression tag. Expression varies depending on the nature of the gene.
Components:	The ORF clone is ion-exchange column purified and shipped in a 2D barcoded Matrix tube containing 10ug of transfection-ready, dried plasmid DNA (reconstitute with 100 ul of water).
Reconstitution Method:	<ol style="list-style-type: none">1. Centrifuge at 5,000xg for 5min.2. Carefully open the tube and add 100ul of sterile water to dissolve the DNA.3. Close the tube and incubate for 10 minutes at room temperature.4. Briefly vortex the tube and then do a quick spin (less than 5000xg) to concentrate the liquid at the bottom.5. Store the suspended plasmid at -20°C. The DNA is stable for at least one year from date of shipping when stored at -20°C.
RefSeq:	NM_001127605.3
RefSeq ORF:	1200 bp
Locus ID:	3988
UniProt ID:	P38571
Cytogenetics:	10q23.31
Protein Families:	Druggable Genome
Protein Pathways:	Lysosome, Steroid biosynthesis
MW:	45.42 kDa
Gene Summary:	This gene encodes lipase A, the lysosomal acid lipase (also known as cholesterol ester hydrolase). This enzyme functions in the lysosome to catalyze the hydrolysis of cholesteryl esters and triglycerides. Mutations in this gene can result in Wolman disease and cholesteryl ester storage disease. Alternatively spliced transcript variants have been found for this gene. [provided by RefSeq, Jan 2014]

Product images:



Circular map for RC225622



Western blot validation of overexpression lysate (Cat# [LY426820]) using anti-DDK antibody (Cat# [TA50011-100]). Left: Cell lysates from untransfected HEK293T cells; Right: Cell lysates from HEK293T cells transfected with RC225622 using transfection reagent MegaTran 2.0 (Cat# [TT210002]).