

Product datasheet for **RC225610**

TACC1 (NM_001122824) Human Tagged ORF Clone

Product data:

| | |
|---------------------------|--|
| Product Type: | Expression Plasmids |
| Product Name: | TACC1 (NM_001122824) Human Tagged ORF Clone |
| Tag: | Myc-DDK |
| Symbol: | TACC1 |
| Synonyms: | Ga55 |
| Mammalian Cell Selection: | Neomycin |
| Vector: | pCMV6-Entry (PS100001) |
| E. coli Selection: | Kanamycin (25 ug/mL) |
| ORF Nucleotide Sequence: | >RC225610 representing NM_001122824 Red=Cloning site Blue=ORF Green=Tags(s) |

TTTTGTAATACGACTCACTATAGGGCGGCCGGAATTCGTCGACTGGATCCGGTACCGAGGAGATCTGCC
GCC**CGATCGC**

ATGGCGTTTACGCCGTGGCAGATCCTGTCCCCGTGCAGTGGGCGAAATGGACGTGGTCTGCGGTACGCG
GCGGGGCCCGCGGCGAGGACGAGGCTGGCGGGCCCGAGGGCGACCCGAGGAGGAGGATTCGCAAGCCGA
GACCAATCCTTGAGTTTCAGGAGTGGCTGTAAGGTGAAGAAGCATGAACTCAGTCTCTCGCCCTGGAT
GCATGTTCTCGGGATGAAGGGGAGTATCTCCAGATTTAGACATTTCTAATAGGGATGGCCATGCTA
CTGATGAGGAGAACTGGCATCCACGTCATGTGGTCAGAAATCAGCTGGTCCGAGGTGAAAGGTGAGCC
AGAGGAAGACCTGGAGTACTTTGAATGTTCCAATGTTCTGTGTCTACCATAAATCATGCGTTTTATCC
TCAGAAGCAGGCATAGAGAAGGAGACGTGCCAGAAGATGGAAGAAGACGGGTCCACTGTGCTTGGCTGC
TGGAGTCTCTGCAGAGAAGGCCCTGTGTGCGTGTCTGTGGAGGTGAGAGCCCCCTGGATGGGATCTG
CCTCAGCGAATCAGACAAGACAGCCGTGCTCACCTTAATAAGAGAAGAGATAATTACTAAAGAGATTGAA
GCAATGAATGGAAGAAGAAATACGAAGAGACCCGCAAGAGTTTGGAGATGAGGAAATTTAGCTG
AATATGAAAAGACTATTGCTCAAATGATTGAAGATGAACAAGGACAAGTATGACCTCTCAGAAGAGCTT
CCAGCAACTGACCATGGAGAAGGAACAGGCCCTGGCTGACCTTAATCTGTGGAAGGTCCCTTTCTGAT
CTCTTCAGGAGATATGAGAACCTGAAAGGTGTTCTGGAAGGGTTCAAGAAGAATGAAGAAGCCTTGAAGA
AATGTGCTCAGGATTACTTAGCCAGAGTTAAACAAGAGGAGCAGCGATACCAGGCCCTGAAAATCCACGC
AGAAGAGAACTGGACAAGCCATGAAGAGATTGCTCAGGTTTCAACAAGGCTGAGAGTGCA
GCTCTCCATGCTGGACTCCGCAAGAGCAGATGAAGGTGGAGTCCCTGGAAGGGCCCTGCAGCAGAAGA
ACCAAGAAATTGAAGAACTGACAAAAATCTGTGATGAGCTGATTGCAAGCTGGGAAAGACTGAC

ACGCGTACGCGGCCGCTCGAGCAGAACTCATCTCAGAAGAGGATCTGGCAGCAATGATATCCTGGATT
ACAAGGATGACGACGATAAGGTTTAA



[View online »](#)

Protein Sequence: >RC225610 representing NM_001122824
 Red=Cloning site Green=Tags(s)

MAFSPWQILSPVQWAKWTWSAVRGAAGEDEAGGPEGDPPEEDSQAETKSLSFRSGCKVKKHETQSLALD
 ACSRDEGAVISQISDISNRDGHATDEEKLASTSCGQKSAGAEVKGEPEEDLEYFECSTNPVSTINHAFSS
 SEAGIEKETCQKMEEDGSTVLGLLESSAEKAPVSVSCGGESPLDGICLSESDKTAVLTLIREEIIITKEIE
 ANEWKKYEEETRQEVLEMRKIVAEYEKTI AQMIEDEQRTSMTSQKSFQQLTMEKEQALADLNSVERSLSD
 LFRRYENLKGVLGFKKNEEALKKCAQDYLRVKQEEQRYQALKIHAEKLDKANEEIAQVRTKAKAESA
 ALHAGLRKEQMKVESLERALQQKNQIEELTKICDELI AKLGKTD

TRTRPLEQKLISEEDLAANDILDYKDDDDKV

Chromatograms: https://cdn.origene.com/chromatograms/ja1293_d06.zip

Restriction Sites: SgfI-MluI

Cloning Scheme:



ACCN: NM_001122824

ORF Size: 1185 bp

OTI Disclaimer: The molecular sequence of this clone aligns with the gene accession number as a point of reference only. However, individual transcript sequences of the same gene can differ through naturally occurring variations (e.g. polymorphisms), each with its own valid existence. This clone is substantially in agreement with the reference, but a complete review of all prevailing variants is recommended prior to use. [More info](#)

OTI Annotation: This clone was engineered to express the complete ORF with an expression tag. Expression varies depending on the nature of the gene.

Components: The ORF clone is ion-exchange column purified and shipped in a 2D barcoded Matrix tube containing 10ug of transfection-ready, dried plasmid DNA (reconstitute with 100 ul of water).

Reconstitution Method:

1. Centrifuge at 5,000xg for 5min.
2. Carefully open the tube and add 100ul of sterile water to dissolve the DNA.
3. Close the tube and incubate for 10 minutes at room temperature.
4. Briefly vortex the tube and then do a quick spin (less than 5000xg) to concentrate the liquid at the bottom.
5. Store the suspended plasmid at -20°C. The DNA is stable for at least one year from date of shipping when stored at -20°C.

RefSeq: [NM_001122824.2](#)

RefSeq ORF: 1188 bp

Locus ID: 6867

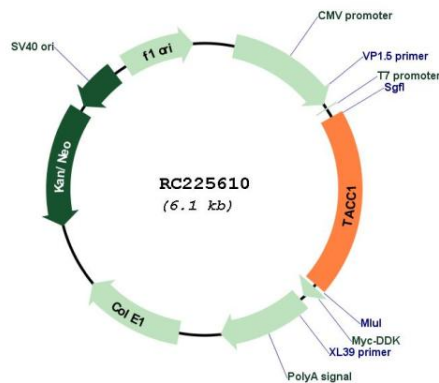
UniProt ID: [O75410](#)

Cytogenetics: 8p11.22

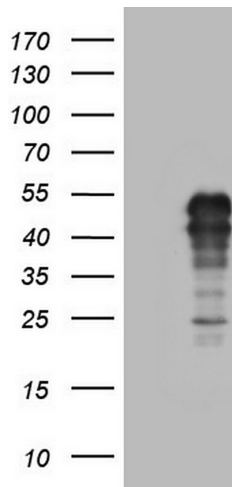
MW: 43.8 kDa

Gene Summary: This locus may represent a breast cancer candidate gene. It is located close to FGFR1 on a region of chromosome 8 that is amplified in some breast cancers. Several transcript variants encoding different isoforms have been found for this gene. [provided by RefSeq, Jun 2017]

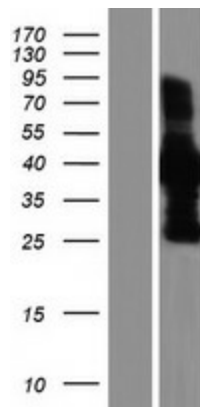
Product images:



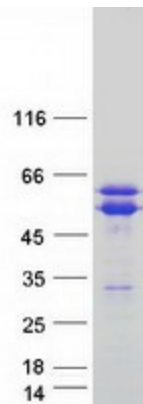
Circular map for RC225610



HEK293T cells were transfected with the pCMV6-ENTRY control (Cat# [PS100001], Left lane) or pCMV6-ENTRY TACC1 (Cat# RC225610, Right lane) cDNA for 48 hrs and lysed. Equivalent amounts of cell lysates (5 ug per lane) were separated by SDS-PAGE and immunoblotted with anti-TACC1 (Cat# [TA805373]). Positive lysates [LY426566] (100ug) and [LC426566] (20ug) can be purchased separately from OriGene.



Western blot validation of overexpression lysate (Cat# [LY426566]) using anti-DDK antibody (Cat# [TA50011-100]). Left: Cell lysates from untransfected HEK293T cells; Right: Cell lysates from HEK293T cells transfected with RC225610 using transfection reagent MegaTran 2.0 (Cat# [TT210002]).



Coomassie blue staining of purified TACC1 protein (Cat# [TP325610]). The protein was produced from HEK293T cells transfected with TACC1 cDNA clone (Cat# RC225610) using MegaTran 2.0 (Cat# [TT210002]).