

Product datasheet for **RC225608**

PIP5KL1 (NM_001135219) Human Tagged ORF Clone

Product data:

Product Type:	Expression Plasmids
Product Name:	PIP5KL1 (NM_001135219) Human Tagged ORF Clone
Tag:	Myc-DDK
Symbol:	PIP5KL1
Synonyms:	PIPKH
Mammalian Cell Selection:	Neomycin
Vector:	pCMV6-Entry (PS100001)
E. coli Selection:	Kanamycin (25 ug/mL)
ORF Nucleotide Sequence:	>RC225608 representing NM_001135219 Red=Cloning site Blue=ORF Green=Tags(s)

TTTTGTAATACGACTCACTATAGGGCGGCCGGAATTCGTCGACTGGATCCGGTACCGAGGAGATCTGCC
GCC**CGATCGCC**

ATGGCTGCGCCGAGCCCGGGGCCCGCGAGGTCCTGGCCCCCTCCCCTGAGGCTGGATGCAGAGCAGTCA
CCTCCAGCCGGCGGGGCTTCTTGCGCCTCCGAGACAAGCAGTCTCGCCTGGGCTGTTTGGATCAG
CCCGGGCATGAACTGCATGGGATGACGTGCATGATGCAGGCAGGGCTGTGGGCTGCCACCCAGGTCTCC
ATGGACCACCCACCGGGGCCCTCCCGGACGATTTCTCGGAGGTCCTAACCAGGTTACAGAGG
GCTTCGAGCTGGGCACGCTGGCCGGCCCGCTTTGCCTGGCTGCGCCGCTCCCTGGGCTGGCGGAGGA
GGACTATCAGGCTGCCCTGGGCCCGGGCGCCCTACCTGCAGTTCCTCAGCACCTCCAAGAGCAAGGCC
AGCTTCTTCTGTCCCACGACCAGCGCTTCTTCTGAAGACCCAGGGGCGCCGAGAGGTGCAGGCTCTGC
TCGCCCACCTGCCCGCTACGTGCAGCACCTGCAGCGCACCCGCACTCGCTGCTGGCGCGGTTGTGGG
AGTGCACAGTCTGCGGGTGGACCGGGAAAGAAGACGTAATTCATCGTATGCAGAGCGTCTTACCCC
GCCGGCCGATCTCCGAGAGGTATGACATCAAAGGCTGCGAGGTGAGCCGCTGGGTGGATCCCGCCCTG
AGGGCAGCCCCCTGTTCTGGTGTGAAGACCTCAACTTTCAGGGCAAGACCATCAACCTGGGGCCCCA
GCGGAGCTGGTTCCTCCGACAGTGAAGTCCACGAGGATGAGAGGGGCCCGGCAGCAGCCTCATCTCCGCA
AGCCTCCTGATAGCCTTCAACGCTCCACGAGGATGAGAGGGGCCCGGCAGCAGCCTCATCTCCGCA
CGGCCAGTCTGTGCAAGGGGCACAGAGCCCGAAGAGTCGAGAGCCCAAACCGCCGGCTGCTGCCCGA
CGCCCCAACGCCCTACACATCCTGGACGGGCCGAGCAGCGCTATTTCTGGGCGTCGTGGATCTCGCC
ACAGTCTACGGGCTCCGCAAGCGGCTGGAGCACCTGTGGAAGACTGCGCTACCCAGGCCGGACCTTCT
CCACTGTCAGCCCGGCTCGTACGCCCGTGCCTCTGCCAGTGGGTGGAGGCGCACAGGAG

ACGCGTACGCGGCCGCTCGAGCAGAACTCATCTCAGAAGAGGATCTGGCAGCAATGATATCTGGATT
ACAAGGATGACGACGATAAGGTTTAA



[View online >](#)

Protein Sequence: >RC225608 representing NM_001135219
 Red=Cloning site Green=Tags(s)

MAAPSPGPREVLAPSPEAGCRAVTSSRRGLLWLRDKQSRLGLFEISPGHELHGMCMMQAGLWAAQTQVS
 MDHPPTGPPSRDDFSEVLTQVHEGFELGTLAGPAFAWLRRSLGLAEEDYQAALGPGGPYLQFLSTSKSKA
 SFFLSHDQRFFLKTQGRREVQALLAHLPRYVQHLQRHPHSLARLLGVHSLRVDRGKKTFFIVMQSVFYF
 AGRISERYDIKGEVSRWVDPAPEGSPLVLVLDLNFQGTINLGPQRSWFLRQMELDTTFLRELNVLDY
 SLLIAFQRLHEDERGPSSLIIFRTARSVQGAQSPPEESRAQNRRLLPDAPNALHILDGPEQRYFLGVVDLA
 TVYGLRKRLEHLWKTLYPGRTFSTVSPARYARRLCQWVEAHTTE

TRTRPLEQKLISEEDLAANDILDYKDDDDKV

Chromatograms: https://cdn.origene.com/chromatograms/mk8056_h08.zip

Restriction Sites: SgfI-MluI

Cloning Scheme:



ACCN: NM_001135219

ORF Size: 1182 bp

OTI Disclaimer: The molecular sequence of this clone aligns with the gene accession number as a point of reference only. However, individual transcript sequences of the same gene can differ through naturally occurring variations (e.g. polymorphisms), each with its own valid existence. This clone is substantially in agreement with the reference, but a complete review of all prevailing variants is recommended prior to use. [More info](#)

OTI Annotation: This clone was engineered to express the complete ORF with an expression tag. Expression varies depending on the nature of the gene.

Components: The ORF clone is ion-exchange column purified and shipped in a 2D barcoded Matrix tube containing 10ug of transfection-ready, dried plasmid DNA (reconstitute with 100 ul of water).

Reconstitution Method:

1. Centrifuge at 5,000xg for 5min.
2. Carefully open the tube and add 100ul of sterile water to dissolve the DNA.
3. Close the tube and incubate for 10 minutes at room temperature.
4. Briefly vortex the tube and then do a quick spin (less than 5000xg) to concentrate the liquid at the bottom.
5. Store the suspended plasmid at -20°C. The DNA is stable for at least one year from date of shipping when stored at -20°C.

RefSeq: [NM_001135219.2](#)

RefSeq ORF: 1185 bp

Locus ID: 138429

UniProt ID: [Q5T9C9](#)

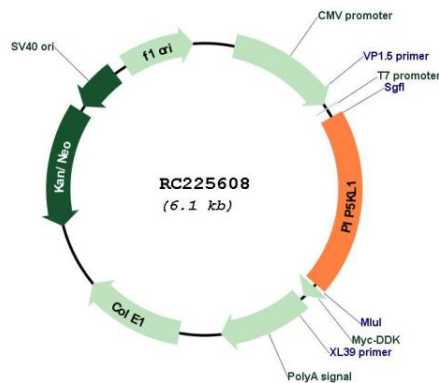
Cytogenetics: 9q34.11

Protein Families: Druggable Genome

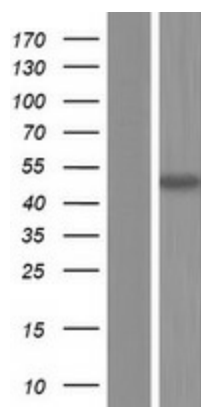
MW: 44.4 kDa

Gene Summary: PIP5KL1 is a phosphoinositide kinase-like protein that lacks intrinsic lipid kinase activity but associates with type I PIPKs (see PIP5K1A; MIM 603275) and may play a role in localization of PIPK activity (Chang et al., 2004 [PubMed 14701839]).[supplied by OMIM, Jun 2009]

Product images:



Circular map for RC225608



Western blot validation of overexpression lysate (Cat# [LY427600]) using anti-DDK antibody (Cat# [TA50011-100]). Left: Cell lysates from untransfected HEK293T cells; Right: Cell lysates from HEK293T cells transfected with RC225608 using transfection reagent MegaTran 2.0 (Cat# [TT210002]).