

Product datasheet for RC225603

NAPE PLD (NAPEPLD) (NM_001122838) Human Tagged ORF Clone

Product data:

Product Type:	Expression Plasmids
Product Name:	NAPE PLD (NAPEPLD) (NM_001122838) Human Tagged ORF Clone
Tag:	Myc-DDK
Symbol:	NAPE PLD
Synonyms:	C7orf18; FMP30; NAPE-PLD
Mammalian Cell Selection:	Neomycin
Vector:	pCMV6-Entry (PS100001)
E. coli Selection:	Kanamycin (25 ug/mL)
ORF Nucleotide Sequence:	>RC225603 representing NM_001122838 Red=Cloning site Blue=ORF Green=Tags(s)

TTTTGTAATACGACTCACTATAGGGCGGCCGGAATTCGTCGACTGGATCCGGTACCGAGGAGATCTGCC
GCC**CGATCGCC**

ATGGATGAAAAAGAAAGCAACCAGTCTCTGATGACAAGCAGCCAATATCCTAAAGAAGCAGTAAGAAAAC
GTCAAATTCAGCACGGAATTCGGAGCAAGTATTCTTCTAGGTTTTCTAGGAAAAGCTCAAAGTGA
TTATAGACTAGAAGAAGATGTAATAAATCCAAGAAAGGAAAAGATGGGAGATTTGTGAATCCGTGGCCA
ACATGGAAAAACCCCTCTATTCCAAATGTTCTCAGATGGCTGATAATGGAGAAAGATCACAGCAGTGTT
CAAGTTCTAAAGAGGAACTAGACAAAGAACTCCAGTGCTTAAGCCATATTTTATCACTAACCCCTGAAGA
AGCTGGAGTGAGGGAAGCTGGCTTAAGAGTCACATGGCTGGGACATGCCACGGTAATGGTGGAAATGGAT
GAGCTCATATTTCTCACGGATCCCATCTTTAGCTCTCGTGCTTACCATCGCAGTACATGGTCCAAAGC
GATTTCTCGTCCCGTGCACAATAAGTGAATCCCTCCAATAGATGCGGTCTTATCAGTCACAACCA
CTATGACCATCTGGACTACAATTCTGTCAATGCTTTGAATGAGCGATTTGGTAATGAGTTGAGATGGTTT
GTGCTTTGGTCTCCTTGACTGGATGCAAAAATGTGGCTGTGAGAAATGATGAGTTGGACTGGTGGG
AGGAGAATTGTGCCCCGGACATGATAAGGTCACCTTTGTCTTTACACCTCCCAGCACTGGTGTAAAAG
GACTCTAATGGATGACAACAAGGTGCTATGGGGCAGCTGGTCTGTCTTGGGGCCTTGAATCGATTTTTT
TTCGCAGGAGATACTGGTTATTGCCCTGCTTTTGAAGAGATAGGAAAAAGATTTGGACCTTTTGACCTTG
CAGCTATTTCCCATCGGAGCTTATGAACCGAGGTGTTTATGAAATACCAGCATGTAGACCCAGAAGAAGC
TGTAAGGATTCACACTGATGTCCAAACAAGAAATCTATGGCAATTCAGTGGGAACTTTTGCTTAGCA
AATGAGCATTACTTAGAGCCTCCAGTGAAGCTGAATGAAGCTCTAGAGAGATACGGACTTAACGCTGAAG
ATTTTTTTGTCTTGAAGCATGGAGAATCAAGATACCTAAATAATGATGATGAAAACCTT

ACGGTACGGCGCGCTCGAGCAGAACTCATCTCAGAAGAGGATCTGGCAGCAATGATATCCTGGATT
ACAAGGATGACGACGATAAGGTTTAA



[View online >](#)

Protein Sequence: >RC225603 representing NM_001122838
Red=Cloning site Green=Tags(s)

MDENESNQSLMTSSQYPKEAVRKRQNSARNSGASDSSRFSRKSFKLDYRLEEDVTKSKKGGKDRFVNPWP
 TWKNPSIPNVLRWLIMEKDHSSVPSSKEELDKELPVLKPYFITNPEEAGVREAGLRVTWLGHATVMVEMD
 ELIFLTDPIFSSRASPSQYMGPKRFRSPCTISELPPIDAVLISHNHYDHLDYNSVIALNERFGNELRWF
 VPLGLLDWMQKCGCENVIELDWEENCVPGHDKVTFVFTPSQHWCKRTLMDDNKVLWGSWSVLPWNRRFF
 FAGDTGYCPAFEEIGKRFGPFDLAAIPIGAYEPRWFMKYQHVDPEEAVRIHTDVQTKKSMATHWGTFALA
 NEHYLEPPVKLNEALERYGLNAEDFFVLKHGESRYLNDDENF

TRTRPLEQKLISEEDLAANDILDYKDDDDKV

Chromatograms: https://cdn.origene.com/chromatograms/mk6269_a04.zip

Restriction Sites: SgfI-MluI

Cloning Scheme:



* The last codon before the Stop codon of the ORF

ACCN: NM_001122838

ORF Size: 1179 bp

OTI Disclaimer: The molecular sequence of this clone aligns with the gene accession number as a point of reference only. However, individual transcript sequences of the same gene can differ through naturally occurring variations (e.g. polymorphisms), each with its own valid existence. This clone is substantially in agreement with the reference, but a complete review of all prevailing variants is recommended prior to use. [More info](#)

OTI Annotation: This clone was engineered to express the complete ORF with an expression tag. Expression varies depending on the nature of the gene.

Components: The ORF clone is ion-exchange column purified and shipped in a 2D barcoded Matrix tube containing 10ug of transfection-ready, dried plasmid DNA (reconstitute with 100 ul of water).

Reconstitution Method:

1. Centrifuge at 5,000xg for 5min.
2. Carefully open the tube and add 100ul of sterile water to dissolve the DNA.
3. Close the tube and incubate for 10 minutes at room temperature.
4. Briefly vortex the tube and then do a quick spin (less than 5000xg) to concentrate the liquid at the bottom.
5. Store the suspended plasmid at -20°C. The DNA is stable for at least one year from date of shipping when stored at -20°C.

RefSeq: [NM_001122838.2](#)

RefSeq ORF: 1182 bp

Locus ID: 222236

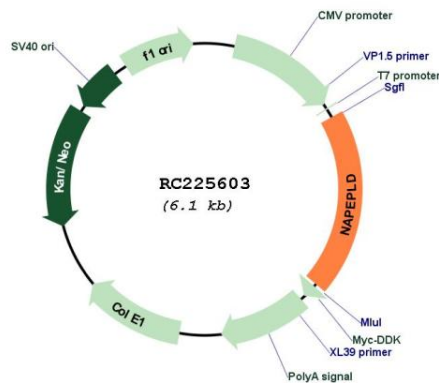
UniProt ID: [Q6IQ20](#)

Cytogenetics: 7q22.1

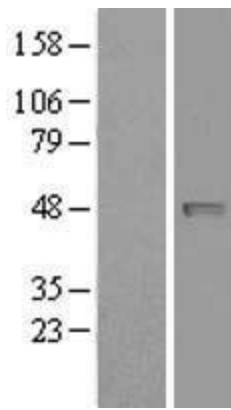
MW: 45.4 kDa

Gene Summary: NAPEPLD is a phospholipase D type enzyme that catalyzes the release of N-acylethanolamine (NAE) from N-acyl-phosphatidylethanolamine (NAPE) in the second step of the biosynthesis of N-acylethanolamine (Okamoto et al., 2004 [PubMed 14634025]).[supplied by OMIM, Oct 2008]

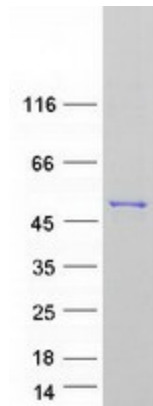
Product images:



Circular map for RC225603



Western blot validation of overexpression lysate (Cat# [LY426574]) using anti-DDK antibody (Cat# [TA50011-100]). Left: Cell lysates from untransfected HEK293T cells; Right: Cell lysates from HEK293T cells transfected with RC225603 using transfection reagent MegaTran 2.0 (Cat# [TT210002]).



Coomassie blue staining of purified NAPEPLD protein (Cat# [TP325603]). The protein was produced from HEK293T cells transfected with NAPEPLD cDNA clone (Cat# RC225603) using MegaTran 2.0 (Cat# [TT210002]).