

## Product datasheet for RC22592

### ART3 (NM\_001130016) Human Tagged ORF Clone

#### Product data:

Product Type:	Expression Plasmids
Product Name:	ART3 (NM_001130016) Human Tagged ORF Clone
Tag:	Myc-DDK
Symbol:	ART3
Synonyms:	ARTC3
Mammalian Cell Selection:	Neomycin
Vector:	pCMV6-Entry (PS100001)
E. coli Selection:	Kanamycin (25 ug/mL)
ORF Nucleotide Sequence:	>RC22592 representing NM_001130016 Red=Cloning site Blue=ORF Green=Tags(s)

TTTTGTAATACGACTCACTATAGGGCGGCCGGAATTCGTCGACTGGATCCGGTACCGAGGAGATCTGCC  
GCC**CGATCGCC**

ATGAAGACGGGACATTTTGAATAGTCACCATGCTGCTGGCAACCATGATTCTAGTGGACATTTCCAGG  
TGAAGGCTGAAGTGTAGACATGGCAGATAATGCATTTGATGATGAATACCTGAAATGTACGGACAGGAT  
GGAAATTAATACGTTCCCAACTGCTAAAGGAGGAAAAAGCAAGCCACCAGCAATTAGATACTGTGTGG  
GAAAATGCAAAAGCCAAATGGGCAGCCGAAAGACTCAAATCTTCTCCCTATGAATTTAAGGATAACC  
ATGGAATAGCCCTGATGGCATATATTTCCGAAGCTCAAGAGCAAACCTCCCTTTTACCATCTGTTCAGTGA  
AGCTGTGAAGATGGCTGGCCAATCTCGAGAAGATTATATCTATGGCTTCCAGTTCAAAGCTTTCCACTTT  
TACCTCACAAGAGCCCTGCAGTTGCTGAGAAAACCTTGTGAGGCCAGTTCAAAACCTGTGGTATATAGAA  
CAAGCCAGGGCACTTCATTTACATTTGGAGGGCTAAACCAAGCCAGGTTTGGCCATTTTACCTTGGCATA  
TTCAGCCAAACCTCAGGCTGCTAATGACCAGCTCACTGTGTTATCCATCTACACATGCCTTGGAGTTGAC  
ATTGAAAATTTTCTTGATAAAGAAAGTGAAGAATTACTTTAATACCTCTGAATGAGGTTTTTCAAGTGT  
CACAGGAGGGGGCTGGCAATAACCTTATCCTTCAAAGCATAAACAAGACCTGCAGCCATTATGAGTGTGC  
ATTTCTAGGTGGACTAAAAACCGAAAACCTGTATTGAGAACCTAGAATATTTCAACCCATCTATGTCTAC  
AACCTTGGTGAGAAAAACCGAAGCTTGAAGACCATAGTGAGAAAAACCTGGAAGCTTGAAGACCATGGTG  
AGAAAAACCGAAGCTTGAAGACCATGGTGTGAAAATCCTTGAACCCACCCAAATACCTGGAATGAAAAT  
TCCAGAACCTTTTCCACTACCTGAAGATAAAAAGTCAAGGAAATATCAACAATCCTACTCCAGGTCCAGTT  
CCTGTTCCAGGTCCAAAAGCCATCCTTCTGCATCCTTGGGCAAACCTGCTGCTTCCACAGTTTGGGATGG  
TCATCATTTTAATCAGTGTCTTCTGCTATAAATCTCTTTGTTGCTCTG

**ACGGT**ACGGCGCCGCTCGAGCAGAAAACCTCATCTCAGAAGAGGATCTGGCAGCAAATGATATCCTGGATT  
ACAAGGATGACGACGATAAGGTTTAA



[View online »](#)

**Protein Sequence:** >RC225592 representing NM\_001130016  
 Red=Cloning site Green=Tags(s)

MKTGHFEIVTMLLATMILVDIFQVKAEVLDMADNAFDDEYLKCTDRMEIKYVPQLLKEEKASHQQLDVTW  
 ENAKAKWAARKTQIFLPMNFKDNHGIALMAYISEAQEQTPFYHLFSEAVKMAGQSREYIYGFQKAFHF  
 YLTRALQLLRKPCEASSKTVVYRTSQGTSFTFGGLNQARFGHFTLAYSAPQAANDQLTVLSIYTCLGVD  
 IENFLDKESERITLIPLNEVFQVSQEGAGNNLILQSINKTCSHYECAFLGGLKTENCINLEYFQPIYVY  
 NPGENQKLEDHSEKNWKLLEDHGEKNQKLEDHGKILEPTQIPGMKIPEFPPLPEDKSQGNINNP TPGPV  
 PVPGPKSHPSASLGLLLPQFGMVIILISVSAINLFVAL

TRTRPLEQKLISEEDLAANDILDYKDDDDKV

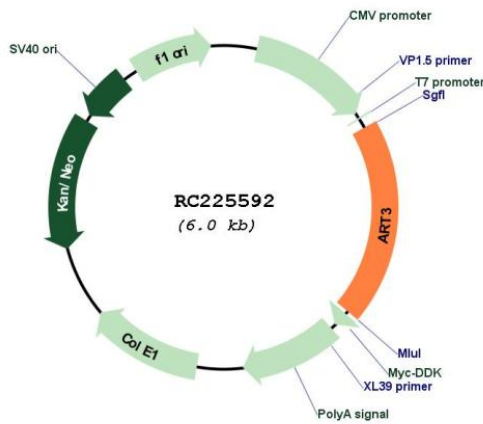
**Chromatograms:** [https://cdn.origene.com/chromatograms/mg3903\\_d01.zip](https://cdn.origene.com/chromatograms/mg3903_d01.zip)

**Restriction Sites:** SgfI-MluI

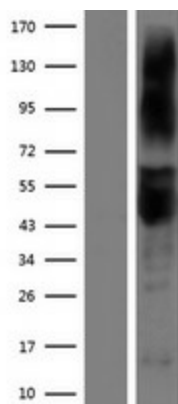
**Cloning Scheme:**



**Plasmid Map:**



<b>ACCN:</b>	NM_001130016
<b>ORF Size:</b>	1167 bp
<b>OTI Disclaimer:</b>	The molecular sequence of this clone aligns with the gene accession number as a point of reference only. However, individual transcript sequences of the same gene can differ through naturally occurring variations (e.g. polymorphisms), each with its own valid existence. This clone is substantially in agreement with the reference, but a complete review of all prevailing variants is recommended prior to use. <a href="#">More info</a>
<b>OTI Annotation:</b>	This clone was engineered to express the complete ORF with an expression tag. Expression varies depending on the nature of the gene.
<b>Components:</b>	The ORF clone is ion-exchange column purified and shipped in a 2D barcoded Matrix tube containing 10ug of transfection-ready, dried plasmid DNA (reconstitute with 100 ul of water).
<b>Reconstitution Method:</b>	<ol style="list-style-type: none"><li>1. Centrifuge at 5,000xg for 5min.</li><li>2. Carefully open the tube and add 100ul of sterile water to dissolve the DNA.</li><li>3. Close the tube and incubate for 10 minutes at room temperature.</li><li>4. Briefly vortex the tube and then do a quick spin (less than 5000xg) to concentrate the liquid at the bottom.</li><li>5. Store the suspended plasmid at -20°C. The DNA is stable for at least one year from date of shipping when stored at -20°C.</li></ol>
<b>RefSeq:</b>	<a href="#">NM_001130016.3</a>
<b>RefSeq ORF:</b>	1170 bp
<b>Locus ID:</b>	419
<b>UniProt ID:</b>	<a href="#">Q13508</a>
<b>Cytogenetics:</b>	4p15.1-p14
<b>Protein Families:</b>	Transmembrane
<b>MW:</b>	43.7 kDa
<b>Gene Summary:</b>	This gene encodes an arginine-specific ADP-ribosyltransferase. The encoded protein catalyzes a reversible reaction which modifies proteins by the addition or removal of ADP-ribose to an arginine residue to regulate the function of the modified protein. An ADP-ribosyltransferase pseudogene is located on chromosome 11. Multiple transcript variants encoding different isoforms have been found for this gene. [provided by RefSeq, Dec 2011]

**Product images:**

Western blot validation of overexpression lysate (Cat# [LY427105]) using anti-DDK antibody (Cat# [TA50011-100]). Left: Cell lysates from untransfected HEK293T cells; Right: Cell lysates from HEK293T cells transfected with RC225592 using transfection reagent MegaTran 2.0 (Cat# [TT210002]).