

Product datasheet for RC225572

CCR2 (NM_001123041) Human Tagged ORF Clone

Product data:

Product Type:	Expression Plasmids
Product Name:	CCR2 (NM_001123041) Human Tagged ORF Clone
Tag:	Myc-DDK
Symbol:	CCR2
Synonyms:	CC-CKR-2; CCR-2; CCR2A; CCR2B; CD192; CKR2; CKR2A; CKR2B; CMKBR2; MCP-1-R
Mammalian Cell Selection:	Neomycin
Vector:	pCMV6-Entry (PS100001)
E. coli Selection:	Kanamycin (25 ug/mL)
ORF Nucleotide Sequence:	>RC225572 representing NM_001123041 Red=Cloning site Blue=ORF Green=Tags(s)

TTTTGTAATACGACTCACTATAGGGCGGCCGGAATTCGTCGACTGGATCCGGTACCGAGGAGATCTGCC
GCC**CGATCGCC**

ATGCTGTCCACATCTCGTTCTCGGTTTATCAGAAATACCAACGAGAGCGGTGAAGAAGTCACCACCTTTT
TTGATTATGATTACGGTGTCCCTGTCTATAAATTTGACGTGAAGCAAATGGGGCCCACTCCTGCCTCC
GCTCTACTCGTGGTGTTCATCTTTGGTTTTGTGGCAACATGCTGGTCGTCCTCATCTTAATAAAGTCG
AAAAAGCTGAAGTCTTGACTGACATTTACCTGCTCAACCTGGCCATCTCTGATCTGCTTTTTCTTATTA
CTCTCCCATTGTGGGCTCACTCTGCTGCAAATGAGTGGGTCTTTGGGAATGCAATGTGCAAATTATTCAC
AGGGCTGTATCACATCGGTTATTTTGGCGAATCTTCTTCATCATCCTCCTGACAATCGATAGATACCTG
GCTATTGTCCATGCTGTGTTTGCTTTAAAAGCCAGGACGGTACCTTTGGGGTGGTGACAAGTGTGATCA
CCTGGTTGGTGGCTGTGTTGCTTCTGTCCCAGGAATCATCTTTACTAAATGCCAGAAAGAAGATTCTGT
TTATGTCTGTGGCCCTTATTTTCCACGAGGATGGAATAATTTCCACACAATAATGAGGAACATTTTGGGG
CTGGTCTGCCGCTGCTCATCATGGTCACTGCTACTCGGAATCCTGAAAACCTGCTTCGGTGTGCGAA
ACGAGAAGAAGAGGCATAGGGCAGTGAGAGTCACTTACCATCATGATTGTTTACTTTCTCTTCTGGAC
TCCCTATAATATTGTCATTCTCCTGAACACCTTCCAGGAATCTTCGGCCTGAGTAACTGTGAAAGCACC
AGTCAACTGGACCAAGCCAGCGAGGTGACAGAGACTCTTGGGATGACTCACTGTCATCAATCCCACATCA
TCTATGCCTTCGTTGGGAGAAGTTCAGAAGCCTTTTTACATAGCTCTTGGCTGTAGGATTGCCCCACT
CCAAAAACCAGTGTGTGGAGGTCCAGGAGTGAGACCAGGAAAGAATGTGAAAGTACTACACAAGGACTC
CTCGATGGTCTGGAAAAGGAAAGTCAATTGGCAGAGCCCTGAAAGCAGTCTTCAGGACAAAGAAGGAG
CC

ACGCGTACGCGGCCGCTCGAGCAGAAACTCATCTCAGAAGAGGATCTGGCAGCAAATGATATCCTGGATT
ACAAGGATGACGACGATAAGGTTTAA



[View online »](#)

Protein Sequence: >RC225572 representing NM_001123041
Red=Cloning site Green=Tags(s)

MLSTSRSRFIRNTNESGEEVTTFFDYDYGAPCHKFDVKQIGAQLLPPLYSLVFIFGFVGNMLVVLILINC
 KKLKCLTDIYLLNLAISDLLFLITLPLWAHSAANEVWVFGNAMCKLFTGLYHIGYFGGIFFIILLTIDRYL
 AIVHAVFALKARTVTFGVVTSVITWLVAVFASVPGIIFTKQKEDSVYVCGPYFPRGWNNFHTIMRNILG
 LVLPLLIMVICYSGILKTLRLCRNEKKRHRVRFVIFIMIVYFLFWTPYINIVILLNTFQEFFFGLSNCEST
 SQLDQATQVTEITLGMTHCCINPIIYAFVGEKFRSLFHIALGCRIAPLQKPVCGGPGVVRPGKNVKVTTQGL
 LDGRGKGSIGRAPEASLQDKEGA

TRTRPLEQKLISEEDLAANDILDYKDDDDKV

Chromatograms: https://cdn.origene.com/chromatograms/mg3818_b09.zip

Restriction Sites: SgfI-MluI

Cloning Scheme:



ACCN: NM_001123041

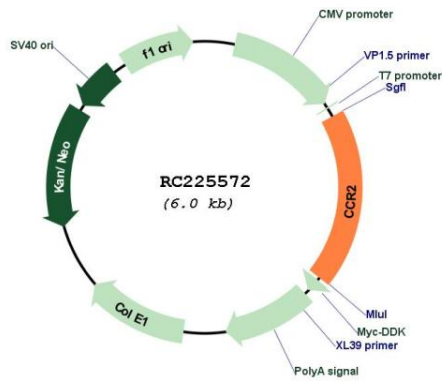
ORF Size: 1122 bp

OTI Disclaimer: Due to the inherent nature of this plasmid, standard methods to replicate additional amounts of DNA in E. coli are highly likely to result in mutations and/or rearrangements. Therefore, OriGene does not guarantee the capability to replicate this plasmid DNA. Additional amounts of DNA can be purchased from OriGene with batch-specific, full-sequence verification at a reduced cost. Please contact our customer care team at custsupport@origene.com or by calling 301.340.3188 option 3 for pricing and delivery.

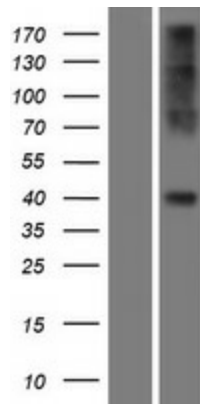
The molecular sequence of this clone aligns with the gene accession number as a point of reference only. However, individual transcript sequences of the same gene can differ through naturally occurring variations (e.g. polymorphisms), each with its own valid existence. This clone is substantially in agreement with the reference, but a complete review of all prevailing variants is recommended prior to use. [More info](#)

OTI Annotation:	This clone was engineered to express the complete ORF with an expression tag. Expression varies depending on the nature of the gene.
Components:	The ORF clone is ion-exchange column purified and shipped in a 2D barcoded Matrix tube containing 10ug of transfection-ready, dried plasmid DNA (reconstitute with 100 ul of water).
Reconstitution Method:	<ol style="list-style-type: none">1. Centrifuge at 5,000xg for 5min.2. Carefully open the tube and add 100ul of sterile water to dissolve the DNA.3. Close the tube and incubate for 10 minutes at room temperature.4. Briefly vortex the tube and then do a quick spin (less than 5000xg) to concentrate the liquid at the bottom.5. Store the suspended plasmid at -20°C. The DNA is stable for at least one year from date of shipping when stored at -20°C.
RefSeq:	<u>NM_001123041.2</u> , <u>NP_001116513.2</u>
RefSeq ORF:	1125 bp
Locus ID:	729230
UniProt ID:	<u>P41597</u>
Cytogenetics:	3p21.31
Protein Families:	Druggable Genome, Transmembrane
Protein Pathways:	Chemokine signaling pathway, Cytokine-cytokine receptor interaction
MW:	41.7 kDa
Gene Summary:	The protein encoded by this gene is a receptor for monocyte chemoattractant protein-1, a chemokine which specifically mediates monocyte chemotaxis. Monocyte chemoattractant protein-1 is involved in monocyte infiltration in inflammatory diseases such as rheumatoid arthritis as well as in the inflammatory response against tumors. The encoded protein mediates agonist-dependent calcium mobilization and inhibition of adenylyl cyclase. This protein can also be a coreceptor with CD4 for HIV-1 infection. This gene is located in the chemokine receptor gene cluster region of chromosome 3. [provided by RefSeq, Aug 2017]

Product images:



Circular map for RC225572



Western blot validation of overexpression lysate (Cat# [LY426596]) using anti-DDK antibody (Cat# [TA50011-100]). Left: Cell lysates from untransfected HEK293T cells; Right: Cell lysates from HEK293T cells transfected with RC225572 using transfection reagent MegaTran 2.0 (Cat# [TT210002]).