

## Product datasheet for **RC225566**

### SLC39A13 (NM\_001128225) Human Tagged ORF Clone

#### Product data:

Product Type:	Expression Plasmids
Product Name:	SLC39A13 (NM_001128225) Human Tagged ORF Clone
Tag:	Myc-DDK
Symbol:	SLC39A13
Synonyms:	EDSSPD3; LZT-Hs9; SCDEDS; ZIP13
Mammalian Cell Selection:	Neomycin
Vector:	pCMV6-Entry (PS100001)
E. coli Selection:	Kanamycin (25 ug/mL)
ORF Nucleotide Sequence:	>RC225566 representing NM_001128225 Red=Cloning site Blue=ORF Green=Tags(s)

TTTTGTAATACGACTCACTATAGGGCGGCCGGAATTCGTCGACTGGATCCGGTACCGAGGAGATCTGCC  
GCC**CGATCGCC**

ATGCCTGGATGTCCCTGCCCTGGCTGTGGCATGGCGGGCCCAAGGCTCCTCTTCTCACTGCCCTTGCCC  
TGGAGCTCTTGGGAAGGGCTGGGGTTCCAGCCGGCCCTCCGGAGCCGGGGGACTGCGACGGCCTGTGC  
CCTGGACAACAAGGAAAGCGAGTCTGGGGGCTCTGCTGAGCGGAGAGCGGCTGGACACCTGGATCTGC  
TCCCTCCTGGGTCCCTCATGGTGGGGCTCAGTGGGGTCTCCCGTTGCTTGTCATTCCCTAGAGATGG  
GGACCATGCTGCGCTCAGAAGCTGGGGCTGGCGCCTGAAGCAGCTGCTCAGCTTCGCCCTGGGGGACT  
CTTGGGAATGTGTTTCTGCATCTGCTGCCGAAGCCTGGGCCTACACGTGCAGCGCCAGCCTGGTGGT  
GAGGGGACAGACCTGCAGCAGCAACAGCTGGGGCTGTGGGTATTGCTGGCATCCTGACCTTCTCGG  
CGTTGGAGAAGATGTTTCTGGACAGCAAGGAGGAGGGGACCAGCCAGGCCCAACAAAGACCCCACTGC  
TGCTGCCGCCGCTCAATGGAGGCCACTGTCTGGCCAGCCGGCTGCAGAGCCCGGCTCGGTGCCGTG  
GTCCGGAGCATCAAAGTCAGCGGCTACCTCAACCTGCTGGCCAACACCATCGATAACTTCACCCACGGGC  
TGGCTGTGGCTGCCAGCTTCTTGTGAGCAAGAAGATCGGGCTCCTGACAACCATGGCCATCCTCCTGCA  
TGAGATCCCCATGAGGTGGGCGACTTTGCCATCTGCTCCGGCCGGCTTTGACCGATGGAGCGCAGCC  
AAGCTGCAACTCTCAACAGCGCTGGGGGCTACTGGCGCTGGCTTCGCCATCTGTACCCAGTCCCCCA  
AGGGAGTAGTTGGGTGTTCTCCCGCTGCAGAGGAGACGGCAGCCTGGGTCTGCCCTTCACTCTGGCGG  
CTTCTCTACATCGCCTTGGTGAACGTGCTCCCTGACCTCTTGAAGAAGAGACCCGTGGCGCTCCCTG  
CAGCAGCTGCTTCTGCTGTGCGGGCATCGTGGTAATGGTGCTTCTCGCTCTTCGTGGAT

**ACGCGT**ACGCGGCCGCTCGAGCAGAACTCATCTCAGAAGAGGATCTGGCAGCAATGATATCCTGGATT  
ACAAGGATGACGACGATAAGGTTTAA



[View online »](#)

**Protein Sequence:** >RC225566 representing NM\_001128225  
Red=Cloning site Green=Tags(s)

MPGCPGCGMAGPRLFLTALALELLGRAGGSQPALRSRGATACRLDNKESESWGALLSGERLDTWIC  
 SLLGSLMVGLSGVFPLLVIPLMGTMLRSEAGAWRLKQLLSFALGGLLGNVFLHLLPEAWAYTCSASPGG  
 EGQSLQQQQLGLWVIAGILTFLEALEKMF LDSKEEGTSQAPNKDPTAAAAALNGGHCLAQPAEPGLGAV  
 VRSIKVSGYLNLLANTIDNFTHGLAVAASFLVSKKIGLLTTMAILLHEIPHEVGDFAILLRAGFDRWSAA  
 KLQLSTALGGLL GAGFAICTQSPKGVVGCSPAAEETAAWVLPFTSGGFLYIALVNVLPDLLLEEDPWRS  
 LQQLLLLCAGIVVMVLFSLFVD

TRTRPLEQKLISEEDLAANDILDYKDDDDKV

**Chromatograms:** [https://cdn.origene.com/chromatograms/mk8055\\_c11.zip](https://cdn.origene.com/chromatograms/mk8055_c11.zip)

**Restriction Sites:** SgfI-MluI

**Cloning Scheme:**



**ACCN:** NM\_001128225

**ORF Size:** 1113 bp

**OTI Disclaimer:** Due to the inherent nature of this plasmid, standard methods to replicate additional amounts of DNA in E. coli are highly likely to result in mutations and/or rearrangements. Therefore, OriGene does not guarantee the capability to replicate this plasmid DNA. Additional amounts of DNA can be purchased from OriGene with batch-specific, full-sequence verification at a reduced cost. Please contact our customer care team at [custsupport@origene.com](mailto:custsupport@origene.com) or by calling 301.340.3188 option 3 for pricing and delivery.

The molecular sequence of this clone aligns with the gene accession number as a point of reference only. However, individual transcript sequences of the same gene can differ through naturally occurring variations (e.g. polymorphisms), each with its own valid existence. This clone is substantially in agreement with the reference, but a complete review of all prevailing variants is recommended prior to use. [More info](#)

**OTI Annotation:** This clone was engineered to express the complete ORF with an expression tag. Expression varies depending on the nature of the gene.

**Components:** The ORF clone is ion-exchange column purified and shipped in a 2D barcoded Matrix tube containing 10ug of transfection-ready, dried plasmid DNA (reconstitute with 100 ul of water).

**Reconstitution Method:**

1. Centrifuge at 5,000xg for 5min.
2. Carefully open the tube and add 100ul of sterile water to dissolve the DNA.
3. Close the tube and incubate for 10 minutes at room temperature.
4. Briefly vortex the tube and then do a quick spin (less than 5000xg) to concentrate the liquid at the bottom.
5. Store the suspended plasmid at -20°C. The DNA is stable for at least one year from date of shipping when stored at -20°C.

**RefSeq:** [NM\\_001128225.2](#), [NP\\_001121697.1](#)

**RefSeq ORF:** 1116 bp

**Locus ID:** 91252

**UniProt ID:** [Q96H72](#)

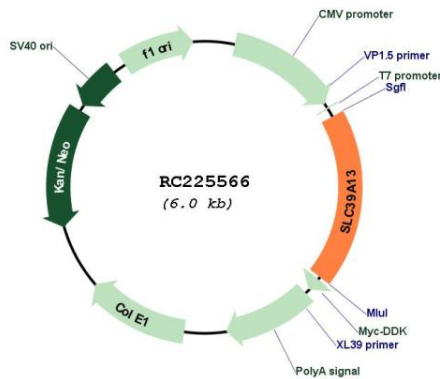
**Cytogenetics:** 11p11.2

**Protein Families:** Transmembrane

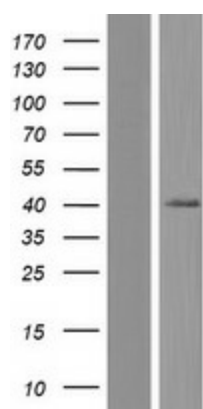
**MW:** 38.8 kDa

**Gene Summary:** This gene encodes a member of the LIV-1 subfamily of the ZIP transporter family. The encoded transmembrane protein functions as a zinc transporter. Mutations in this gene have been associated with the spondylocheiro dysplastic form of Ehlers-Danlos syndrome. Alternate transcript variants have been found for this gene. [provided by RefSeq, Jan 2016]

**Product images:**



Circular map for RC225566



Western blot validation of overexpression lysate (Cat# [LY426936]) using anti-DDK antibody (Cat# [TA50011-100]). Left: Cell lysates from untransfected HEK293T cells; Right: Cell lysates from HEK293T cells transfected with RC225566 using transfection reagent MegaTran 2.0 (Cat# [TT210002]).