

## Product datasheet for RC225548

### SUGT1 (NM\_001130912) Human Tagged ORF Clone

#### Product data:

Product Type:	Expression Plasmids
Product Name:	SUGT1 (NM_001130912) Human Tagged ORF Clone
Tag:	Myc-DDK
Symbol:	SUGT1
Synonyms:	SGT1
Mammalian Cell Selection:	Neomycin
Vector:	pCMV6-Entry (PS100001)
E. coli Selection:	Kanamycin (25 ug/mL)
ORF Nucleotide Sequence:	>RC225548 representing NM_001130912 Red=Cloning site Blue=ORF Green=Tags(s)

TTTTGTAATACGACTCACTATAGGGCGGCCGGAATTCGTCGACTGGATCCGGTACCGAGGAGATCTGCC  
GCC**CGCATCGCC**

ATGGCGGCGGCTGCAGCAGGAAGTCAACATCCCAGAGGTTTTCCAGAGCTTCTCGGATGCCCTAATCG  
ACGAGGACCCCCAGGCGCGTTAGAGGAGCTGACTAAGGCTTTGGAACAGAAACCAGATGATGCACAGTA  
TTATTGTCAAAGAGCTTATTGTACATTCTTCTGGGAATTACTGTGTTGCTGTTGCTGATGCAAAGAAG  
TCTCTAGAACTCAATCCAATAATCCACTGCTATGCTGAGAAAAGGAATATGTGAATACCATGAAAAA  
ACTATGCTGCTGCCCTAGAACTTTACAGAAGGACAAAAATTAGATATAGAGACGGGTTTCATCGTGT  
TGGCCAGGCTGGTCTCCAACCTTGACCTCAAGTGATCCACCTGCCTGGACTCCCAAAGTGCTGGGATT  
ACAGGTGCAGATGCTAATTTCAAGTGTCTGGATTAAGGTTGCAAGAAGCTCAGAATGGCTCAGAATCTG  
AGGTGTGGACTCATCAGTCAAAAATCAAGTATGACTGGTATCAAACAGAAATCTCAAGTAGTCATTACACT  
TATGATCAAGAATGTTCAAGAAGATGATGTAATGTGGAATTTTCAGAAAAAGAGTTGTCTGCTTTGGTT  
AACTTCCTTCTGGAGAGGATTACAATTTGAACTGGAATCTTCATCTATAATACCAGAACAGAGCA  
CGTTTAAAGTACTTTCAACAAAGATTGAAATTAAGTAAAGGCAAGGAGGCTGTGAGATGGGAAAAGCT  
AGGGGGCAAGGAGATGTGCCTACGCCAAAACAATTCGTAGCAGATGTAAGAACCTATATCCATCATCA  
TCTCCTTATACAAGAAATGGGATAAATGGTTGGTGGATCAAAGAAGAAGAAAAGAATGAAAAGTTGG  
AGGGAGATGCAGCTTTAAACAGATTATTTCAAGCAGATCTATTGAGATGGTTCTGATGAAGTAAAGCTGC  
CATGAACAAATCCTTTATGGAGTCGGTGGTACAGTTTTGAGTACCAACTGGTCTGATGTAGGTAAGG  
AAAGTTGAAATCAATCCTCCTGATGATATGGAATGAAAAAGTAC

**ACGCGT**ACGCGGCCGCTCGAGCAGAAACTCATCTCAGAAGAGGATCTGGCAGCAATGATATCCTGGATT  
ACAAGGATGACGACGATAAGGTTAA



[View online »](#)

**Protein Sequence:** >RC225548 representing NM\_001130912  
 Red=Cloning site Green=Tags(s)

MAAAAAGTATSQRFFQSFSDALIDEDPQAAL EELTKALEQKPDDAQYYCQRAYCHILLGNVCVAVADAKK  
 SLELNPNNSTAMLRKGI CEYHEKNYAAALETFT EGQKLDIETGFHRVQGAGLQLLTSSDPPALDSQSAGI  
 TGADANFSVWIKRCQEAQNGSESEVWTHQSKIKYD WYQTESQVVI TLMIKNVQKNDVNV EFSKELLSALV  
 KLPSPGEDYNLKLELLHPIIPEQSTFKVLSTKIEIKLKKPEAVRWEKLEGQGDVPTPKQFVADVKNLYPSS  
 SPYTRNWDKLVGEIKEEEKNEKLEGDAALNRLFQQIYSDGSDEVKRAMNKSFMESGGTVLSTNWSDVGKR  
 KVEINPPDDMEWKY

TRTRPLEQKLISEEDLAANDILDYKDDDDKV

**Chromatograms:** [https://cdn.origene.com/chromatograms/mk8055\\_a06.zip](https://cdn.origene.com/chromatograms/mk8055_a06.zip)

**Restriction Sites:** SgfI-MluI

**Cloning Scheme:**



\* The last codon before the Stop codon of the ORF

**ACCN:** NM\_001130912

**ORF Size:** 1095 bp

**OTI Disclaimer:** The molecular sequence of this clone aligns with the gene accession number as a point of reference only. However, individual transcript sequences of the same gene can differ through naturally occurring variations (e.g. polymorphisms), each with its own valid existence. This clone is substantially in agreement with the reference, but a complete review of all prevailing variants is recommended prior to use. [More info](#)

**OTI Annotation:** This clone was engineered to express the complete ORF with an expression tag. Expression varies depending on the nature of the gene.

**Components:** The ORF clone is ion-exchange column purified and shipped in a 2D barcoded Matrix tube containing 10ug of transfection-ready, dried plasmid DNA (reconstitute with 100 ul of water).

**Reconstitution Method:**

1. Centrifuge at 5,000xg for 5min.
2. Carefully open the tube and add 100ul of sterile water to dissolve the DNA.
3. Close the tube and incubate for 10 minutes at room temperature.
4. Briefly vortex the tube and then do a quick spin (less than 5000xg) to concentrate the liquid at the bottom.
5. Store the suspended plasmid at -20°C. The DNA is stable for at least one year from date of shipping when stored at -20°C.

**RefSeq:** [NM\\_001130912.3](#)

**RefSeq ORF:** 1098 bp

**Locus ID:** 10910

**UniProt ID:** [Q9Y2Z0](#)

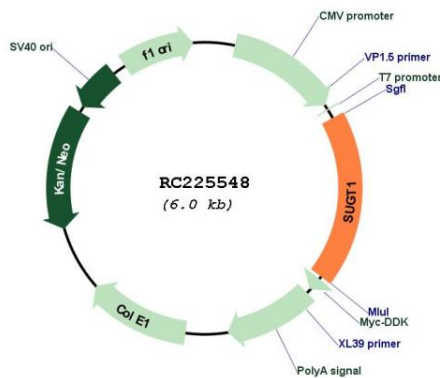
**Cytogenetics:** 13q14.3

**Protein Pathways:** NOD-like receptor signaling pathway

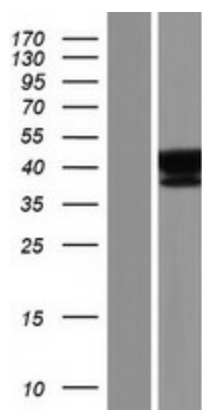
**MW:** 40.8 kDa

**Gene Summary:** This gene encodes a highly conserved nuclear protein involved in kinetochore function and required for the G1/S and G2/M transitions. This protein interacts with heat shock protein 90. Alternative splicing results in multiple transcript variants. Pseudogenes for this gene have been defined on several different chromosomes. [provided by RefSeq, Mar 2016]

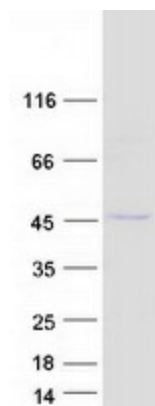
### Product images:



Circular map for RC225548



Western blot validation of overexpression lysate (Cat# [LY427302]) using anti-DDK antibody (Cat# [TA50011-100]). Left: Cell lysates from untransfected HEK293T cells; Right: Cell lysates from HEK293T cells transfected with RC225548 using transfection reagent MegaTran 2.0 (Cat# [TT210002]).



Coomassie blue staining of purified SUGT1 protein (Cat# [TP325548]). The protein was produced from HEK293T cells transfected with SUGT1 cDNA clone (Cat# RC225548) using MegaTran 2.0 (Cat# [TT210002]).