

## Product datasheet for **RC225538**

### CCR2 (NM\_001123396) Human Tagged ORF Clone

#### Product data:

Product Type:	Expression Plasmids
Product Name:	CCR2 (NM_001123396) Human Tagged ORF Clone
Tag:	Myc-DDK
Symbol:	CCR2
Synonyms:	CC-CKR-2; CCR-2; CCR2A; CCR2B; CD192; CKR2; CKR2A; CKR2B; CMKBR2; MCP-1-R
Mammalian Cell Selection:	Neomycin
Vector:	pCMV6-Entry (PS100001)
E. coli Selection:	Kanamycin (25 ug/mL)
ORF Nucleotide Sequence:	>RC225538 representing NM_001123396 Red=Cloning site Blue=ORF Green=Tags(s)

TTTTGTAATACGACTCACTATAGGGCGCCGGGAATTCGTCGACTGGATCCGGTACCGAGGAGATCTGCC  
GCC**CGGATCGCC**

ATGCTGTCCACATCTCGTTCTCGGTTTATCAGAAATACCAACGAGAGCGGTGAAGAAGTCACCACCTTTT  
TTGATTATGATTACGGTGCTCCCTGTCTATAAATTTGACGTGAAGCAAATGGGGCCCACTCCTGCCTCC  
GCTCTACTCGCTGGTGTTCATCTTTGGTTTTGTGGCAACATGCTGGTCGTCCTCATCTTAATAAAGTGC  
AAAAAGCTGAAGTCTTGACTGACATTTACCTGCTCAACCTGGCCATCTCTGATCTGCTTTTTCTTATTA  
CTCTCCCATTGTGGGCTCACTCTGCTGCAAATGAGTGGGTCTTTGGGAATGCAATGTGCAAATTATTCAC  
AGGGCTGTATCAGATCGGTTATTTTGGCGGAATCTTCTTCATCATCCTCCTGACAATCGATAGATACCTG  
GCTATTGTCCATGCTGTGTTTGCTTTAAAAGCCAGGACGGTACCTTTGGGGTGGTGACAAGTGTGATCA  
CCTGGTTGGTGGCTGTGTTTGCTTCTGTCCCAGGAATCATCTTTACTAAATGCCAGAAAGAAGATTCTGT  
TTATGTCTGTGGCCCTTATTTTCCACGAGGATGGAATAATTTCCACACAATAATGAGGAACATTTTGGGG  
CTGGTCTGCCGCTGCTCATCATGGTCACTGCTACTCGGAATCCTGAAAACCTGCTTCGGTGTGCAA  
ACGAGAAGAAGAGGCATAGGGCAGTGAGAGTCACTTACCACATCATGATTGTTTACTTTCTCTTCTGGAC  
TCCCTATAATATTGTCATTCTCCTGAACACCTTCCAGGAATCTTCGGCCTGAGTAACTGTGAAAGCACC  
AGTCAACTGGACCAAGCCAGCGAGTGACAGAGACTCTTGGGATGACTCACTGTCATCAATCCCATCA  
TCTATGCCTTCGTTGGGAGAAGTTCAGAAGGTATCTCTCGGTGTTCTTCGAAAGCACATCACCAGCG  
CTTCTGAAACAATGTCCAGTTTTCTACAGGGAGACAGTGGATGGAGTCAACAAACACGCCTTCC  
ACTGGGGAGCAGGAAGTCTCGGCTGGTTA

**ACGCGT**ACGCGGCCGCTCGAGCAGAAACTCATCTCAGAAGAGGATCTGGCAGCAAATGATATCCTGGATT  
ACAAGGATGACGACGATAAGGTTAA



[View online »](#)

**Protein Sequence:** >RC225538 representing NM\_001123396  
Red=Cloning site Green=Tags(s)

MLSTSRSRFIRNTNESGEEVTTFFDYDYGAPCHKFDVKQIGAQLLPPLYSLVVFIFGFVGNMLVVLILINC  
 KKLKCLTDIYLLNLAISDLLFLITLPLWAHSAANEWVFGNAMCKLFTGLYHIGYFGGIFFIILLTIDRYL  
 AIVHAVFALKARTVTFGVVTSVITWLVAVFASVPGIIFTKCQKEDSVYVCGPYFPRGWNNFHTIMRNILG  
 LVLPLLIMVICYSGILKTLRLCRNEKRRHRAVRVIFTIMIVYFLFWTPYINIVILLNTFFQEFFGLSNCEST  
 SQLDQATQVTETLGMTHCCINPIIYAFVGEKFRRYLSVFFRKHITKRFCQKQPVFYRETVDGVSTNTPTS  
 TGEQEVSAAGL

TRTRPLEQKLISEEDLAANDILDYKDDDDKV

**Chromatograms:** [https://cdn.origene.com/chromatograms/mk6047\\_f03.zip](https://cdn.origene.com/chromatograms/mk6047_f03.zip)

**Restriction Sites:** SgfI-MluI

**Cloning Scheme:**



**ACCN:** NM\_001123396

**ORF Size:** 1080 bp

**OTI Disclaimer:** The molecular sequence of this clone aligns with the gene accession number as a point of reference only. However, individual transcript sequences of the same gene can differ through naturally occurring variations (e.g. polymorphisms), each with its own valid existence. This clone is substantially in agreement with the reference, but a complete review of all prevailing variants is recommended prior to use. [More info](#)

**OTI Annotation:** This clone was engineered to express the complete ORF with an expression tag. Expression varies depending on the nature of the gene.

**Components:** The ORF clone is ion-exchange column purified and shipped in a 2D barcoded Matrix tube containing 10ug of transfection-ready, dried plasmid DNA (reconstitute with 100 ul of water).

**Reconstitution Method:**

1. Centrifuge at 5,000xg for 5min.
2. Carefully open the tube and add 100ul of sterile water to dissolve the DNA.
3. Close the tube and incubate for 10 minutes at room temperature.
4. Briefly vortex the tube and then do a quick spin (less than 5000xg) to concentrate the liquid at the bottom.
5. Store the suspended plasmid at -20°C. The DNA is stable for at least one year from date of shipping when stored at -20°C.

**RefSeq:** [NM\\_001123396.4](#)

**RefSeq ORF:** 1083 bp

**Locus ID:** 729230

**UniProt ID:** [P41597](#)

**Cytogenetics:** 3p21.31

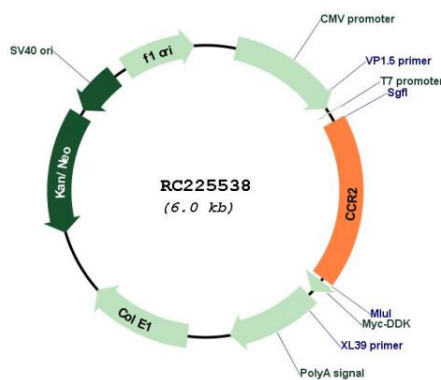
**Protein Families:** Druggable Genome, Transmembrane

**Protein Pathways:** Chemokine signaling pathway, Cytokine-cytokine receptor interaction

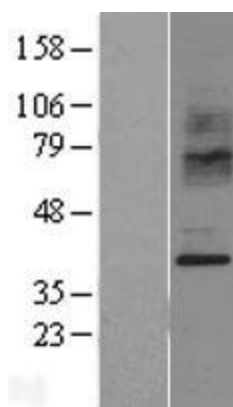
**MW:** 40.9 kDa

**Gene Summary:** The protein encoded by this gene is a receptor for monocyte chemoattractant protein-1, a chemokine which specifically mediates monocyte chemotaxis. Monocyte chemoattractant protein-1 is involved in monocyte infiltration in inflammatory diseases such as rheumatoid arthritis as well as in the inflammatory response against tumors. The encoded protein mediates agonist-dependent calcium mobilization and inhibition of adenylyl cyclase. This protein can also be a coreceptor with CD4 for HIV-1 infection. This gene is located in the chemokine receptor gene cluster region of chromosome 3. [provided by RefSeq, Aug 2017]

### Product images:



Circular map for RC225538



Western blot validation of overexpression lysate (Cat# [LY426625]) using anti-DDK antibody (Cat# [TA50011-100]). Left: Cell lysates from untransfected HEK293T cells; Right: Cell lysates from HEK293T cells transfected with RC225538 using transfection reagent MegaTran 2.0 (Cat# [TT210002]).