

Product datasheet for RC225535

HSPBP1 (NM_001130106) Human Tagged ORF Clone

Product data:

Product Type:	Expression Plasmids
Product Name:	HSPBP1 (NM_001130106) Human Tagged ORF Clone
Tag:	Myc-DDK
Symbol:	HSPBP1
Synonyms:	FES1
Mammalian Cell Selection:	Neomycin
Vector:	pCMV6-Entry (PS100001)
E. coli Selection:	Kanamycin (25 ug/mL)
ORF Nucleotide Sequence:	>RC225535 ORF sequence Red=Cloning site Blue=ORF Green=Tags(s)

TTTTGTAATACGACTCACTATAGGGCGGCCGGAATTCGTCGACTGGATCCGGTACCGAGGAGATCTGCCGCCGCGATCGCC

ATGTCAGACGAAGGCTCAAGGGGGAGCCGCTGCCCTGGCGCTGCCCCGGCCTCCAGGGTTGCTCTT
CAGGGGGCGGGCGGGCGGCTCCTCGGCTGGGGGCTCGGGCAATCCCGGCCCCACGCAACCTCCAAGG
CTTGCTGCAGATGGCCATCACCGCGGGCTGAAGAGCCAGACCCTCCTCAGAACCGATGAGTGAGGAG
AGGCGTCAGTGGCTGCAGGAGGCCATGTCGGCTGCCTCCGAGGCCAGCGGGAGGAGGTGGAGCAGATGA
AGAGCTGCCTCCGAGTGTGTACAGCCATGCCCCCACTGCTGGGGAGGCCGAGCAGGCGGCCGACCA
GCAAGAGCGAGAGGGGGCCCTGGAGTGTGCGCCGACCTGTGTGAGAACATGGACAATGCCCGAGACTTC
TGCCAGCTGTCTGGCATGCACCTGCTGGTGGGCCGGTACCTGGAGGCGGGGGCTGCGGGACTGCGGTGGC
GGGCGGCACAGCTCATCGGCACGTGCAGTCAAGCTGGCAGCCATCCAGGAGCAGGTGCTGGGCTGGG
TGCCCTGCGTAAGCTGCTGCGGCTGCTGGACCGGACGCTGCGACACGGTGCAGCGTCAAGGCCCTTTC
GCCATCTCCTGTCTGGTCCGAGAGCAGGAGGCTGGGCTGCTGCAGTTCCTCCGCTGGACGGTTCTCTG
TGTTGATGAGGGCCATGCAGCAGCAGGTGCAGAAGCTCAAGGTCAAATCAGCATTCTGCTGCAGAACCT
GCTGGTGGGCCACCCTGAACACAAAGGGACCCTGTGCTCCATGGGGATGGTCCAGCAGCTGGTGGCCCTG
GTGCGGACAGACAGCCCTTCCACGAGCACGTGCTTGAGCCCTGTGCAGCCTGGTGCAGACATTC
CGCAGGGTGTGCGCGAGTGTGGGAGCCGGAACCTGGGCCTGGAGGAGCTCCTCCGCCACCCTGTACAGT
GCTGCAGCAGCATGAGGAGTACCAGGAGGAGCTGGAGTCTGTGAAAAGCTGCTACAGACCTGTTTCTCC
AGCCAGCGGACGACAGCATGGATCGG

ACGCGTACGCGGCCGCTCGAGCAGAACTCATCTCAGAAGAGGATCTGGCAGCAAATGATATCCTGGATT
ACAAGGATGACGACGATAAGGTTAA



[View online »](#)

Protein Sequence: >RC225535 protein sequence
Red=Cloning site Green=Tags(s)

MSDEGSRGSRPLALPPASQGCSSGGGGGGSSAGGSGNSRPPRNLLQGLLQMAITAGSEEPDPPPEPMSEE
 RRQWLQEAMSAAFRGQREEVEQMKSLRVL SQMPPTAGEAEQAADQERELELLADLCENMDNAADF
 CQLSGMHLLVGRYLEAGAAGLRWRAAQL IGTCSQNVAAIQEVLGLGALRKLRLLLDRDACDTRVVKALF
 AI SCLVREQEAGLLQFLRLDGF SVLMRAMQQVQKLVKSAFL LQNLVGHPEHKGTLCSMGMVQQLVAL
 VRTEHSPFHEHVLGALCSLVDFPQGVRECREPELGLEELLRHRCQLLQQHEEYQEELEFCEKLLQTCFS
 SPADDSMDR

TRTRPLEQKLISEEDLAANDILDYKDDDDK

Chromatograms: https://cdn.origene.com/chromatograms/mk6075_f05.zip

Restriction Sites: SgfI-MluI

Cloning Scheme:



* The last codon before the Stop codon of the ORF

ACCN: NM_001130106

ORF Size: 1077 bp

OTI Disclaimer: The molecular sequence of this clone aligns with the gene accession number as a point of reference only. However, individual transcript sequences of the same gene can differ through naturally occurring variations (e.g. polymorphisms), each with its own valid existence. This clone is substantially in agreement with the reference, but a complete review of all prevailing variants is recommended prior to use. [More info](#)

OTI Annotation: This clone was engineered to express the complete ORF with an expression tag. Expression varies depending on the nature of the gene.

Components: The ORF clone is ion-exchange column purified and shipped in a 2D barcoded Matrix tube containing 10ug of transfection-ready, dried plasmid DNA (reconstitute with 100 ul of water).

Reconstitution Method:

1. Centrifuge at 5,000xg for 5min.
2. Carefully open the tube and add 100ul of sterile water to dissolve the DNA.
3. Close the tube and incubate for 10 minutes at room temperature.
4. Briefly vortex the tube and then do a quick spin (less than 5000xg) to concentrate the liquid at the bottom.
5. Store the suspended plasmid at -20°C. The DNA is stable for at least one year from date of shipping when stored at -20°C.

RefSeq: [NM_001130106.1](#), [NP_001123578.1](#)

RefSeq Size: 1816 bp

RefSeq ORF: 1080 bp

Locus ID: 23640

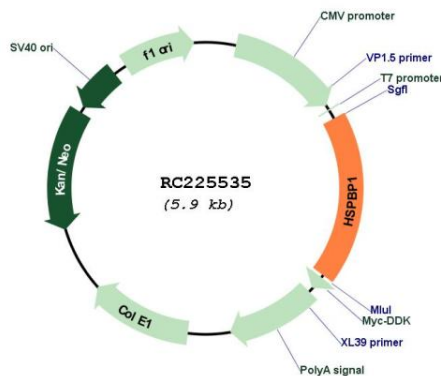
UniProt ID: [Q9NZL4](#)

Cytogenetics: 19q13.42

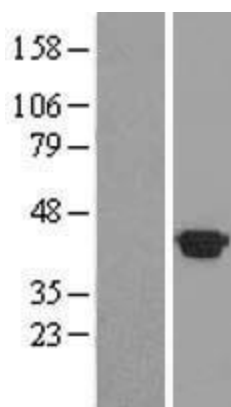
MW: 39.3 kDa

Gene Summary: Inhibits HSPA1A chaperone activity by changing the conformation of the ATP-binding domain of HSPA1A and interfering with ATP binding. Interferes with ubiquitination mediated by STUB1 and inhibits chaperone-assisted degradation of immature CFTR.[UniProtKB/Swiss-Prot Function]

Product images:



Circular map for RC225535



Western blot validation of overexpression lysate (Cat# [LY427167]) using anti-DDK antibody (Cat# [TA50011-100]). Left: Cell lysates from untransfected HEK293T cells; Right: Cell lysates from HEK293T cells transfected with RC225535 using transfection reagent MegaTran 2.0 (Cat# [TT210002]).