

## Product datasheet for RC225528

### CCRL2 (NM\_001130910) Human Tagged ORF Clone

#### Product data:

Product Type:	Expression Plasmids
Product Name:	CCRL2 (NM_001130910) Human Tagged ORF Clone
Tag:	Myc-DDK
Symbol:	CCRL2
Synonyms:	ACKR5; CKRX; CRAM; CRAM-A; CRAM-B; HCR
Mammalian Cell Selection:	Neomycin
Vector:	pCMV6-Entry (PS100001)
E. coli Selection:	Kanamycin (25 ug/mL)
ORF Nucleotide Sequence:	>RC225528 representing NM_001130910 Red=Cloning site Blue=ORF Green=Tags(s)

TTTTGTAATACGACTCACTATAGGGCGCCGGGAATTCGTCGACTGGATCCGGTACCGAGGAGATCTGCC  
GCC**CGATCGCC**

ATGATCTACACCCGTTTCTTAAAAGGCAGTCTGAAGATGGCCAATTACACGCTGGCACCAGAGGATGAAT  
ATGATGTCCTCATAGAAGGTGAAGTGGAGAGCGATGAGGCAGAGCAATGTGACAAGTATGACGCCAGGC  
ACTCTCAGCCCAGCTGGTGCCATCACTCTGCTGCTGTGTTTGTGATCGGTGTCCTGGACAATCTCCTG  
GTTGTGCTTATCCTGGTAAAATATAAAGGACTCAAACGCGTGGAAAATATCTATCTTCTAAACTTGGCAG  
TTTCTAACTTGTGTTTCTTGCTTACCCTGCCCTTCTGGGCTCATGCTGGGGCGATCCCATGTGTA  
TCTCATTGGACTGTACTTCGTGGCCTGTACAGTGAGACATTTTTCAATTGCCTTCTGACTGTGCAAAGG  
TACCTAGTGTTTTTGACAAGGGAACTTTTTCTCAGCCAGGAGGAGGGTGCCTGTGGCATCATTACAA  
GTGTCCTGGCATGGGTAACAGCCATTCTGGCCACTTTGCCTGAATTTCGTGGTTTATAAACCTCAGATGGA  
AGACCAGAAATACAAGTGTGATTTAGCAGAACTCCCTCCTGCCAGCTGATGAGACATTCTGGAAGCAT  
TTTCTGACTTTAAAAATGAACATTTTCGGTTCTTGCTCCTCCCTATTTATTTTTACATTTCTCTATGTGC  
AAATGAGAAAAACACTAAGGTTTCAGGGAGCAGAGGTATAGCCTTTTCAAGCTTGTGTTTGGCATAATGGT  
AGTCTTCTCTGATGTGGGCGCCCTACAATATGCAATTTTCTGTCCACTTTCAAAGAACAATCTCTCC  
CTGAGTGACTGCAAGAGCAGCTACAATCTGGACAAAAGTGTTCACATCACTAAACTCATCGCCACCACCC  
ACTGTGCATCAACCCTCCTGTATGCGTTTCTTGATGGGACATTTAGCAAATACCTCTGCCGCTGTTT  
CCATCTGCGTAGTAACACCCCACTTCAACCCAGGGGCGAGTCTGCACAAGGCACATCGAGGGAAGAACCT  
GACCATTCCACCGAAGTG

AG**CGGACCG**ACGCGTACGCGGCCGCTCGAGCAGAACTCATCTCAGAAGAGGATCTGGCAGCAAATGATATCC  
TGGATTACAAGGATGACGACGATAAGGTTTAA



[View online »](#)

**Protein Sequence:** >RC225528 representing NM\_001130910  
 Red=Cloning site Green=Tags(s)

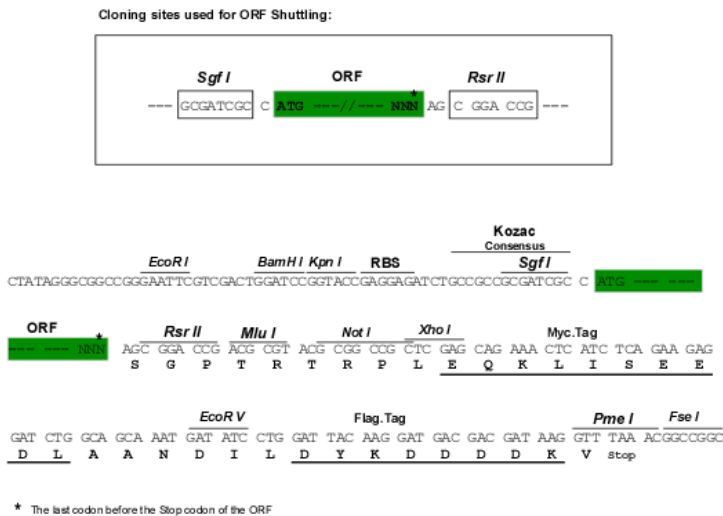
MIYTRFLKGLKMANYYTLAPEDEYDVLIEGELESDEAEQCDKYDAQALSAQLVPSLCSAVFVIGVLDNLL  
 VVLILVKYKGLKRVENIYLLNLAVSNLCFLLTLPFWAHAGGDPCKILIGLYFVGLYSETFFNCLLTVQR  
 YLVFLHKGFFSARRRVP CGIITSVLAWVTAILATLPEFVYKPKQMEDQKYKCAF SRT PFLPADET FWKH  
 FLTLKMNISVLVPLFIFTFLYVQMRKTLRFREQRYSLFKLVFAIMVVFLLMWAPYNI AFFLSTFKEHFS  
 L SDC KSSYNLDKSVHITKLIATTHCCINPLLYAFLDGTF SKYLRCRCHLRSNTPLQPRGQSAQGTSREEP  
 DHSTEV

SGP TRTRRLEQKLI SEEDLAANDILDYKDDDDKV

**Chromatograms:** [https://cdn.origene.com/chromatograms/mg4456\\_c03.zip](https://cdn.origene.com/chromatograms/mg4456_c03.zip)

**Restriction Sites:** SgfI-RsrII

**Cloning Scheme:**



**ACCN:** NM\_001130910

**ORF Size:** 1068 bp

**OTI Disclaimer:** The molecular sequence of this clone aligns with the gene accession number as a point of reference only. However, individual transcript sequences of the same gene can differ through naturally occurring variations (e.g. polymorphisms), each with its own valid existence. This clone is substantially in agreement with the reference, but a complete review of all prevailing variants is recommended prior to use. [More info](#)

**OTI Annotation:** This clone was engineered to express the complete ORF with an expression tag. Expression varies depending on the nature of the gene.

**Components:** The ORF clone is ion-exchange column purified and shipped in a 2D barcoded Matrix tube containing 10ug of transfection-ready, dried plasmid DNA (reconstitute with 100 ul of water).

**Reconstitution Method:**

1. Centrifuge at 5,000xg for 5min.
2. Carefully open the tube and add 100ul of sterile water to dissolve the DNA.
3. Close the tube and incubate for 10 minutes at room temperature.
4. Briefly vortex the tube and then do a quick spin (less than 5000xg) to concentrate the liquid at the bottom.
5. Store the suspended plasmid at -20°C. The DNA is stable for at least one year from date of shipping when stored at -20°C.

**RefSeq:** [NM\\_001130910.2](#)

**RefSeq ORF:** 1071 bp

**Locus ID:** 9034

**UniProt ID:** [O00421](#)

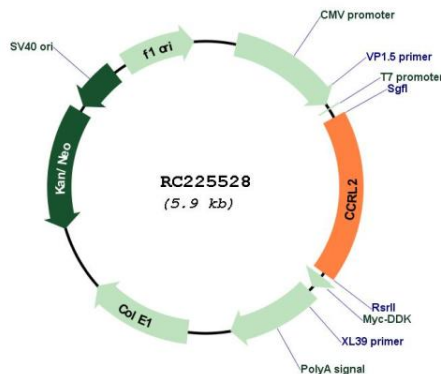
**Cytogenetics:** 3p21.31

**Protein Families:** Druggable Genome, GPCR, Transmembrane

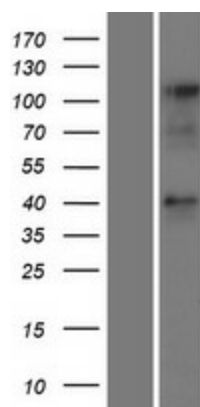
**MW:** 40.8 kDa

**Gene Summary:** This gene encodes a chemokine receptor like protein, which is predicted to be a seven transmembrane protein and most closely related to CCR1. Chemokines and their receptors mediated signal transduction are critical for the recruitment of effector immune cells to the site of inflammation. This gene is expressed at high levels in primary neutrophils and primary monocytes, and is further upregulated on neutrophil activation and during monocyte to macrophage differentiation. The function of this gene is unknown. This gene is mapped to the region where the chemokine receptor gene cluster is located. [provided by RefSeq, Jul 2008]

## Product images:



Circular map for RC225528



Western blot validation of overexpression lysate (Cat# [LY427300]) using anti-DDK antibody (Cat# [TA50011-100]). Left: Cell lysates from untransfected HEK293T cells; Right: Cell lysates from HEK293T cells transfected with RC225528 using transfection reagent MegaTran 2.0 (Cat# [TT210002]).