

Product datasheet for RC225524

TEDC1 (NM_001134877) Human Tagged ORF Clone

Product data:

Product Type: Expression Plasmids
Product Name: TEDC1 (NM_001134877) Human Tagged ORF Clone
Tag: Myc-DDK
Symbol: TEDC1
Synonyms: C14orf80
Mammalian Cell Selection: Neomycin
Vector: pCMV6-Entry (PS100001)
E. coli Selection: Kanamycin (25 ug/mL)
ORF Nucleotide Sequence: >RC225524 representing NM_001134877
 Red=Cloning site Blue=ORF Green=Tags(s)

TTTTGTAATACGACTCACTATAGGGCGGCCGGAATTCGTCGACTGGATCCGGTACCGAGGAGATCTGCC
 GCC**CGATCGCC**

ATGTCCGGCCAGCGCGGTGATTGGACCTCCGCGCTCTGGCAGCTCCTCTTCCGTGTGCTCTCGCCACTCC
 CTGCGGGCAACGCCTTGGCATCGCTCGCCCTGGAGGTCCAAGCCCGCTTGGTGAAGTCAGCACTATGCTC
 CCAGGGCTACCCGAGGCTGGCACTGGCACAACCTGAGGATGGCTCGCAGGGCAGTCGGGAGCTGCTG
 CTGGCTCTGTCTGGCTCTTGGCCGAGGACCTGTGCCGAGCAGATGCTGGCCAGGCCGAGTGCCTC
 TGGGTGACGAGATGACTGTGTGCCAGTGTGAGGCCCTGGCCAGCCCTGGCCACCTGCACCCACATGGA
 AGCAGAGGGTCTGTGGATGTCCGCATGTGCAGTGGCTGATGGGAAAGCTGCGGTTCCGGTGGCGCCAG
 CTGGTGTCCAGTCAGCAGGAGCAGTGCGCCCTCCTGAGCAAGCTGCTGCGGACTCTGGAGCGTGAGAACC
 AGCGCCTGGAGGCTGTCTGGCGTGGCGGCGCTCTGAGCTGGTCTTCTGGCGGTGGATGGACACGGTCTT
 GGGCACCTGTGCCCGGAGGTGCCTGCTGCAGCCTCACAGCCACCTTCTGCCCCTGGGTCCCGAGCGC
 GGGGTGGCGAGTTGGACCTGGTAGTGCGGGAGCTGCAGGCACTGGAGGAGGAGCTGCGGGAGGCTGCGG
 AGCGCAGCGGGCGGCCCTGGGAGCCAAGGCTGGAGGCTGTGGACGGGGCCAGAGTGGAGTGCCGCGCG
 GCGGGCCTCTCGGAGGCTGTGAAAAGGAGCTGGGAGCTCTACAGCAGTGTGGGAGCGAGACGGTGCC
 CCGGCCAGCCCCATGGGCCACACCGGCTGGTGTGACGAGAGGATGGGGCAGCAGGGGACCGGGACCTGC
 GGGCAGCTGTGGTATCAGGACGCTGAGGAGCCAGGAGGCTGCCTGGAGGCGGTGCTACGTCGACTACA
 GGGACAGTGTGCGCAGGAAGTGGCCAGGCTGGTGGGAGCCCGCCCTGGTCTCATCTGGATCCCGCCACCT
 GGACGC

ACGCGTACGCGGCCGCTCGAGCAGAACTCATCTCAGAAGAGGATCTGGCAGCAAATGATATCCTGGATT
 ACAAGGATGACGACGATAAGGTTAA



[View online »](#)

Protein Sequence: >RC225524 representing NM_001134877
Red=Cloning site Green=Tags(s)

MSGQRGDWTSALWQLLFRVL SPLPAGNALASL ALEVQARLVKSALCSQGYPRLAL AQLPEDGSQGSRELL
 LALSWLLARGPVPEQMLAQARVPLGDEMTVCQCEALASPGPPAPHMEAEGPVDVRHVQWLMGKLRFRWRQ
 LVSSQQEQCALLSKLLRTLERENQRLEAVLAWRRSELVFWWRWMDTVLGTCAPEVPAASQPTFLPWVPER
 GGGELDLVVRELQALEEELREAAERRRAAWEAKAGGCGRGPESAAARRASREAVEKELGALQQCWERDGG
 PAQPHGPHRLVRREDGAAGDRDLRAAVVIRTLRSQEACLEAVLRRLQGGCRQELARLVGARPLIWIPIPP
 GR

TRTRPLEQKLISEEDLAANDILDYKDDDDKV

Chromatograms: https://cdn.origene.com/chromatograms/mk8054_d02.zip

Restriction Sites: SgfI-MluI

Cloning Scheme:



ACCN: NM_001134877

ORF Size: 1056 bp

OTI Disclaimer: The molecular sequence of this clone aligns with the gene accession number as a point of reference only. However, individual transcript sequences of the same gene can differ through naturally occurring variations (e.g. polymorphisms), each with its own valid existence. This clone is substantially in agreement with the reference, but a complete review of all prevailing variants is recommended prior to use. [More info](#)

OTI Annotation: This clone was engineered to express the complete ORF with an expression tag. Expression varies depending on the nature of the gene.

Components: The ORF clone is ion-exchange column purified and shipped in a 2D barcoded Matrix tube containing 10ug of transfection-ready, dried plasmid DNA (reconstitute with 100 ul of water).

Reconstitution Method:

1. Centrifuge at 5,000xg for 5min.
2. Carefully open the tube and add 100ul of sterile water to dissolve the DNA.
3. Close the tube and incubate for 10 minutes at room temperature.
4. Briefly vortex the tube and then do a quick spin (less than 5000xg) to concentrate the liquid at the bottom.
5. Store the suspended plasmid at -20°C. The DNA is stable for at least one year from date of shipping when stored at -20°C.

RefSeq: [NM_001134877.1](#), [NP_001128349.1](#)

RefSeq ORF: 1059 bp

Locus ID: 283643

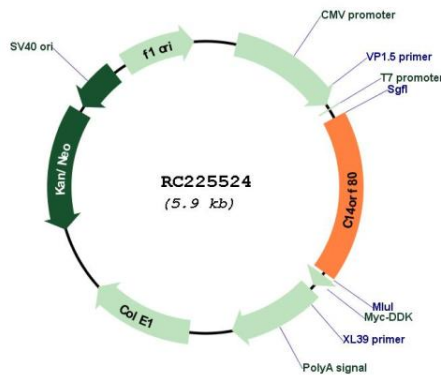
UniProt ID: [Q86SX3](#)

Cytogenetics: 14q32.33

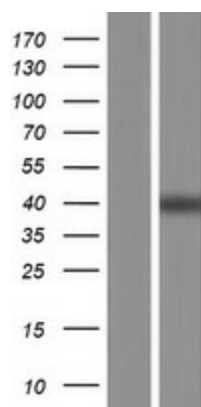
MW: 38.9 kDa

Gene Summary: May play a role in counteracting perturbation of actin filaments, such as after treatment with the actin depolymerizing microbial metabolite Chivosazole F.[UniProtKB/Swiss-Prot Function]

Product images:



Circular map for RC225524



Western blot validation of overexpression lysate (Cat# [LY427509]) using anti-DDK antibody (Cat# [TA50011-100]). Left: Cell lysates from untransfected HEK293T cells; Right: Cell lysates from HEK293T cells transfected with RC225524 using transfection reagent MegaTran 2.0 (Cat# [TT210002]).