

## Product datasheet for RC225520

### LRR69 (NM\_001129890) Human Tagged ORF Clone

#### Product data:

Product Type:	Expression Plasmids
Product Name:	LRR69 (NM_001129890) Human Tagged ORF Clone
Tag:	Myc-DDK
Symbol:	LRR69
Mammalian Cell Selection:	Neomycin
Vector:	pCMV6-Entry (PS100001)
E. coli Selection:	Kanamycin (25 ug/mL)
ORF Nucleotide Sequence:	>RC225520 representing NM_001129890 Red=Cloning site Blue=ORF Green=Tags(s)

TTTTGTAATACGACTCACTATAGGGCGGCCGGAATTCGTCGACTGGATCCGGTACCGAGGAGATCTGCC  
GCCCGATCGCC

ATGACTGAGAGATTGTTAATAAAAGCATTGAGTGGTGGTAAAAATACGAAGATCATTACTTTGAATGGGA  
AGAAGATGACAAAGATGCCCTCAGCATTAGGAAAACCTGCCTGGCCTGAAGACTCTAGTCCTTCAGAATAA  
CCTAATCCCCAAAGTGTGTCCAGAGTTATGCAACTTGACCCAGTTGACAACACTAAATCTGGGAAACAAC  
CTTTTAGAAGAAGTTCGGAAGAGATGAAATATCTTACATCTCTGAAGAATCTCCATTTATCTGGAATA  
GGATCTGTAGATTTGCACCTGGAGCCTGTGATGGCTTACAAAATTTAATCTGCTTAATCTGAACAACAA  
TCATCTTACGCAGCTTCCTCAAGAAGTCAGCAGATTAAGTCTTACTTATATGAGTATAAATTATAAC  
CAACTAGCCAGCATTCTAGAGAACTTTGTTTTCTTGAGAATCTTGTGAACTTCAACTTAACTACAATC  
AGCTGATATGCATACCTGAAGAGATTAATTTCTGAAGAAGCTTCAGAAGCTTTTGTAGCCAGAAACAA  
CATTGGAGTTTGGCCGAGGAACTTTGTGATCTTAAAAACTAAGAATCCTAGACATAGCTGGAAATATT  
ATTCAGATATTTCCATCAGGATTTGAGGATCTGAAGCTGAGGGAATCTACTGTGAGGGAAACCCACTGT  
TCCTGCAGCAGCCAGTATTTCTACACAGCAGGAGAACGCTCTGGAGTCTACAGGAAATAACATCAAGATT  
TGTAATGAATCAGCTAGCAGAAAATAACCTTTCTAATGGATGACATAGAACGGTACCCACAAGTCAGG  
AGCATGATCTCTCAGGAAAAACATGTGCAATATGTGGACAGTACTTTATAACCGTATGGCTGGAATGTG  
TTCGATTTGTTCTCCACCAAAGGACTGGAAGATAAGCAAGAATCTGAAGCTGGTGCCTCTCCAAGTATT  
AATTTGTTCTTACAAATGTTTTACTCAACGTGACCCTAACCTCTTTGGAATTGCTCAGGTG

ACGCGTACGCGGCCGCTCGAGCAGAAAACCTCATCTCAGAAGAGGATCTGGCAGCAAATGATATCCTGGATT  
ACAAGGATGACGACGATAAGGTTTAA



[View online »](#)

**Protein Sequence:** >RC225520 representing NM\_001129890  
Red=Cloning site Green=Tags(s)

MTERLLIKALSGGKNTKIITLNGKMTKMPKALGKLPGLKTLVLQNNLIPKVCPELCNLQLTTLNLGNN  
 LLEEVPPEEMKYL TSLKNLHLSGNRICRFAPGACDGLQNLILLNLNNHLTQLPQEVSRKSLTYMSINYN  
 QLASIPRELCFLENLVELQLNYNQLICIPPEEIKFLKQLKLLARNNIGVLPPELCKLRLDIAGNI  
 IQIFPSGFQDLKREFYCEGNPLFLQQPVISTQQENVWSLQEITSRFVMNQLAENNPFLMDDIERYPQVR  
 SMISQGKTC AICGQYFITVWLECVRFVPPPKDWKISKNLKLVPLQVLICSYKCFTRQDPNLF GIAQV

TRTRPLEQKLISEEDLAANDILDYKDDDDKV

**Chromatograms:** [https://cdn.origene.com/chromatograms/mk8034\\_h05.zip](https://cdn.origene.com/chromatograms/mk8034_h05.zip)

**Restriction Sites:** Sgfl-MluI

**Cloning Scheme:**

Cloning sites used for ORF Shuttling:



**ACCN:** NM\_001129890

**ORF Size:** 1041 bp

**OTI Disclaimer:** The molecular sequence of this clone aligns with the gene accession number as a point of reference only. However, individual transcript sequences of the same gene can differ through naturally occurring variations (e.g. polymorphisms), each with its own valid existence. This clone is substantially in agreement with the reference, but a complete review of all prevailing variants is recommended prior to use. [More info](#)

**OTI Annotation:** This clone was engineered to express the complete ORF with an expression tag. Expression varies depending on the nature of the gene.

**Components:** The ORF clone is ion-exchange column purified and shipped in a 2D barcoded Matrix tube containing 10ug of transfection-ready, dried plasmid DNA (reconstitute with 100 ul of water).

- Reconstitution Method:**
1. Centrifuge at 5,000xg for 5min.
  2. Carefully open the tube and add 100ul of sterile water to dissolve the DNA.
  3. Close the tube and incubate for 10 minutes at room temperature.
  4. Briefly vortex the tube and then do a quick spin (less than 5000xg) to concentrate the liquid at the bottom.
  5. Store the suspended plasmid at -20°C. The DNA is stable for at least one year from date of shipping when stored at -20°C.

**RefSeq:** [NM\\_001129890.1](#), [NP\\_001123362.1](#)

**RefSeq ORF:** 1044 bp

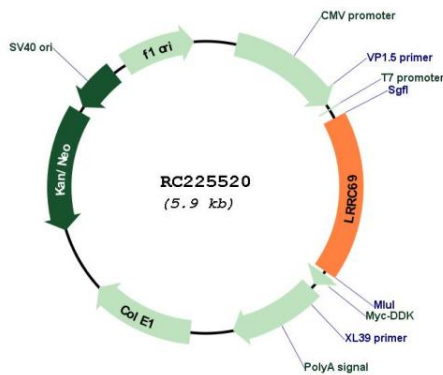
**Locus ID:** 100130742

**UniProt ID:** [Q6ZNQ3](#)

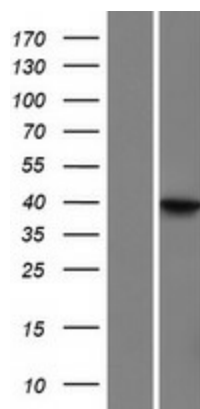
**Cytogenetics:** 8q21.3

**MW:** 39.4 kDa

**Product images:**



Circular map for RC225520



Western blot validation of overexpression lysate (Cat# [LY427074]) using anti-DDK antibody (Cat# [TA50011-100]). Left: Cell lysates from untransfected HEK293T cells; Right: Cell lysates from HEK293T cells transfected with RC225520 using transfection reagent MegaTran 2.0 (Cat# [TT210002]).