

## Product datasheet for **RC225516**

### PCBP3 (NM\_001130141) Human Tagged ORF Clone

#### Product data:

**Product Type:** Expression Plasmids  
**Product Name:** PCBP3 (NM\_001130141) Human Tagged ORF Clone  
**Tag:** Myc-DDK  
**Symbol:** PCBP3  
**Synonyms:** ALPHA-CP3; PCBP3-OT1; PCBP3OT  
**Mammalian Cell Selection:** Neomycin  
**Vector:** pCMV6-Entry (PS100001)  
**E. coli Selection:** Kanamycin (25 ug/mL)  
**ORF Nucleotide Sequence:** >RC225516 representing NM\_001130141  
**Red=Cloning site Blue=ORF Green=Tags(s)**

TTTTGTAATACGACTCACTATAGGGCGCCGGGAATTCGTCGACTGGATCCGGTACCGAGGAGATCTGCC  
GCC**CGCATCGCC**

ATGGGGGAAGGTGACGCCTTCTGGGCCCATCTGTCTCCTCACAGCACCCCTCAGCACCTTAAGCCACC  
ACCCTCAGCCACAATTTGGCAGAAGGATGGAGTCCAAGGTCTCAGAAGGTGGCCTGAATGTGACCCTCAC  
CATCCGCCTGCTGATGCATGGAAAGGAAGTTGGAAGCATCATCGGAAGAAAGGAGAACTGTGAAGAAG  
ATGCGTGAGGAGAGTGGTCAAGGATCAACATCTCAGAGGGAACTGCCAGAGAGGATTGTGACCATCA  
CAGGCCCCACAGACGCCATCTTCAAGGCCTTTGCCATGATCGCATACAAGTTTGAGGAGGATATCATCAA  
CTCCATGAGCAACAGCCCTGCCACCAGCAAGCCCCAGTGACGCTGAGGCTGGTGGTGCCTGCCAGCCAG  
TGTGGGTCCCTGATCGGCAAAGGAGGCTCCAAGATCAAGGAGATCAGGGAGTCCACAGGTGCCAGGTGC  
AGGTGGCTGGGGACATGCTGCCAACTCCACGGAGCGAGCGGTGACCATCTCGGGGACCCAGATGCCAT  
CATCCAGTGCCTCAAGCAGATCTGTGTGGTCTGCTGGAGGCCTACACAATCCAGGGACAGTATGCCATC  
CCTCACCCGGATTTGACCAAGCTCCACCAGTTGGCCATGCAGCAAACCCCTTTCTCCCTCGGACAGA  
CCAACCCCGCTTTCCCGGAGAAAAGCTGCCTTACACTCCTCCGAAGAAGCTCAAATCTGATGGGCCA  
GTCATCAGGTCTGGACGCCAGCCACCGGCCAGCACTCATGAGCTCACCATTCCCAATGATCTAATAGGC  
TGCATAATTGGACGCCAAGGGACCAAAATCAATGAAATTCGACAGATGTCTGGAGCTCAGATCAAATCG  
CCAACGCCACGGAAGGGTCTCAGAGCGTCAGATCACCATCACGGGGACCCCGGCCAACATCAGCCTTGC  
CCAGTATCTCATCAACGCCAGGCTGACGTCGGAGGTCACCGGGATGGGCACGCTG

**ACGCGT**ACGCGGCCGCTCGAGCAGAACTCATCTCAGAAGAGGATCTGGCAGCAAATGATATCCTGGATT  
ACAAGGATGACGACGATAAGGTTTAA



[View online »](#)

**Protein Sequence:** >RC225516 representing NM\_001130141  
Red=Cloning site Green=Tags(s)

MGEGDAFWAPSVLPHSTLSTLSHHPQPQFGRMESKVSEGLNVTLTIRLLMHGKEVGSIIIGKKGETVKK  
MREESGARINISEGNCPERIVTITGPTDAIFKAFAMIAYKFEEDIINSMSNSPATSKPPVTLRLVVPASQ  
CGSLIGKGGSKIKEIRESTGAQVQVAGDMLPNSTERAVTISGTPDAIIQCVKQICVVMLEAYTIQGQYAI  
PHPDLTKLHQLAMQQTFFPPLGQTNPAFPGEKPLHSSEEAQNLMGQSSGLDASPPASTHELTIPNDLIG  
CIIGRQGTKINEIRQMSGAQIKIANATEGSSERQITITGTPANISLAQYLINARLTSEVTGMGTL

TRTRPLEQKLISEEDLAANDILDYKDDDDKV

**Chromatograms:** [https://cdn.origene.com/chromatograms/ja1556\\_g03.zip](https://cdn.origene.com/chromatograms/ja1556_g03.zip)

**Restriction Sites:** SgfI-MluI

**Cloning Scheme:**



**ACCN:** NM\_001130141

**ORF Size:** 1035 bp

**OTI Disclaimer:** The molecular sequence of this clone aligns with the gene accession number as a point of reference only. However, individual transcript sequences of the same gene can differ through naturally occurring variations (e.g. polymorphisms), each with its own valid existence. This clone is substantially in agreement with the reference, but a complete review of all prevailing variants is recommended prior to use. [More info](#)

**OTI Annotation:** This clone was engineered to express the complete ORF with an expression tag. Expression varies depending on the nature of the gene.

**Components:** The ORF clone is ion-exchange column purified and shipped in a 2D barcoded Matrix tube containing 10ug of transfection-ready, dried plasmid DNA (reconstitute with 100 ul of water).

**Reconstitution Method:**

1. Centrifuge at 5,000xg for 5min.
2. Carefully open the tube and add 100ul of sterile water to dissolve the DNA.
3. Close the tube and incubate for 10 minutes at room temperature.
4. Briefly vortex the tube and then do a quick spin (less than 5000xg) to concentrate the liquid at the bottom.
5. Store the suspended plasmid at -20°C. The DNA is stable for at least one year from date of shipping when stored at -20°C.

**Note:** Plasmids are not sterile. For experiments where strict sterility is required, filtration with 0.22um filter is required.

**RefSeq:** [NM\\_001130141.2](#)

**RefSeq ORF:** 1038 bp

**Locus ID:** 54039

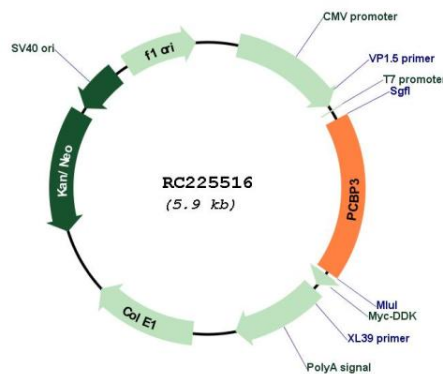
**UniProt ID:** [P57721](#)

**Cytogenetics:** 21q22.3

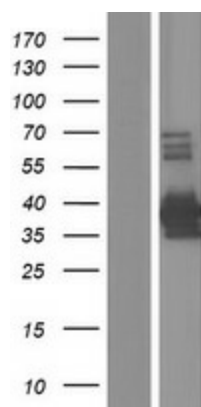
**MW:** 36.6 kDa

**Gene Summary:** This gene encodes a member of the KH-domain protein subfamily. Proteins of this subfamily, also referred to as alpha-CPs, bind to RNA with a specificity for C-rich pyrimidine regions. Alpha-CPs play important roles in post-transcriptional activities and have different cellular distributions. The protein encoded by this gene lacks the nuclear localization signals found in other subfamily members. Alternative splicing results in multiple transcript variants encoding distinct isoforms. [provided by RefSeq, Jan 2017]

### Product images:



Circular map for RC225516



Western blot validation of overexpression lysate (Cat# [LY427177]) using anti-DDK antibody (Cat# [TA50011-100]). Left: Cell lysates from untransfected HEK293T cells; Right: Cell lysates from HEK293T cells transfected with RC225516 using transfection reagent MegaTran 2.0 (Cat# [TT210002]).