

Product datasheet for RC225515

C17orf76 (LRRC75A) (NM_001113567) Human Tagged ORF Clone

Product data:

Product Type:	Expression Plasmids
Product Name:	C17orf76 (LRRC75A) (NM_001113567) Human Tagged ORF Clone
Tag:	Myc-DDK
Symbol:	C17orf76
Synonyms:	C17orf76; FAM211A
Mammalian Cell Selection:	Neomycin
Vector:	pCMV6-Entry (PS100001)
E. coli Selection:	Kanamycin (25 ug/mL)
ORF Nucleotide Sequence:	>RC225515 representing NM_001113567 Red=Cloning site Blue=ORF Green=Tags(s)

TTTTGTAATACGACTCACTATAGGGCGGCCGGAATTCGTCGACTGGATCCGGTACCGAGGAGATCTGCC
GCC**CGATCGCC**

ATGGGCACCCGGCAGACCAAGGGCAGCCTGGCGGAGAGAGCCAGCCCCGGCGCCGCGCGGGCCCCGAC
GCGAACGGCCGGACTTCTGGGCGTCGCTGCTGCGCGCCGGGACAAGGCGGGCGCGCGGGCGCGGG
GATGCCCCCTACCACGGCGAGTCGGCATGGTCCAGGAGCTGCTGCGGATGGTGCAGGCGCGGGCGG
GAGGAGGCGGGGACGCTGCTGCAGCACCTGCGCCAGGACCTGGGCATGGAGTCGACCTCGTAGACGACG
TTCTGTATCGCTACGCCAGCTTCCGGAACCTGGTGGACCCATCACACAGACCTCATCATCAGCCTGGC
ACGCTACATCCACTGTCCCAAGCCGGAAGGCGATGCACTGGGCGCCATGGAGAAGCTGTGCCGGCAGCTG
ACATACCACCTCAGCCCCCACTCCCACTGGAGGCGGCACCGGGGCTGGTAAAAAGGAAGCCACAGGCT
GCCTCAAGGCTGTCTGGCCGGAAGCCCCCAGACAACACAGTGGACCTGTGGGAATCCCACTGACCTC
CCGAGACCTGGAGCGGGTGACCAGCTACCTACAGCGCTGTGGGAGCAGGTAGACAGCGTGGAGCTGGGC
TTCACAGGCTCACGGACGACATGGTCTGCAGCTGCTGCCAGCACTCAGCACCTGCCCGCCTACCA
CACTGGCACTCAATGGCAACCGTTGACCCGGGCGCTGCTGCGGACCTCACTGACATCCTTAAGGATCC
CAGCAAGTTCCCCAATGTCACGTGGATTGACCTGGGCAACAACGTGGACATCTTCTCCTTGCCCCAGCCC
TTCTGCTCAGCCTGCGCAAGCGCTCCCAAAGCAGGGCCACCTACCCACCATCTGGAGCTGGGTGAGG
GCCCAGGCAGTGGGAGGAGGTCCGGGAAGGGACAGTAGGCCAGGAGACCCTGGAGGGGCCCTGTGGC
ACCTGCCGAAGACCACCATGAGGCAAGGAGACTGTAGCTGCAGCTCAGACG

ACGCGTACGCGGCCGCTCGAGCAGAACTCATCTCAGAAGAGGATCTGGCAGCAATGATATCCTGGATT
ACAAGGATGACGACGATAAGGTTTAA



[View online »](#)

Protein Sequence: >RC225515 representing NM_001113567
Red=Cloning site Green=Tags(s)

MGTRQTKGSLAERASPGAAPGPRRERPDFWASLLL RAGDKAGRAGAGMPPYHRRVGMVQELLRMVRQGR
 EEAGTLLQHLRQDLGMESTSLDDVLYRYASFRLVDPITHDLIIISLARYIHCPKPEGDALGAMEKLCRQL
 TYHLSPHSQWRRHRGLV KRKPQACLKAVLAGSPPDNTVDLSGIPLTSRDLERVTSYLQRCGEQVDSVELG
 FTGLTDDMYLQLLPALSTL PRL TTLALNGNRL TRAVLRDLTDILKDP SKFPNVTWIDLGNVDFISLPQP
 FLLSLRKRSPKQGHLP T ILELGE GPGSGEEVREGTVGQEDP GGGPVAPAEDHHEGKETVAAAQT

TRTRPLEQKLISEEDLAANDILDYKDDDDKV

Chromatograms: https://cdn.origene.com/chromatograms/mk8033_h05.zip

Restriction Sites: SgfI-MluI

Cloning Scheme:

Cloning sites used for ORF Shuttling:



* The last codon before the Stop codon of the ORF

ACCN: NM_001113567

ORF Size: 1032 bp

OTI Disclaimer: The molecular sequence of this clone aligns with the gene accession number as a point of reference only. However, individual transcript sequences of the same gene can differ through naturally occurring variations (e.g. polymorphisms), each with its own valid existence. This clone is substantially in agreement with the reference, but a complete review of all prevailing variants is recommended prior to use. [More info](#)

OTI Annotation: This clone was engineered to express the complete ORF with an expression tag. Expression varies depending on the nature of the gene.

Components: The ORF clone is ion-exchange column purified and shipped in a 2D barcoded Matrix tube containing 10ug of transfection-ready, dried plasmid DNA (reconstitute with 100 ul of water).

- Reconstitution Method:**
1. Centrifuge at 5,000xg for 5min.
 2. Carefully open the tube and add 100ul of sterile water to dissolve the DNA.
 3. Close the tube and incubate for 10 minutes at room temperature.
 4. Briefly vortex the tube and then do a quick spin (less than 5000xg) to concentrate the liquid at the bottom.
 5. Store the suspended plasmid at -20°C. The DNA is stable for at least one year from date of shipping when stored at -20°C.

RefSeq: [NM_001113567.3](#)

RefSeq ORF: 1035 bp

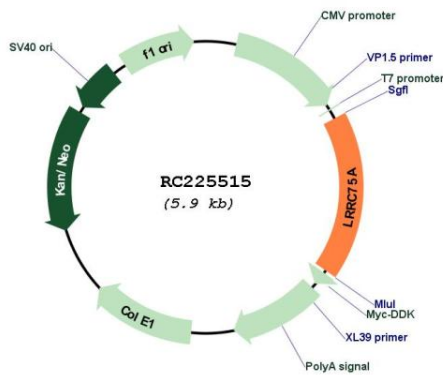
Locus ID: 388341

UniProt ID: [Q8NAA5](#)

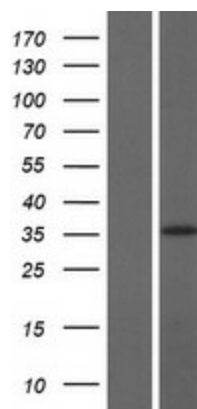
Cytogenetics: 17p11.2

MW: 37.6 kDa

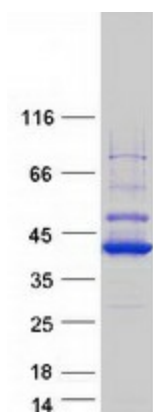
Product images:



Circular map for RC225515



Western blot validation of overexpression lysate (Cat# [LY426437]) using anti-DDK antibody (Cat# [TA50011-100]). Left: Cell lysates from untransfected HEK293T cells; Right: Cell lysates from HEK293T cells transfected with RC225515 using transfection reagent MegaTran 2.0 (Cat# [TT210002]).



Coomassie blue staining of purified LRRC75A protein (Cat# [TP325515]). The protein was produced from HEK293T cells transfected with LRRC75A cDNA clone (Cat# RC225515) using MegaTran 2.0 (Cat# [TT210002]).