

## Product datasheet for RC225510

### LRRC23 (NM\_001135217) Human Tagged ORF Clone

#### Product data:

Product Type:	Expression Plasmids
Product Name:	LRRC23 (NM_001135217) Human Tagged ORF Clone
Tag:	Myc-DDK
Symbol:	LRRC23
Synonyms:	LRPB7
Vector:	pCMV6-Entry (PS100001)
E. coli Selection:	Kanamycin (25 ug/mL)
Cell Selection:	Neomycin
ORF Nucleotide Sequence:	>RC225510 ORF sequence Red=Cloning site Blue=ORF Green=Tags(s)

TTTTGTAATACGACTCACTATAGGGCGCCGGGAATTCGTCGACTGGATCCGGTACCGAGGAGATCTGCC  
GCC**CGGATCGCC**

ATGTCAGATGAAGATGATCTAGAAGACTCTGAGCCAGACCAGGATGATTCTGAGAAAGAAGAGGACGAGA  
AGGAGACAGAGGGGGGAGGACTACAGAAAAGAGGGGAAGAGTCCCTGAGGAATGGTGTCCACCCC  
CCTCACGGAGGACATGATGAAGGAAGGGCTTTCTCTGCTCTGTAAGACAGGCAATGGGCTGGCTCATGCT  
TATGTCAAGCTGGAGTTAAAGAGAGGGACCTGACAGACATCTACTTGTGCGCTCCTACATCCATCTGC  
GCTATGTGGATATTTCTGAGAACCACCTGACAGACCTGTCTCCACTCAACTACCTCACCCACCTGCCTG  
GCTCAAGGCTGATGGCAATCTGCTGCGAAGTGCCAGATGAATGAACTGCCCTACCTGCAGATTGCTAGT  
TTTGCTTATAACCAGATTACTGACACTGAAGGCATCTCTCATCCTCGTCTTGAACCCCTGAATCTCAAAG  
GGAACAGCATCCACATGGTGACAGGTCTGGACCCCGAGAAGTTGATCAGCCTGCACACAGTGGAGCTTCG  
GGGAACCAGCTGGAAGCACCCCTGGGAATCAATCTTCTAAGCTGAAGAACCCTACCTGGCCAAAAC  
ATGCTGAAGAAGGTGGAAGGCTTGAGGATCTGAGCAATCTCACACCTTGCATCTTCGAGACAACCAGA  
TTGACACCCTGAGTGGCTTCTCCAGAGAAATGAAATCATTGAGTACCTCAACCTGAGGGGCAACATGTT  
GGCCAACCTGGGGAGCTGGCCAAGCTTCGAGACCTGCCAAGCTGCGAGCGTTGGTGTCTTGTGATAAC  
CCATGCACGGACGAAACCAGCTACCGCCAGGAGGCCCTGGTGCAGATGCCATACCTTGAACGCTGGACA  
AGGAATTCTATGAGGAGGAGGAACGGGCTGAGGCTGATGTGATTTCGACAGAGGCTGAAGGAAGAAAAGGA  
GCAGGAGCTGAGCCCCAGCGTGACCTGGAACCCGAACAGTCATTGATC

**ACGGT**ACGGGCCGCTCGAGCAGAAACTCATCTCAGAAGAGGATCTGGCAGCAATGATATCCTGGATT  
ACAAGGATGACGACGATAAGGTTTAA



[View online »](#)

Protein Sequence: >RC225510 protein sequence  
 Red=Cloning site Green=Tags(s)

MSDEDDLEDSEPDQDDSEKEEDEKETEEGEDYRKEGEEFPEEWLPTPLTEDMMKEGLSLLCKTGNGLAHA  
 YVKLEVKERDLTDIYLLRSYIHLRYVDISENHLTDL SPLNYLTHLLWLKADGNLLRSAQMNELPYLQIAS  
 FAYNQITDTEGISHPRLETLNLKGNISIHMTGLDPEKLSLHTVELRGNQLESTLGINLPKLNLYLAQN  
 MLKKVEGLEDLNLTTLHLRDNQIDTSLSGFSREMKSLQYLNLRGNMVANL GELAKLRDLPKLRALVLLDN  
 PCTDETSYRQEALVQMPYLERLDKEFYEEEEAEADVIRQRLKEEKEQEPEPQRDLEPEQSLI

TRTRPLEQKLISEEDLAANDILDYKDDDDKV

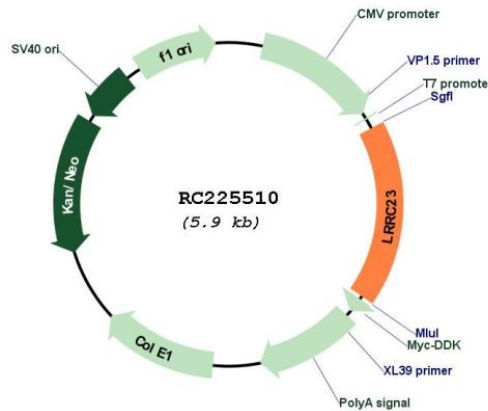
Chromatograms: [https://cdn.origene.com/chromatograms/mk6330\\_h09.zip](https://cdn.origene.com/chromatograms/mk6330_h09.zip)

Restriction Sites: SgfI-MluI

Cloning Scheme:

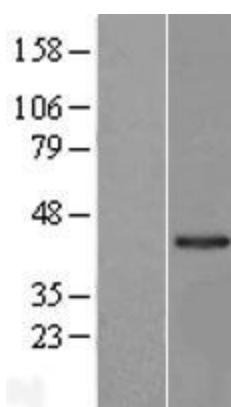


Plasmid Map:



ACCN: NM\_001135217

ORF Size:	1029 bp
OTI Disclaimer:	The molecular sequence of this clone aligns with the gene accession number as a point of reference only. However, individual transcript sequences of the same gene can differ through naturally occurring variations (e.g. polymorphisms), each with its own valid existence. This clone is substantially in agreement with the reference, but a complete review of all prevailing variants is recommended prior to use. <a href="#">More info</a>
OTI Annotation:	This clone was engineered to express the complete ORF with an expression tag. Expression varies depending on the nature of the gene.
RefSeq:	<a href="#">NM_001135217.1</a> , <a href="#">NP_001128689.1</a>
RefSeq Size:	1822 bp
RefSeq ORF:	1032 bp
Locus ID:	10233
UniProt ID:	<a href="#">Q53EV4</a> , <a href="#">A8K8K2</a>
MW:	39.7 kDa

**Product images:**

Western blot validation of overexpression lysate (Cat# [LY427598]) using anti-DDK antibody (Cat# [TA50011-100]). Left: Cell lysates from untransfected HEK293T cells; Right: Cell lysates from HEK293T cells transfected with RC225510 using transfection reagent MegaTran 2.0 (Cat# [TT210002]).