

Product datasheet for RC225509

TRIM17 (NM_001134855) Human Tagged ORF Clone

Product data:

Product Type:	Expression Plasmids
Product Name:	TRIM17 (NM_001134855) Human Tagged ORF Clone
Tag:	Myc-DDK
Symbol:	TRIM17
Synonyms:	RBCC; RNF16; terf
Mammalian Cell Selection:	Neomycin
Vector:	pCMV6-Entry (PS100001)
E. coli Selection:	Kanamycin (25 ug/mL)
ORF Nucleotide Sequence:	>RC225509 representing NM_001134855 Red=Cloning site Blue=ORF Green=Tags(s)

TTTTGTAATACGACTCACTATAGGGCGGCCGGAATTCGTCGACTGGATCCGGTACCGAGGAGATCTGCC
GCC**CGATCGCC**

ATGGAGGCTGTGGAACCGCCAGAAAACGCAGGAGGAAGCTACGTGCTCCATCTGTCTGGATTACTTCA
CAGACCTGTGATGACCACCTGTGGCCACAACCTCTGCCGAGCCTGCATCCAGCTGAGCTGGGAAAAGGC
GAGGGCAAGAAGGGGAGGCGGAAGCGGAAGGGCTCCTCCCTGCCCGAGTGCAGAGAGATGTCCCG
CAGAGAACCTGCTGCCAACCGGCTGCTGACCAAGGTGGCCGAGATGGCGCAGCAGCATCTGGTCTGC
AGAAGCAAGACCTGTGCCAGGAGCACACGAGCCCTCAAGCTTTCTGCCAGAAGGACCAGAGCCCAT
CTGTGTGGTGTGCAGGGAGTCCCGGAGCACCGGCTGCACAGGGTGTGCCCGCCGAGGAGGCAGTGCAG
GGGTACAAGTTGAAGCTGGAGGAGGACATGGAGTACCTTCGGGAGCAGATCACAGGACAGGGAATCTGC
AGGCCAGGGAGGAGCAGAGCTTAGCCGAGTGGCAGGGCAAGGTGAAGGAGCGGAGAGAACGCATTGTCT
GGAGTTTGAGAAGATGAACCTCTACCTGGTGAAGAAGAGCAGAGGCTCCTCCAGGCTCTGGAGACGGAA
GAAGAGGAGACTGCCAGCAGGCTCCGGGAGAGCGTGGCTGCCTGGACCGGACAGGTCACCTCTGGAGC
TGCTGCTGCTGCAGCTGGAGGAGCGGAGCACACAGGGGCCCTCCAGATGCTGCAGGACATGAAGGAACC
CCTGAGCAGGAAGAACAACGTGAGTGTGACGTGCCAGAGGTTGCCCCCAACCCAGACCCAGGACTGTG
TGCAGAGTCCCGGACAGATTGAAGTGCTAAGAGGCTTTCTAGGTAAGTGGGCACCCAGGGCCAGGACCT
CTGACCCAGGATCTCTTGCGATGCCCACTGTACCCCTAGCCTCGGAAGCCACCAATGGGGGGGTTCT
TACAAGTGCACCTGCCTGGTGACGGTCACTGGCTATTCACTGTGCCTTCG

ACGCGTACGCGGCCGCTCGAGCAGAAAACATCTCAGAAGAGGATCTGGCAGCAATGATATCCTGGATT
ACAAGGATGACGACGATAAGGTTTAA



[View online »](#)

Protein Sequence: >RC225509 representing NM_001134855
Red=Cloning site Green=Tags(s)

MEAVELARKLQEEATCSICLDYFTDPVMTTCGHNFCRACIQLSWEKARGKKGRRKRKGSFPCPECREMSP
 QRNLLPNRLLTKVAEMAQQHPGLQKQDLQEHHEPLKLCQKQDQSPICVVCRESREHRLHRVLPAAEEAVQ
 GYKLEEDMEYLREQITRTGNLQAREEQSLAEWQGVKERRERIVLEFEKMNLYLVEEQRLQLALETE
 EEETASRLRESVAACLDROGHSLELLLLLQLEERSTQGPLQMLQDMKEPLSRKNNVSVQCPEVAPTRPRTV
 CRVPGQIEVLRGFLGKWAPRARTSDPGSLGDAPLYPLASEATNGGGSALPGDGHWLFVPS

TRTRPLEQKLISEEDLAANDILDYKDDDDKV

Chromatograms: https://cdn.origene.com/chromatograms/mk8053_f02.zip

Restriction Sites: SgfI-MluI

Cloning Scheme:

Cloning sites used for ORF Shutting:



* The last codon before the Stop codon of the ORF

ACCN: NM_001134855

ORF Size: 1029 bp

OTI Disclaimer: The molecular sequence of this clone aligns with the gene accession number as a point of reference only. However, individual transcript sequences of the same gene can differ through naturally occurring variations (e.g. polymorphisms), each with its own valid existence. This clone is substantially in agreement with the reference, but a complete review of all prevailing variants is recommended prior to use. [More info](#)

OTI Annotation: This clone was engineered to express the complete ORF with an expression tag. Expression varies depending on the nature of the gene.

Components: The ORF clone is ion-exchange column purified and shipped in a 2D barcoded Matrix tube containing 10ug of transfection-ready, dried plasmid DNA (reconstitute with 100 ul of water).

Reconstitution Method:

1. Centrifuge at 5,000xg for 5min.
2. Carefully open the tube and add 100ul of sterile water to dissolve the DNA.
3. Close the tube and incubate for 10 minutes at room temperature.
4. Briefly vortex the tube and then do a quick spin (less than 5000xg) to concentrate the liquid at the bottom.
5. Store the suspended plasmid at -20°C. The DNA is stable for at least one year from date of shipping when stored at -20°C.

RefSeq: [NM_001134855.1](#), [NP_001128327.1](#)

RefSeq ORF: 1032 bp

Locus ID: 51127

UniProt ID: [Q9Y577](#)

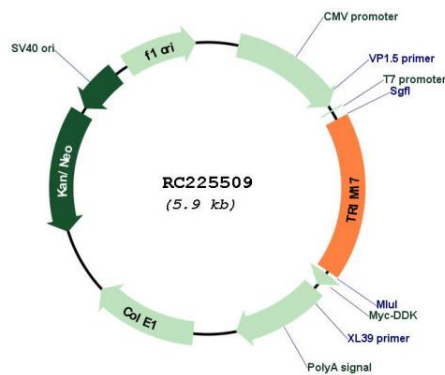
Cytogenetics: 1q42.13

Protein Families: Druggable Genome

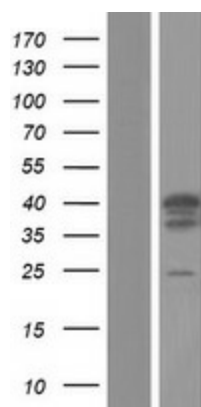
MW: 39 kDa

Gene Summary: The protein encoded by this gene is a member of the tripartite motif (TRIM) family. The TRIM motif includes three zinc-binding domains, a RING, a B-box type 1 and a B-box type 2, and a coiled-coil region. The protein localizes to cytoplasmic bodies. The protein is expressed almost exclusively in the testis, but its function is unknown. Multiple alternatively spliced transcript variants have been found for this gene. [provided by RefSeq, Jul 2008]

Product images:



Circular map for RC225509



Western blot validation of overexpression lysate (Cat# [LY427505]) using anti-DDK antibody (Cat# [TA50011-100]). Left: Cell lysates from untransfected HEK293T cells; Right: Cell lysates from HEK293T cells transfected with RC225509 using transfection reagent MegaTran 2.0 (Cat# [TT210002]).